

SEP 18 1995

KENT COUNTY REMONUMENTATION

COMMISSION

LAND CORNER RECORDATION CERTIFICATE

Filing Requirement of Act 74, Mich. P.A. 1970

For corners in  
KENT COUNTY  
(County)

Located In:

Corner Code #

- |                                      |   |           |   |            |            |
|--------------------------------------|---|-----------|---|------------|------------|
| 1. Public Land Survey                | T | <u>8N</u> | R | <u>12W</u> | <u>C-5</u> |
|                                      | T | _____     | R | _____      | _____      |
|                                      | T | _____     | R | _____      | _____      |
|                                      | T | _____     | R | _____      | _____      |
| 2. Property Controlling in Section   | S | _____     | T | _____      | _____      |
|                                      | S | _____     | T | _____      | _____      |
| 3. Miscellaneous Property in Section | S | _____     | T | _____      | _____      |
|                                      | S | _____     | T | _____      | _____      |

4. Lot No. \_\_\_\_\_, Recorded Plat \_\_\_\_\_
5. Private Claims \_\_\_\_\_

STATE OF MICHIGAN  
COUNTY OF KENT  
RECEIVED FOR RECORD

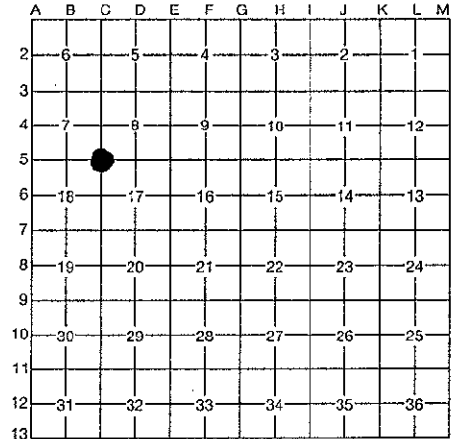
95 AUG 29 AM 10:39

REG. OF DEEDS  
8689

Register of Deeds Stamp & File Number

I, Kirk Breitels, in a field survey on Aug. 1, 1995,

do hereby certify that under requirements of P.A. 74, Michigan P.A. of 1970, the corner points mentioned in lines 1 and 2 above were in conformance with regulations and rules therefore as required in the current manual of survey instructions of the United States Department of the Interior, Bureau of Land Management or by a decree of a Court of Law and/or that the corner points mentioned in lines 3, 4 and 5 above were in conformance with the rules of the Michigan Board of Professional Surveyors or by a Decree of a Court of Law; established, re-established, monumented, re-monumented, recovered, found as expressed below:



NOTE: Not more than 4 corners, all in the same town and range, may be recorded on this certificate.

A. Description of original monument and accessories and/or subsequent restoration:

- |     |         |                  |          |                          |
|-----|---------|------------------|----------|--------------------------|
| C-5 | 1838    | GLO              | Whitcomb | Set Post                 |
|     | 1905    | Williams & Works |          | Leaded Stone             |
|     | 1939    | Kent Co. Wit.    |          | Conc. Monument           |
|     | 1947-62 | Williams & Works |          | Conc. Monument           |
|     | 1986    | LCRC #4411       | Bueche   | Set Kent County Monument |

The position of this corner was previously approved by the Kent County Remonumentation Peer Group, monumented by John C. Bueche on 4/14/86 and was recorded per LCRC #4411

B. Description of corner evidence found and/or method applied in restoring or reestablishing corner:

C-5 Found standard Kent Co. Mon. (Harrison) per witnesses from above LCRC as set by John C. Bueche in place of the Conc. Mon. he found inside a mon. box. Said Conc. Monument checks with Kent Co. Wit. and Williams & Works information.

LCRC #4411

- |  |       |        |
|--|-------|--------|
| Nail & KC Remon. tag E. side 24" Maple | N35°E | 68.00' |
| Nail & KC Remon. tag NW side 26" Maple | N55°E | 48.05' |
| Nail & KC Remon. tag S. side P. Pole   | S50°E | 84.33' |
| Nail & KC Remon. tag SE side P. Pole   | S45°W | 64.78' |
| Nail & KC Remon. tag top of fence post | N45°W | 53.72' |

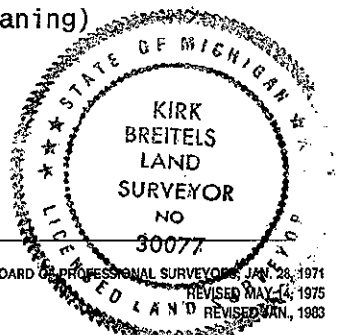
P.A. 345 1990 KENT COUNTY  
PEER APPROVED 8/24/95  
CHAIRMAN [Signature]

The selected location is accepted by me and is generally accepted by professional surveyors as the best available evidence of the position of the original corner.

C. Description of monument for corner and accessories established to perpetuate locating the position of the corner:

C-5 Standard Kent County Monument

- |  |       |                       |
|--|-------|-----------------------|
| New Nail & KC Remon. tag E. side 27" Maple | N35°E | 67.98'                |
| New Nail & KC Remon. tag NW side 30" Maple | N55°E | 48.05'                |
| Nail & KC Remon. tag S. side P. Pole       | S50°E | 84.33'                |
| Nail & KC Remon. tag SE side P. Pole       | S45°W | 64.67'                |
| Nail & KC Remon. tag top of fence post     | N45°W | 54.03' (post leaning) |



Signed by

[Signature]

Date

8/24/95

Surveyor's Michigan License No.

30077