

SEP 18 1995

COMMISSION

KENT COUNTY REMONUMENTATION

LAND CORNER RECORDATION CERTIFICATE  
Filing Requirement of Act 74, Mich. P.A. 1970

For corners in  
KENT COUNTY

	Located In:	Corner Code #
	(County)	
1. Public Land Survey	T <u>8N</u> R <u>12W</u>	D-7
	T _____ R _____	_____
	T _____ R _____	_____
	T _____ R _____	_____
2. Property Controlling in Section	S _____ T _____ R _____	_____
	S _____ T _____ R _____	_____
3. Miscellaneous Property in Sec.	S _____ T _____ R _____	_____
	S _____ T _____ R _____	_____
4. Lot No. _____, Recorded Plat _____		
5. Private Claims _____		

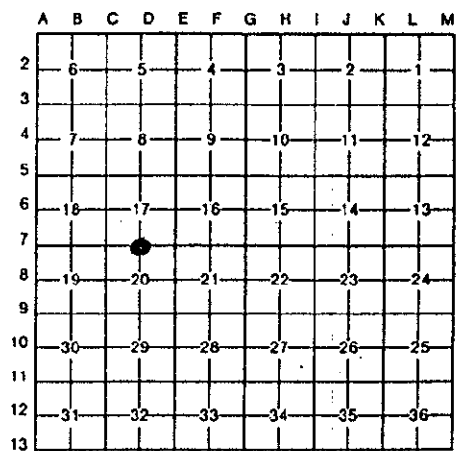
STATE OF MICHIGAN  
COUNTY OF KENT  
RECEIVED FOR RECORD

95 JUN 29 AM 11:52

REG. OF DEEDS  
*Luigi Bond*  
8440

Register of Deeds Stamp & File Number

I, Kirk Breitels, in a field survey on March 8, 1995, do hereby certify that under requirements of P.A. 74, Michigan P.A. of 1970, the corner points mentioned in lines 1 and 2 above were in conformance with regulations and rules therefore as required in the current manual of survey instructions of the United States Department of the Interior, Bureau of Land Management or by a decree of a Court of Law and/or that the corner points mentioned in lines 3, 4 and 5 above were in conformance with the rules of the Michigan Board of Land Surveyors or by a Decree of a Court of Law; established, re-established, monumented, re-monumented, recovered, found as expressed below:



NOTE: Not more than 4 corners, all in the same town and range, may be recorded on this certificate.

A. Description of original monument and accessories and/or subsequent restoration:

D-7	1838	GLO	Whitcomb	Set Post
	1935	Kent Co. Wit.		Conc. Mon.
	1974	Kent Co. Wit.		Mon. Box
	1977	LCRC #1229	By1	1/2" Iron in mon. box
	1981	LCRC #2400	Bueche	Set Kent County Monument in mon. box

The position of this corner was previously approved by the Kent County Remonumentation Peer Group, monumented by John C. Bueche on 11/11/81 and was recorded per LCRC #2400.

B. Description of corner evidence found and/or method applied in restoring or reestablishing corner:

D-7 Found standard Kent Co. Mon. (Harrison) per witnesses from above LCRC as set by John C. Bueche in place of the 1" Iron he found inside a mon. box. Said Iron checks with Kent Co. Wit. and LCRC #1229.

LCRC #2400

KC Remon. tag & nail top of guard rail	N75°W	98.98'
KC Remon. tag & nail in blacktop curb	N45°W	33.17'
KC Remon. tag & nail in blacktop curb	N05°E	20.67'
KC Remon. tag & nail in blacktop curb	N65°E	44.50'
KC Remon. tag & nail top of guard rail	N80°E	81.13'
C/L 8" Maple (no tag or nail)	S45°E	105.74'

STATE OF MICHIGAN  
KENT COUNTY  
PEER APPROVED 6/22/95  
CHAIRMAN *Harry Huber*

West line of hse (N. side of road) is East 92' m/l; on C/L blacktop E-W

The selected location is accepted by me and is generally accepted by professional surveyors as the best available evidence of the position of the original corner.

C. Description of monument for corner and accessories established to perpetuate locating the position of the corner:

D-7 Standard Kent County Monument

KC Remon. tag & nail top of guard rail post	N75°W	98.98'
New KC Remon. tag & PK nail in blacktop curb	N65°E	44.50'
KC Remon. tag & nail top of guard rail post	N80°E	81.18'
Set KC Remon. tag & nail top of guard rail post	N40°W	30.68'
Set KC Remon. tag & nail W. side guard rail post	N10°E	21.91'
Set KC Remon. tag & nail E. side Power Pole	S00°E	62.32'
C/L 12" Maple (no tag or nail)	S45°E	105.7'



West line of hse (N. side of road) is East 92' m/l; on C/L blacktop E-W

Signed by *Kirk Breitels*  
30077

Date 6/22/95

Surveyor's Michigan License No. \_\_\_\_\_