

SURVEY &
 REMONUMENTATION
 SEP 18 1995
 COMMISSION

KENT COUNTY REMONUMENTATION

LAND CORNER RECORDATION CERTIFICATE
 Filing Requirement of Act 74, Mich. P.A. 1970

For corners in
KENT COUNTY
 (County)

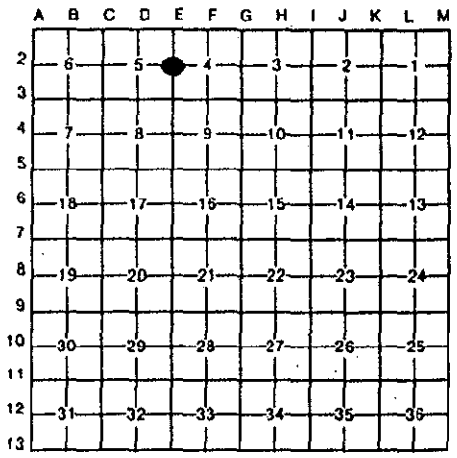
	Located In:	Corner Code #
1. Public Land Survey	T <u>8N</u> R <u>12W</u>	E-2
	T _____ R _____	_____
	T _____ R _____	_____
	T _____ R _____	_____
2. Property Controlling in Section	S _____ T _____ R _____	_____
	S _____ T _____ R _____	_____
3. Miscellaneous Property in Sec.	S _____ T _____ R _____	_____
	S _____ T _____ R _____	_____
4. Lot No. _____, Recorded Plat _____		
5. Private Claims _____		

STATE OF MICHIGAN
 COUNTY OF KENT
 RECEIVED FOR RECORD
 95 JUN 29 AM 11:52
 REG. OF DEEDS
Lucy Sand
 8443
 Register of Deeds Stamp & File Number

I, Kirk Breitels, in a field survey on Feb. 15, 1995

do hereby certify that under requirements of P.A. 74, Michigan P.A. of 1970, the corner points mentioned in lines 1 and 2 above were in conformance with regulations and rules therefore as required in the current manual of survey instructions of the United States Department of the Interior, Bureau of Land Management or by a decree of a Court of Law and/or that the corner points mentioned in lines 3, 4 and 5 above were in conformance with the rules of the Michigan Board of Land Surveyors or by a Decree of a Court of Law; established, re-established, monumented, re-monumented, recovered, found as expressed below:

NOTE: Not more than 4 corners, all in the same town and range, may be recorded on this certificate.



A. Description of original monument and accessories and/or subsequent restoration:

E-2	1838	GLO	Whitcomb	Set Post
	1899	Williams & Works		Plow Point
	1935	Kent Co. Wit.		Conc. Mon.
	1969	Williams & Works		Iron
	1985	LCRC #4328	Bueche	Set Kent County Monument

The position of this corner was previously approved by the Kent County Remonumentation Peer Group, monumented by John C. Bueche on 11/29/85 and was recorded per LCRC #4328

B. Description of corner evidence found and/or method applied in restoring or reestablishing corner:

E-2 Found standard Kent Co. Mon. (Harrison) per witnesses from above LCRC as set by John c. Bueche in place of the "T" Iron he found over a Conc. Mon. Said Iron over Conc. Mon. checks with Kent Co. Wit. and Williams & Works information.

LCRC #4328

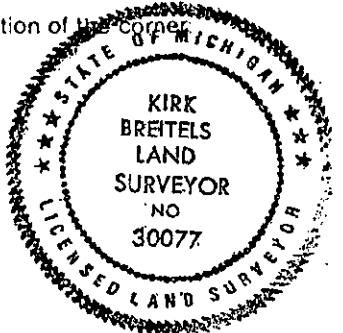
KC Remon. tag & nail in West headwall	S15°W	95.61'	P.A. 345 1980 KENT COUNTY PEER APPROVED 6/22/95 CHAIRMAN <i>Harry Huber</i>
KC Remon. tag & nail in East headwall	S15°E	75.41'	
KC Remon. tag & nail West side 8" Tree	N20°E	84.41'	
KC Remon. tag & nail E. side P. Pole	N20°W	137.86'	

The selected location is accepted by me and is generally accepted by professional surveyors as the best available evidence of the position of the original corner.

C. Description of monument for corner and accessories established to perpetuate locating the position of the corner:

E-2 Standard Kent County Monument

KC Remon. tag & nail in West headwall	S15°W	95.61'
KC Remon. tag & nail in East headwall	S15°E	75.41'
New KC Remon. tag & nail West side 12" Tree	N20°E	84.43'
New KC Remon. tag & nail E. side P. Pole	N20°W	137.90'



Signed by *Kirk Breitels* Date 6/22/95
 Surveyor's Michigan License No. 30077