

\$7.00
\$2.00
HELP 1 & 1985

COMMISSION

KENT COUNTY REMONUMENTATION

LAND CORNER RECORDATION CERTIFICATE
Filing Requirement of Act 74, Mich. P.A. 1970

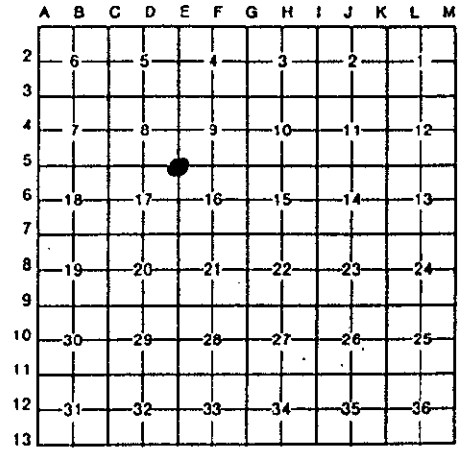
For corners in
KENT COUNTY

(County)	Located In:	Corner Code #
1. Public Land Survey	T <u>8N</u> R <u>12W</u>	<u>E-5</u>
	T _____ R _____	_____
	T _____ R _____	_____
	T _____ R _____	_____
2. Property Controlling in Section	S _____ T _____ R _____	_____
	S _____ T _____ R _____	_____
3. Miscellaneous Property in Sec.	S _____ T _____ R _____	_____
	S _____ T _____ R _____	_____

STATE OF MICHIGAN
COUNTY OF KENT
RECEIVED FOR RECORD
95 JUN 29 AM 11:52
REG. OF DEEDS
Lucy Stand
8446
Register of Deeds Stamp & File Number

4. Lot No. _____, Recorded Plat _____
5. Private Claims _____

I, Kirk Breitels, in a field survey on Feb. 15, 1995, do hereby certify that under requirements of P.A. 74, Michigan P.A. of 1970, the corner points mentioned in lines 1 and 2 above were in conformance with regulations and rules therefore as required in the current manual of survey instructions of the United States Department of the Interior, Bureau of Land Management or by a decree of a Court of Law and/or that the corner points mentioned in lines 3, 4 and 5 above were in conformance with the rules of the Michigan Board of Land Surveyors or by a Decree of a Court of Law; established, re-established, monumented, re-monumented, recovered, found as expressed below:



NOTE: Not more than 4 corners, all in the same town and range, may be recorded on this certificate.

A. Description of original monument and accessories and/or subsequent restoration:

E-5	1838	GLO	Whitcomb	Set Post
	1935	Kent Co. Wit.		Leaded Stone & Iron
	1977	LCRC #1089	VanKooten	1" Iron
	1981	LCRC #2404	Bueche	Set Kent County Monument

The position of this corner was previously approved by the Kent County Remonumentation Peer Group, monumented by John C. Bueche on 11/9/81 and was recorded per LCRC #2404.

B. Description of corner evidence found and/or method applied in restoring or reestablishing corner:

E-5 Found standard Kent Co. Mon. (Harrison) per witnesses from above LCRC as set by John C. Bueche in place of the 3/4" x 12" over a 1" x 16" Iron he found. Both Irons check with Kent Co. Wit. and LCRC #1089.

LCRC #2404

SW corner house foundation	N48°E	46.42'	P.A. 345 1990 KENT COUNTY
SE corner house foundation	N60°E	59.45'	PEER APPROVED 6/22/95
KC Remon. tag & nail NE side 40" Maple	S20°E	74.72'	CHAIRMAN <i>Harvey Hub</i>
KC Remon. tag & nail W. side 24" Catalpa	N30°W	63.12'	
KC Remon. tag & nail top of fence post (old PP)	S48°E	55.59'	
"X" cut West end conc. culv.	S20°W	59.42'	

On C/L blktp. E-W; C/L blktp. N-S is West 4.5' m/1

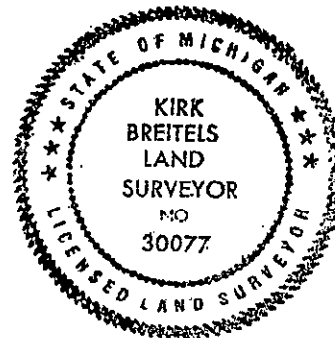
The selected location is accepted by me and is generally accepted by professional surveyors as the best available evidence of the position of the original corner.

C. Description of monument for corner and accessories established to perpetuate locating the position of the corner:

E-5 Standard Kent County Monument

New KC Remon. tag & nail W. side 36" Catalpa	N30°W	63.19'
KC Remon. tag & nail top of fence post (old PP)	S48°E	55.66'
Set KC Remon. tag & nail S. side 14" Maple	N75°E	97.53'
"X" cut South end conc. culv.	S70°W	43.22'
"X" cut West end conc. culv.	S20°W	59.42'

On C/L blktp. E-W; C/L blktp. N-S is West 4.5' m/1



Signed by *Kirk Breitels*

Date 6/22/95

Surveyor's Michigan License No. 30077