

\$7.00
 \$2.00 SEP 18 1995
 COMMISSION

KENT COUNTY REMONUMENTATION

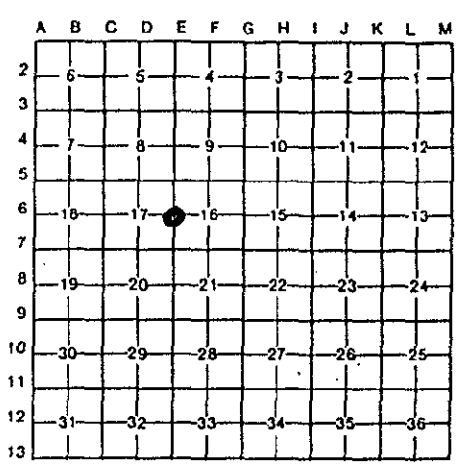
LAND CORNER RECORDATION CERTIFICATE
 Filing Requirement of Act 74, Mich. P.A. 1970

For corners in
KENT COUNTY
(County)

Located In:	Corner Code #
T 8N R 12W	E-6
T R	
T R	
T R	
S T R	
S T R	
S T R	
S T R	

STATE OF MICHIGAN
 COUNTY OF KENT
 RECEIVED FOR RECORD
 95 JUN 29 AM 11:52
 REG. OF DEEDS
Lucy St. Bond
 8447
 Register of Deeds Stamp & File Number

4. Lot No. _____, Recorded Plat _____
 5. Private Claims _____



I, Kirk Breitels, in a field survey on May 12, 19 95,
 do hereby certify that under requirements of P.A. 74, Michigan P.A. of 1970, the corner points mentioned
 in lines 1 and 2 above were in conformance with regulations and rules therefore as required in the
 current manual of survey instructions of the United States Department of the Interior, Bureau of Land
 Management or by a decree of a Court of Law and/or that the corner points mentioned in lines 3, 4 and 5
 above were in conformance with the rules of the Michigan Board of Land Surveyors or by a Decree of a
 Court of Law; established, re-established, monumented, re-monumented, recovered, found as
 expressed below:

NOTE: Not more than 4 corners, all in the same town and range, may be recorded on this certificate.

A. Description of original monument and accessories and/or subsequent restoration:

E-6	1838	GLO	Whitcomb	Set Post
	1935	Kent Co. Wit.		"X" on stone
	1977	LCRC #1228	Byl	"T" Iron
	1981	LCRC #2405	Bueche	Set Kent County Monument

The position of this corner was previously approved by the Kent County Remonumentation Peer Group, monumented by John C. Bueche on 11/31/81 and was recorded per LCRC #2405.

B. Description of corner evidence found and/or method applied in restoring or reestablishing corner:

E-6 Found standard Kent Co. Mon. (Harrison) per witnesses from above LCRC as set by John C. Bueche in place of the "T" Iron he found. Said "T" Iron checks with LCRC #1228 and previous survey data by others.

LCRC #2405

KC Remon. tag & nail S. side 18" Apple	S70°E	69.92'
KC Remon. tag & nail S. side 14" Apple	S50°E	87.34'
KC Remon. tag & nail W. side 8" Apple	S25°E	99.38'
"X" cut S. end conc. culv.	N10°E	128.73'
C/L blktp. N-S is West 1' m/l		
N. line hse. #6364 is South 240' m/l		

P.A. 345 1990 KENT COUNTY
 PEER APPROVED 6/22/95
 CHAIRMAN *Harry Huber*

The selected location is accepted by me and is generally accepted by professional surveyors as the best available evidence of the position of the original corner.

C. Description of monument for corner and accessories established to perpetuate locating the position of the corner:

E-6 Standard Kent County Monument

New "X" cut S. end conc. culv.	N10°E	128.90'
NW cor. steel farm bldg.	S55°E	262.0'
NW cor. conc. porch slab	S20°E	280.24'
Set Capped Iron near NE corner of orchard	S55°W	324.64'
Set Capped Iron in C/L field drive (60' W. of road) on C/L blktp. N-S m/l	N10°W	329.25'



Signed by *Kirk Breitels* Date 6/22/95

Surveyor's Michigan License No. 30077