

\$7.00
\$2.00
SEP 18 1995

COMMISSION

KENT COUNTY REMONUMENTATION

LAND CORNER RECORDATION CERTIFICATE
Filing Requirement of Act 74, Mich. P.A. 1970

For corners in
KENT COUNTY
(County)

Located In:

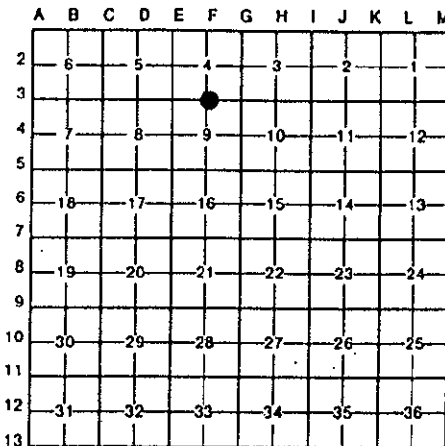
Corner Code ##

1. Public Land Survey	T	8N	R	12W	F-3
	T		R		
	T		R		
	T		R		
2. Property Controlling in Section	S		T	R	
	S		T	R	
3. Miscellaneous Property in Sec.	S		T	R	
	S		T	R	

STATE OF MICHIGAN
COUNTY OF KENT
RECEIVED FOR RECORD
95 JUN 29 AM 11:53
REG. OF DEEDS
84555

Register of Deeds Stamp & File Number

4. Lot No. _____, Recorded Plat _____
5. Private Claims _____



I, Kirk Breitels, in a field survey on Feb. 15, 19 95

do hereby certify that under requirements of P.A. 74, Michigan P.A. of 1970, the corner points mentioned in lines 1 and 2 above were in conformance with regulations and rules therefore as required in the current manual of survey instructions of the United States Department of the Interior, Bureau of Land Management or by a decree of a Court of Law and/or that the corner points mentioned in lines 3, 4 and 5 above were in conformance with the rules of the Michigan Board of Land Surveyors or by a Decree of a Court of Law; established, re-established, monumented, re-monumented, recovered, found as expressed below:

NOTE: Not more than 4 corners, all in the same town and range, may be recorded on this certificate.

A. Description of original monument and accessories and/or subsequent restoration:

F-3	1838	GLO	Whitcomb	Set Post
	1935	Kent Co. Wit.		Iron in wood stake
	1969	Williams & Works		Iron
	1985	LCRC #4331	Bueche	Set Kent County Monument

The position of this corner was previously approved by the Kent County Remonumentation Peer Group, monumented by John C. Bueche on 10/17/85 and was recorded per LCRC #4331.

B. Description of corner evidence found and/or method applied in restoring or reestablishing corner:

F-3 Found standard Kent Co. Mon. (Harrison) per witnesses from above LCRC as set by John C. Bueche in place of the Boat Spike over 3/4" x 24" Iron he found. Boat Spike and Iron check with Kent Co. Wit. and Williams & Works information.

LCRC #4331

Centerline blacktop	S. 2.0'			
"X" cut E. side SE leg of electrical tower		N05°W	37.86'	
KC Remon. tag & nail E. side 12" Apple		S27°W	59.82'	
KC Remon. tag & nail W. side 14" Apple		S50°W	80.81'	
"X" cut S. side SW leg of electrical tower		N30°W	42.46'	

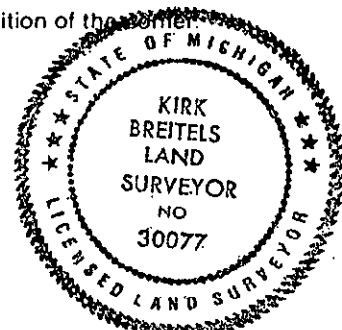
P.A. 345 1990 KENT COUNTY

PEER APPROVED 6/22/95
CHAIRMAN Harry Huber

The selected location is accepted by me and is generally accepted by professional surveyors as the best available evidence of the position of the original corner.

C. Description of monument for corner and accessories established to perpetuate locating the position of the corner:

F-3 Standard Kent County Monument				
Centerline blacktop	S. 2.0'			
"X" cut E. side SE leg of electrical tower		N05°W	37.88'	
"X" cut S. side SW leg of electrical tower		N30°W	42.43'	
Set Nail & KC Remon. tag W. side P. Pole		S15°E	53.64'	
Set Nail & KC Remon. tag N. side P. Pole		S60°W	93.18'	



Signed by Kirk Breitels

Date 6/22/95

Surveyor's Michigan License No. 30077