

\$1.00
\$2.00

SEP 18 1995

COMMISSION

KENT COUNTY REMONUMENTATION

LAND CORNER RECORDATION CERTIFICATE
Filing Requirement of Act 74, Mich. P.A. 1970

For corners in
KENT COUNTY

(County)	Located In:	Corner Code #
1. Public Land Survey	T <u>8N</u> R <u>12W</u>	<u>F-5</u>
	T _____ R _____	_____
	T _____ R _____	_____
	T _____ R _____	_____
2. Property Controlling in Section	S _____ T _____ R _____	_____
	S _____ T _____ R _____	_____
3. Miscellaneous Property in Sec.	S _____ T _____ R _____	_____
	S _____ T _____ R _____	_____

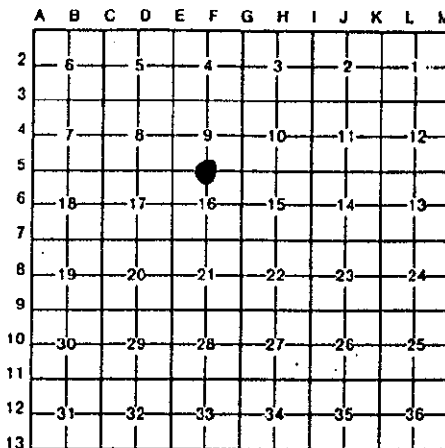
STATE OF MICHIGAN
COUNTY OF KENT
RECEIVED FOR RECORD

95 JUN 29 AM 11:53

REG. OF DEEDS
456

Register of Deeds Stamp & File Number

4. Lot No. _____, Recorded Plat _____
5. Private Claims _____



I, Kirk Breitels, in a field survey on March 2, 19 95, do hereby certify that under requirements of P.A. 74, Michigan P.A. of 1970, the corner points mentioned in lines 1 and 2 above were in conformance with regulations and rules therefore as required in the current manual of survey instructions of the United States Department of the Interior, Bureau of Land Management or by a decree of a Court of Law and/or that the corner points mentioned in lines 3, 4 and 5 above were in conformance with the rules of the Michigan Board of Land Surveyors or by a Decree of a Court of Law; established, re-established, monumented, re-monumented, recovered, found as expressed below:

NOTE: Not more than 4 corners, all in the same town and range, may be recorded on this certificate.

A. Description of original monument and accessories and/or subsequent restoration:

F-5	1838	GLO	Whitcomb	Set Post
	1935	Kent Co. Wit.		Conc. Mon.
	1977	LCRC #1089	VanKooten	1" Iron top of Conc. Mon.
	1981	LCRC #2408	Bueche	Set Kent County Monument

The position of this corner was previously approved by the Kent County Remonumentation Peer Group, monumented by John C. Bueche on 11/10/81 and was recorded per LCRC #2408.

B. Description of corner evidence found and/or method applied in restoring or reestablishing corner:

F-5 Found standard Kent Co. Mon. (Harrison) per witnesses from above LCRC as set by John C. Bueche in place of the 1" x 17" Iron on top of Conc. Mon. he found. Both check with Kent Co. Wit. & LCRC #1089.

LCRC #2408

KC Remon. tag & nail E. side 6" Apple	N20°W	59.11'
KC Remon. tag & nail S. side 6" Apple	N58°W	116.23'
NW cor. of leg CP tower	S10°W	216.0'
SW cor. leg of CP tower	N05°W	173.01'
C/L 2" Apple (no tag or nail)	S20°E	52.65'
C/L CP line N-S is West 12.8' m/l on C/L blktp. E-W		

P.A. 345 1990 KENT COUNTY

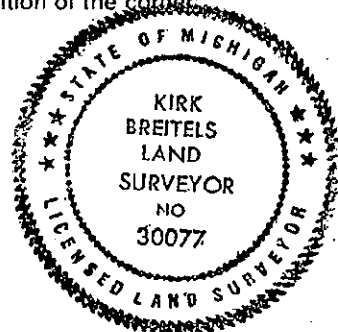
PEER APPROVED 6/22/95
CHAIRMAN Harry Hubert

The selected location is accepted by me and is generally accepted by professional surveyors as the best available evidence of the position of the original corner.

C. Description of monument for corner and accessories established to perpetuate locating the position of the corner:

F-5 Standard Kent County Monument

NW cor. of leg CP tower	S10°W	216.0'
SW cor. leg of CP tower	N05°W	173.0'
Set Nail & KC Remon. tag NE side 10" Apple	S20°E	52.59'
Set Nail & KC Remon. tag S. side 10" Apple	S45°E	87.39'
Set Nail & KC Remon. tag E. side 6" Apple	N25°W	51.60'
Set Nail & KC Remon. tag SW side 6" Apple	N50°W	78.22'
C/L CP line N-S is West 12.8' m/l on C/L blktp. E-W		



Signed by [Signature]

Date 6/22/95

Surveyor's Michigan License No. 30077