

REMONUMENTATION  
 \$7.00  
 \$2.00 SEP 18 1995  
 COMMISSION

KENT COUNTY REMONUMENTATION

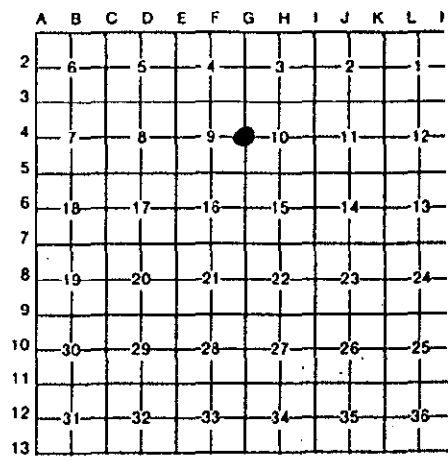
LAND CORNER RECORDATION CERTIFICATE  
 Filing Requirement of Act 74, Mich. P.A. 1970

For corners in  
 KENT COUNTY  
 (County)

Located In:	Corner Code #
T 8N R 12W	G-4
T _____ R _____	_____
T _____ R _____	_____
T _____ R _____	_____
T _____ R _____	_____
S _____ T _____ R _____	_____
S _____ T _____ R _____	_____
S _____ T _____ R _____	_____
S _____ T _____ R _____	_____

STATE OF MICHIGAN  
 COUNTY OF KENT  
 RECEIVED FOR RECORD  
 95 JUN 29 AM 11:54  
 REG. OF DEEDS  
 8464  
 Register of Deeds Stamp & File Number

- 4. Lot No. \_\_\_\_\_, Recorded Plat \_\_\_\_\_
- 5. Private Claims \_\_\_\_\_



I, Kirk Breitels, in a field survey on Feb. 7, 1995, do hereby certify that under requirements of P.A. 74, Michigan P.A. of 1970, the corner points mentioned in lines 1 and 2 above were in conformance with regulations and rules therefore as required in the current manual of survey instructions of the United States Department of the Interior, Bureau of Land Management or by a decree of a Court of Law and/or that the corner points mentioned in lines 3, 4 and 5 above were in conformance with the rules of the Michigan Board of Land Surveyors or by a Decree of a Court of Law; established, re-established, monumented, re-monumented, recovered, found as expressed below:

NOTE: Not more than 4 corners, all in the same town and range, may be recorded on this certificate.

A. Description of original monument and accessories and/or subsequent restoration:

Corner Code	Year	Owner	Monument	Description
G-4	1838	GLO	Whitcomb	Set Post Stake
	1888	Williams & Works	Kent Co. Wit.	2" Iron at fence corner
	1949	Williams & Works		2 1/2" Iron at fence corner
	1986	LCRC #4413	Bueche	Set Kent County Monument

The position of this corner was previously approved by the Kent County Remonumentation Peer Group, monumented by John C. Bueche on 4/14/86 and was recorded per LCRC #4413

B. Description of corner evidence found and/or method applied in restoring or reestablishing corner:

G-4 Found standard Kent Co. Mon. (Harrison) per witnesses from above LCRC as set by John C. Bueche in place of the 2 1/2" Iron he found at a fence corner. Said Iron checks with Kent Co. Wit. and Williams & Works information.

LCRC #4413

KC Remon. tag & nail E. side 48" Maple	N25°E	17.77'
KC Remon. tag & nail SE side 10" Ash	N60°E	20.59'
KC Remon. tag & nail S. side 14" Oak	N85°E	73.98'
KC Remon. tag & nail N. side 18" Beech	S50°E	46.63'
KC Remon. tag & nail E. side 8" Oak	S15°E	62.56'

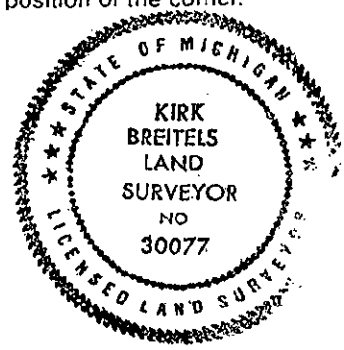
P.A. 345 1990 KENT COUNTY  
 PEER APPROVED 6/22/95  
 CHAIRMAN *[Signature]*

The selected location is accepted by me and is generally accepted by professional surveyors as the best available evidence of the position of the original corner.

C. Description of monument for corner and accessories established to perpetuate locating the position of the corner:

G-4 Standard Kent County Monument

New KC Remon. tag & nail E. side 48" Maple	N25°E	17.74'
KC Remon. tag & nail SE side 10" Ash	N60°E	20.52'
New KC Remon. tag & nail S. side 18" Oak	N85°E	73.83'
New KC Remon. tag & nail N. side 20" Beech	S50°E	46.45'
New KC Remon. tag & nail E. side 10" Oak	S15°E	62.39'



Signed by *Kirk Breitels*  
 Surveyor's Michigan License No. 30077

Date 6/22/95