

\$7.00  
\$2.00

SEP 13 1985

COMMISSION

KENT COUNTY REMONUMENTATION

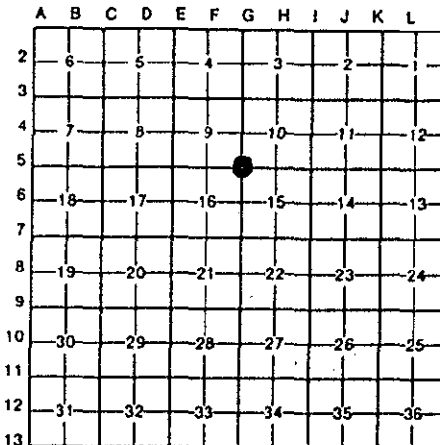
LAND CORNER RECORDATION CERTIFICATE  
Filing Requirement of Act 74, Mich. P.A. 1970

For corners in  
KENT COUNTY

(County)	Located In:	Corner Code #/
1. Public Land Survey	T 8N R 12W	G-5
	T _____ R _____	_____
	T _____ R _____	_____
	T _____ R _____	_____
2. Property Controlling in Section	S _____ T _____ R _____	_____
	S _____ T _____ R _____	_____
3. Miscellaneous Property in Sec.	S _____ T _____ R _____	_____
	S _____ T _____ R _____	_____
4. Lot No. _____, Recorded Plat _____		
5. Private Claims _____		

STATE OF MICHIGAN  
COUNTY OF KENT  
RECEIVED FOR RECORD  
95 JUN 29 AM 11:54  
REG. OF DEEDS  
8465

Register of Deeds Stamp & File Number



I, Kirk Breitels, in a field survey on Feb. 15, 19 95, do hereby certify that under requirements of P.A. 74, Michigan P.A. of 1970, the corner points mentioned in lines 1 and 2 above were in conformance with regulations and rules therefore as required in the current manual of survey instructions of the United States Department of the Interior, Bureau of Land Management or by a decree of a Court of Law and/or that the corner points mentioned in lines 3, 4 and 5 above were in conformance with the rules of the Michigan Board of Land Surveyors or by a Decree of a Court of Law; established, re-established, monumented, re-monumented, recovered, found as expressed below:

NOTE: Not more than 4 corners, all in the same town and range, may be recorded on this certificate.

A. Description of original monument and accessories and/or subsequent restoration:

G-5	1838	GLO	Whitcomb	Set Post
	1935	Kent Co. Wit.		1" Iron over stone
		Williams & Works		"T" Iron over stone
	1983	LCRC #3363	Bueche	Set Kent County Monument

The position of this corner was previously approved by the Kent County Remonumentation Peer Group, monumented by John C. Bueche on 5/10/83 and was recorded per LCRC #3363.

B. Description of corner evidence found and/or method applied in restoring or reestablishing corner:

G-5 Found standard Kent Co. Mon. (Harrison) per witnesses from above LCRC as set by John C. Bueche in place of the "T" iron over a 1" Iron he found over a stone. Both Irons and stone check with Kent Co. Wit. and Williams & Works information.

LCRC #3363

KC Remon. tag & nail S. side Power Pole	N60°W	66.22'
KC Remon. tag & nail SW side Power Pole	N25°W	173.72'
KC Remon. tag & nail NW side Power Pole	S35°W	117.56'
"X" cut E. end conc. culv.	N20°W	21.85'
"X" cut W. end conc. culv.	N85°E	195.40'

P.A. 345 1990 KENT COUNTY  
PEER APPROVED 6/22/95  
CHAIRMAN *Darryl Huber*

C/L blacktop road South is West 0.6' on C/L blacktop road E-W

The selected location is accepted by me and is generally accepted by professional surveyors as the best available evidence of the position of the original corner.

C. Description of monument for corner and accessories established to perpetuate locating the position of the corner:

G-5 Standard Kent County Monument

KC Remon. tag & nail S. side Power Pole	N60°W	66.27'
KC Remon. tag & nail SW side Power Pole	N25°W	173.68'
KC Remon. tag & nail NW side Power Pole	S35°W	117.70'
"X" cut E. end conc. culv.	N20°W	21.92'
"X" cut W. end conc. culv.	N85°E	195.40'

C/L blacktop road South is West 0.6' on C/L blacktop road E-W



Signed by *Kirk Breitels*

Date 6/22/95

Surveyor's Michigan License No. 30077