

KENT COUNTY REMONUMENTATION

\$7.00 SEP 16 1995
\$2.00 COMMISSION

LAND CORNER RECORDATION CERTIFICATE
Filing Requirement of Act 74, Mich. P.A. 1970

For corners in
KENT COUNTY
(County)

Located In:

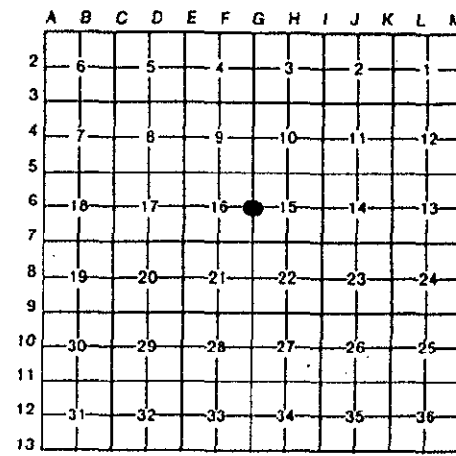
Corner Code #/

- | | | |
|---------------------------------------|--------------------------|-------|
| 1. Public Land Survey | T <u>8N</u> R <u>12W</u> | G-6 |
| | T _____ R _____ | _____ |
| | T _____ R _____ | _____ |
| | T _____ R _____ | _____ |
| 2. Property Controlling in Section | S _____ T _____ R _____ | _____ |
| | S _____ T _____ R _____ | _____ |
| 3. Miscellaneous Property in Sec. | S _____ T _____ R _____ | _____ |
| | S _____ T _____ R _____ | _____ |
| 4. Lot No. _____, Recorded Plat _____ | | |
| 5. Private Claims _____ | | |

STATE OF MICHIGAN
COUNTY OF KENT
RECEIVED FOR RECORD
95 JUN 29 AM 11:51
REG. OF DEEDS
8466

Register of Deeds Stamp & File Number

I, Kirk Breitels, in a field survey on Feb. 15, 19 95, do hereby certify that under requirements of P.A. 74, Michigan P.A. of 1970, the corner points mentioned in lines 1 and 2 above were in conformance with regulations and rules therefore as required in the current manual of survey instructions of the United States Department of the Interior, Bureau of Land Management or by a decree of a Court of Law and/or that the corner points mentioned in lines 3, 4 and 5 above were in conformance with the rules of the Michigan Board of Land Surveyors or by a Decree of a Court of Law; established, re-established, monumented, re-monumented, recovered, found as expressed below:



NOTE: Not more than 4 corners, all in the same town and range, may be recorded on this certificate.

A. Description of original monument and accessories and/or subsequent restoration:

G-6	1838	GLO	Whitcomb	Set Post
	1894	Williams & Works		Gun Barrel
	1935	Kent Co. Wit.		"X" on stone
	1979	Exxel Eng. Co.		1" Iron
	1983	LCRC #3364	Bueche	Set Kent County Monument

The position of this corner was previously approved by the Kent County Remonumentation Peer Group, monumented by John C. Bueche on 5/10/83 and was recorded per LCRC #3364.

B. Description of corner evidence found and/or method applied in restoring or reestablishing corner:

G-6 Found standard Kent Co. Mon. (Harrison) per witnesses from above LCRC as set by John C. Bueche in place of the Boat Spike he found over a stone. Said Boat Spike and stone check with Kent Co. Wit. and Williams & Works information.

LCRC #3364

KC Remon. tag & nail N. side 8" Poplar	N80°E	37.32'
KC Remon. tag & nail S. side 12" Poplar	S75°E	40.85'
KC Remon. tag & nail S. side 18" W. Cherry	S55°E	41.10'
KC Remon. tag & nail SW side 12" Maple	S35°E	52.51'
KC Remon. tag & nail SW side 10" W. Cherry	S20°E	87.18'

on C/L blktp. road; C/L field dr. West is 14' m/l North row of 2" Apple trees W. is 9' m/l South

P.A. 345 1980 KENT COUNTY
PEER APPROVED 6/22/95
CHAIRMAN *Harry Bueche*

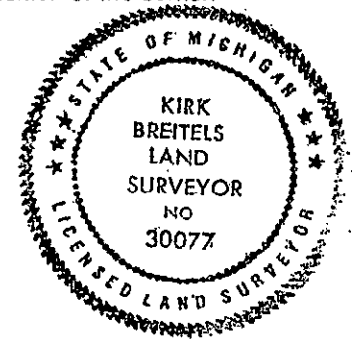
The selected location is accepted by me and is generally accepted by professional surveyors as the best available evidence of the position of the original corner.

C. Description of monument for corner and accessories established to perpetuate locating the position of the corner:

G-6 Standard Kent County Monument

New KC Remon. tag & nail N. side 12 Poplar	N80°E	37.36'
New KC Remon. tag & nail S. side 16" Poplar	S75°E	40.86'
New KC Remon. tag & nail S. side 22" W. Cherry	S55°E	41.13'
New KC Remon. tag & nail SW side 16" Maple	S35°E	52.58'
New KC Remon. tag & nail SW side 12" W. Cherry	S20°E	87.06'

on C/L blktp. road; C/L field dr. West is 14' m/l North row of 6" Apple trees W. is 9' m/l South



Signed by *Kirk Breitels*

Date 6/22/95

Surveyor's Michigan License No. 30077