

\$7.00
\$2.00
SEP 13 1995
COMMISSION

KENT COUNTY REMONUMENTATION

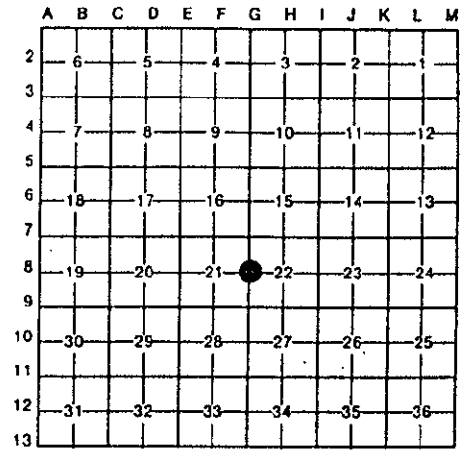
LAND CORNER RECORDATION CERTIFICATE
Filing Requirement of Act 74, Mich. P.A. 1970

For corners in
KENT COUNTY

_____ (County)	Located In:	Corner Code #
1. Public Land Survey	T <u>8N</u> R <u>12W</u>	<u>G-8</u>
	T _____ R _____	_____
	T _____ R _____	_____
	T _____ R _____	_____
2. Property Controlling in Section	S _____ T _____ R _____	_____
	S _____ T _____ R _____	_____
3. Miscellaneous Property in Sec.	S _____ T _____ R _____	_____
	S _____ T _____ R _____	_____
4. Lot No. _____, Recorded Plat _____		
5. Private Claims _____		

STATE OF MICHIGAN
COUNTY OF KENT
RECEIVED FOR RECORD
95 JUN 29 AM 11:51
REG. OF DEEDS
Register of Deeds Stamp & File Number

I, Kirk Breitels, in a field survey on April 5, 19 95, do hereby certify that under requirements of P.A. 74, Michigan P.A. of 1970, the corner points mentioned in lines 1 and 2 above were in conformance with regulations and rules therefore as required in the current manual of survey instructions of the United States Department of the Interior, Bureau of Land Management or by a decree of a Court of Law and/or that the corner points mentioned in lines 3, 4 and 5 above were in conformance with the rules of the Michigan Board of Land Surveyors or by a Decree of a Court of Law; established, re-established, monumented, re-monumented, recovered, found as expressed below:



NOTE: Not more than 4 corners, all in the same town and range, may be recorded on this certificate.

A. Description of original monument and accessories and/or subsequent restoration:

G-8	1838	GLO	Whitcomb	Set Post
		Kent Co. Wit.		Stone at fence corner
	1977	LCRC #1043	McCloskey	High point of stone
	1978	LCRC #1224	Byl	High point of stone
	1981	LCRC #2413	Bueche	Set Kent County Monument

The position of this corner was previously approved by the Kent County Remonumentation Peer Group, monumented by John C. Bueche on 11/12/81 and was recorded per LCRC #2413.

B. Description of corner evidence found and/or method applied in restoring or reestablishing corner:

G-8 Found standard Kent Co. Mon. (Harrison) per witnesses from above LCRC as set by John C. Bueche in place of the Stone he found. Said Stone checks with Kent Co. Wit. and LCRC's #1043 & #1224.

LCRC #2413

KC Remon. tag & nail W. side 12" Beech	N20°E	43.57'
KC Remon. tag & nail W. side 10" Ash	N40°E	36.07'
KC Remon. tag & nail SE side 10" Beech	N65°E	51.00'
KC Remon. tag & nail S. side 12" Ash	S70°E	22.63'
KC Remon. tag & nail SE side 10" Poplar	S45°W	6.83'

at fence cor. N & E; corner is at SW cor. of woods

P.A. 345 1930 KENT COUNTY
PEER APPROVED 6/22/95
CHAIRMAN Harry Hubert

The selected location is accepted by me and is generally accepted by professional surveyors as the best available evidence of the position of the original corner.

C. Description of monument for corner and accessories established to perpetuate locating the position of the corner:

G-8 Standard Kent County Monument

New KC Remon. tag & nail W. side 12" Ash	N40°E	36.08'
New KC Remon. tag & nail SE side 12" Beech	N65°E	51.04'
New KC Remon. tag & nail S. side 20" Ash	S70°E	22.63'
Set KC Remon. tag & nail N. side 8" Orchard Tree	N60°W	32.06'
Set KC Remon. tag & nail W. side 18" Beech	N15°E	45.14'

at fence cor. N & E; corner is at SW cor. of woods



Signed by Kirk Breitels
Surveyor's Michigan License No. 30077

Date 6/22/95