

\$7.00
\$2.00 SEP 13 1995

KENT COUNTY REMONUMENTATION

LAND CORNER RECORDATION CERTIFICATE
Filing Requirement of Act 74, Mich. P.A. 1970

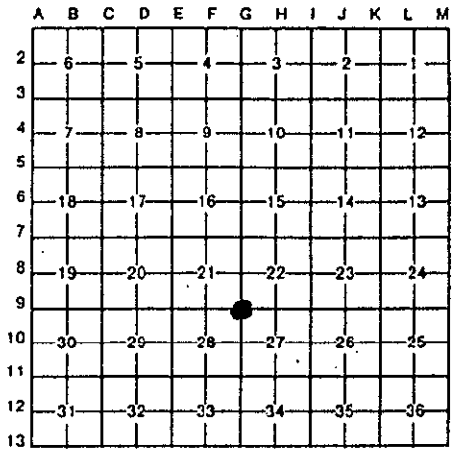
For corners in
KENT COUNTY
(County)

Located In: Corner Code #

1. Public Land Survey	T 8N R 12W	G-9
	T R	
	T R	
	T R	
2. Property Controlling in Section	S T R	
	S T R	
3. Miscellaneous Property in Sec.	S T R	
	S T R	

95 JUN 29 AM 11:54
REG. OF DEEDS
STATE OF MICHIGAN
COUNTY OF KENT
RECEIVED FOR RECORD
469
Register of Deeds Stamp & File Number

4. Lot No. _____, Recorded Plat _____
5. Private Claims _____



I, Kirk Breitels, in a field survey on March 1, 19 95, do hereby certify that under requirements of P.A. 74, Michigan P.A. of 1970, the corner points mentioned in lines 1 and 2 above were in conformance with regulations and rules therefore as required in the current manual of survey instructions of the United States Department of the Interior, Bureau of Land Management or by a decree of a Court of Law and/or that the corner points mentioned in lines 3, 4 and 5 above were in conformance with the rules of the Michigan Board of Land Surveyors or by a Decree of a Court of Law; established, re-established, monumented, re-monumented, recovered, found as expressed below:

NOTE: Not more than 4 corners, all in the same town and range, may be recorded on this certificate.

A. Description of original monument and accessories and/or subsequent restoration:

G-9	1838	GLO	Whitcomb	Set Post
	1956	Kent Co. Wit.		"X" on stone
	1977	LCRC #1043	McCloskey	1" Pipe
	1977	LCRC #1084	VanKooten	1" Iron
	1978	LCRC #1223	Byl	Iron Pipe
	1981	LCRC #2386	Bueche	Set Kent County Monument
	1984	LCRC #3991	Kolehouse	Set Kent County Monument (after const.)

The position of this corner was previously approved by the Kent County Remonumentation Peer Group, monumented by John C. Bueche on 12/3/81 and was recorded per LCRC #2386.

B. Description of corner evidence found and/or method applied in restoring or reestablishing corner:

G-9 Found standard Kent Co. Mon. (Harrison) per witnesses from above LCRC as set by Randy J. Kolehouse at the same position as set in 1981 by John C. Bueche in place of the 1" Iron he found. Said Iron checks with Kent Co. Wit. and LCRC's #1043, #1084, #1223.
LCRC #3991

Nail & KC Remon. tag S. side 12" Apple	N65°E	100.2'
Nail & KC Remon. tag W. side P. Pole	N10°E	48.65'
Nail & KC Remon. tag W. side T. Pole	S20°W	84.45'
NE cor. frame hse.	S37°W	134.32'
NW cor. frame hse.	S50°W	154.88'

C/L 6 Mile Road (blacktop) is 2.5' North

P.A. 345 1990 KENT COUNTY
PEER APPROVED 6/22/95
CHAIRMAN *Harry Bueche*

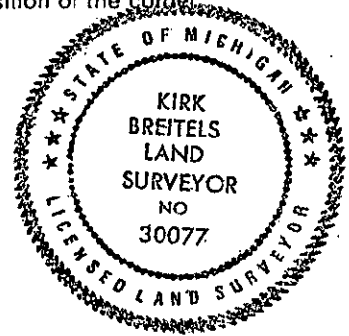
The selected location is accepted by me and is generally accepted by professional surveyors as the best available evidence of the position of the original corner.

C. Description of monument for corner and accessories established to perpetuate locating the position of the corner:

G-9 Standard Kent County Monument

Nail & KC Remon. tag W. side P. Pole	N10°E	48.65'
Nail & KC Remon. tag W. side T. Pole	S20°W	84.45'
Set Nail & KC Remon. tag SE side 10" Apple	N50°E	94.88'
NE cor. frame hse.	S37°W	134.32'
NW cor. frame hse.	S50°W	154.88'
NW cor. top of MBT box	S50°E	59.71'

C/L 6 Mile Road (blacktop) is 2.5' North



Signed by *Kirk Breitels*
Surveyor's Michigan License No. 30077

Date 6/22/95