

KENT COUNTY REMONUMENTATION

LAND CORNER RECORDATION CERTIFICATE  
Filing Requirement of Act 74, Mich. P.A. 1970

\$7.00  
\$2.00  
SEP 10 1995  
COMMISSIONER

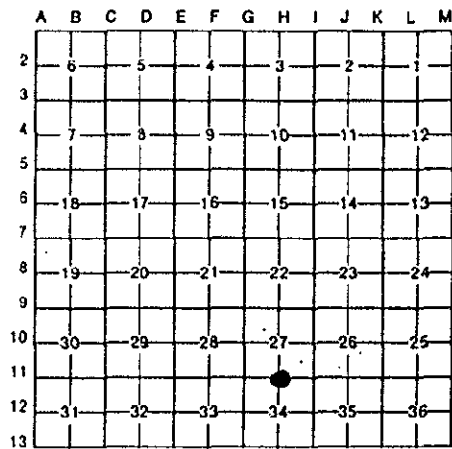
For corners in  
KENT COUNTY  
(County)

Located In: Corner Code #

- |                                    |   |    |   |     |      |
|------------------------------------|---|----|---|-----|------|
| 1. Public Land Survey              | T | 8N | R | 12W | H-11 |
|                                    | T |    | R |     |      |
|                                    | T |    | R |     |      |
|                                    | T |    | R |     |      |
| 2. Property Controlling in Section | S |    | T | R   |      |
|                                    | S |    | T | R   |      |
| 3. Miscellaneous Property in Sec.  | S |    | T | R   |      |
|                                    | S |    | T | R   |      |
4. Lot No. \_\_\_\_\_, Recorded Plat \_\_\_\_\_  
5. Private Claims \_\_\_\_\_

STATE OF MICHIGAN  
COUNTY OF KENT  
RECEIVED FOR RECORD  
95 JUN 29 AM 11:55  
REG. OF DEEDS  
*Lucy Bond*  
8478  
Register of Deeds Stamp & File Number

I, Kirk Breitels, in a field survey on April 24, 19 95, do hereby certify that under requirements of P.A. 74, Michigan P.A. of 1970, the corner points mentioned in lines 1 and 2 above were in conformance with regulations and rules therefore as required in the current manual of survey instructions of the United States Department of the Interior, Bureau of Land Management or by a decree of a Court of Law and/or that the corner points mentioned in lines 3, 4 and 5 above were in conformance with the rules of the Michigan Board of Land Surveyors or by a Decree of a Court of Law; established, re-established, monumented, re-monumented, recovered, found as expressed below:



**NOTE: Not more than 4 corners, all in the same town and range, may be recorded on this certificate.**

A. Description of original monument and accessories and/or subsequent restoration:

- |      |      |               |           |                          |
|------|------|---------------|-----------|--------------------------|
| H-11 | 1838 | GLO           | Whitcomb  | Set Post                 |
|      | 1948 | Kent Co. Wit. |           | Conc. Mon.               |
|      | 1971 | LCRC #76      | Chambers  | "T" Iron                 |
|      | 1972 | LCRC #291     | VanKooten | "T" Iron                 |
|      | 1981 | LCRC #2389    | Bueche    | Set Kent County Monument |
|      | 1990 | LCRC #5386    | Starr     | Kent County Monument     |

The position of this corner was previously approved by the Kent County Remonumentation Peer Group, monumented by John C. Bueche on 12/4/81 and was recorded per LCRC #2389.

B. Description of corner evidence found and/or method applied in restoring or reestablishing corner:

H-11 Found standard Kent Co. Mon. (Harrison) per witnesses from above LCRC as set by John C. Bueche in place of the "T" Iron over a conc. mon. he found. Said "T" Iron and conc. mon. checks with Kent Co. Wit. and LCRC's #76 & #291.

LCRC #2389 & #5386

- |                                  |       |         |
|----------------------------------|-------|---------|
| SW cor. brick house              | N65°E | 216.47' |
| NE cor. brick house              | S70°W | 173.93' |
| "X" cut on North end conc. culv. | N75°E | 43.65'  |
| "X" cut on South end conc. culv. | S70°E | 42.07'  |
| "X" cut on North end conc. culv. | S07°W | 150.57' |
- C/L blktp. N-S is East 4' m/l  
On C/L grav. road West

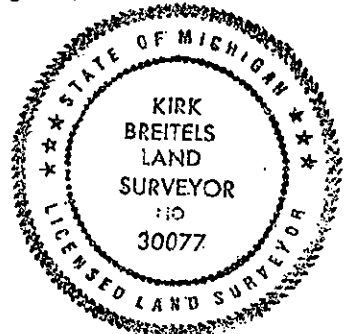
P.A. 315 1990 KENT COUNTY  
PEER APPROVED 6/22/95  
CHAIRMAN *John C. Bueche*

The selected location is accepted by me and is generally accepted by professional surveyors as the best available evidence of the position of the original corner.

C. Description of monument for corner and accessories established to perpetuate locating the position of the corner:

H-11 Standard Kent County Monument

- |                                  |       |         |
|----------------------------------|-------|---------|
| SW cor. brick house              | N65°E | 216.47' |
| NE cor. brick house              | S70°W | 173.93' |
| "X" cut on North end conc. culv. | N75°E | 43.65'  |
| "X" cut on South end conc. culv. | S70°E | 42.07'  |
| "X" cut on North end conc. culv. | S07°W | 150.57' |
- C/L blktp. N-S is East 4' m/l  
On C/L blktp. road West



Signed by *Kirk Breitels* Date 6/22/95  
Surveyor's Michigan License No. 30077