

SEP 18 1985

KENT COUNTY REMONUMENTATION

LAND CORNER RECORDATION CERTIFICATE

Filing Requirement of Act 74, Mich. P.A. 1970

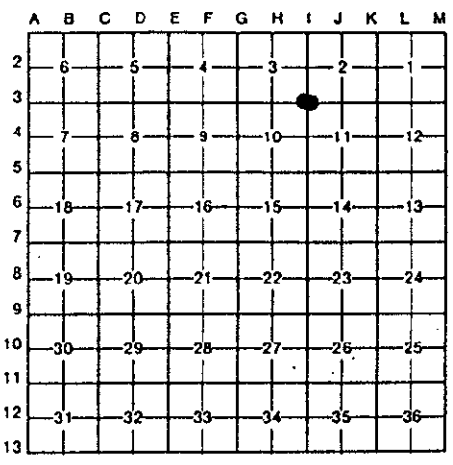
For corners in KENT COUNTY

(County)	Located In:	Corner Code #
1. Public Land Survey	T <u>8N</u> R <u>12W</u>	<u>I-3</u>
	T _____ R _____	_____
	T _____ R _____	_____
	T _____ R _____	_____
2. Property Controlling in Section	S _____ T _____ R _____	_____
	S _____ T _____ R _____	_____
3. Miscellaneous Property in Sec.	S _____ T _____ R _____	_____
	S _____ T _____ R _____	_____

STATE OF MICHIGAN
 COUNTY OF KENT
 RECEIVED FOR RECORD
 95 JUN 29 AM 11:55
 REG. OF DEEDS
 8481

Register of Deeds Stamp & File Number

- 4. Lot No. _____, Recorded Plat _____
- 5. Private Claims _____



I, Kirk Breitels, in a field survey on March 1, 19 95

do hereby certify that under requirements of P.A. 74, Michigan P.A. of 1970, the corner points mentioned in lines 1 and 2 above were in conformance with regulations and rules therefore as required in the current manual of survey instructions of the United States Department of the Interior, Bureau of Land Management or by a decree of a Court of Law and/or that the corner points mentioned in lines 3, 4 and 5 above were in conformance with the rules of the Michigan Board of Land Surveyors or by a Decree of a Court of Law; established, re-established, monumented, re-monumented, recovered, found as expressed below:

NOTE: Not more than 4 corners, all in the same town and range, may be recorded on this certificate.

A. Description of original monument and accessories and/or subsequent restoration:

I-3	1838	GLO	Whitcomb	Set Post
	1880	Williams & Works		Post-stone
	1934	Kent Co. Wit.		Iron on leaded stone
	1985	LCRC #4335	Bueche	Set Kent County Monument
	1990	LCRC #5389	Starr	Kent County Monument

The position of this corner was previously approved by the Kent County Remonumentation Peer Group, monumented by John c. Bueche on 10/17/85 and was recorded per LCRC #4335.

B. Description of corner evidence found and/or method applied in restoring or reestablishing corner:

I-3 Found standard Kent Co. Mon. (Harrison) per witnesses from above LCRC as set by John C. Bueche in place of the Rerod he found. Said Rerod checks with Kent Co. Wit. and Williams & Works information.

LCRC #4335 & #5389

"X" cut in E. end conc. culvert	N30°E	65.41'	P.A. 345 1990 KENT COUNTY
"X" cut in W. end conc. culvert	N25°W	62.65'	PEER APPROVED 6/22/95
Nail & KC Remon. tag NW side P. Pole	S50°W	73.22'	CHAIRMAN <i>Starr</i>
Nail & KC Remon. tag S. side wood guard post	S70°E	41.40'	
Nail & KC Remon. tag S. side wood guard post	N70°E	49.87'	

Centerline blacktop E & W is N 4' m/l; On centerline blacktop N.

The selected location is accepted by me and is generally accepted by professional surveyors as the best available evidence of the position of the original corner.

C. Description of monument for corner and accessories established to perpetuate locating the position of the corner:

I-3 Standard Kent County Monument			
"X" cut in E. end conc. culvert	N30°E	65.50'	
"X" cut in W. end conc. culvert	N25°W	62.65'	
Nail & KC Remon. tag NW side P. Pole	S50°W	73.22'	
Nail & KC Remon. tag S. side wood guard post	S70°E	41.52'	

Centerline blacktop E & W is N 4' m/l; On centerline blacktop N.



Signed by Kirk Breitels

Date 6/22/95

Surveyor's Michigan License No. 30077