

SURV

REMONUMENTATION

SEP 18 1986  
\$7.00  
\$2.00

KENT COUNTY REMONUMENTATION

LAND CORNER RECORDATION CERTIFICATE  
Filing Requirement of Act 74, Mich. P.A. 1970

For corners in  
KENT COUNTY  
(County)

Located In:	Corner Code #
T 8N R 12W	I-4
T R	
T R	
T R	
T R	
S T R	
S T R	
S T R	
S T R	

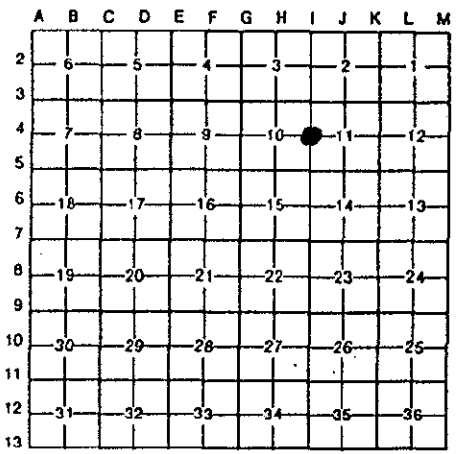
STATE OF MICHIGAN  
COUNTY OF KENT  
RECEIVED FOR RECORD  
95 JUN 29 AM 11:55  
REG. OF DEEDS  
8482  
Register of Deeds Stamp & File Number

- 4. Lot No. \_\_\_\_\_, Recorded Plat \_\_\_\_\_
- 5. Private Claims \_\_\_\_\_

I, Kirk Breitels, in a field survey on Feb. 28, 19 95

do hereby certify that under requirements of P.A. 74, Michigan P.A. of 1970, the corner points mentioned in lines 1 and 2 above were in conformance with regulations and rules therefore as required in the current manual of survey instructions of the United States Department of the Interior, Bureau of Land Management or by a decree of a Court of Law and/or that the corner points mentioned in lines 3, 4 and 5 above were in conformance with the rules of the Michigan Board of Land Surveyors or by a Decree of a Court of Law; established, re-established, monumented, re-monumented, recovered, found as expressed below:

NOTE: Not more than 4 corners, all in the same town and range, may be recorded on this certificate.



A. Description of original monument and accessories and/or subsequent restoration:

I-4	1838	GLO	Whitcomb	Set Post
	1888	Williams & Works		Iron
		Kent Co. Wit.		Iron & brick
	1986	LCRC #4414	Bueche	Set Kent County Monument
	1990	LCRC #5390	Starr	Kent County Monument

The position of this corner was previously approved by the Kent County Remonumentation Peer Group, monumented by John C. Bueche on 2/26/86 and was recorded per LCRC #4414.

B. Description of corner evidence found and/or method applied in restoring or reestablishing corner:

I-4 Found standard Kent Co. Mon. (Harrison) per witnesses from above LCRC as set by John C. Bueche in place of the "T" Iron he found. Said "T" Iron checks with Kent Co. Wit. and Williams & Works information.

LCRC #4414 & #5390

Nail & KC Remon. tag E. side	24" Oak	N10°W	81.33'
Nail & KC Remon. tag SW side	44" Oak	N45°W	23.76'
Nail & KC Remon. tag E. side	38" Maple	South	51.93'
Nail & KC Remon. tag N. side	10" Maple	West	42.36'
Fence post	NW 0.8' m/l		
Fence & tree line	- North & West		
Field line	- South & East		

P.A. 345 1990 KENT COUNTY,  
PEER APPROVED 6/22/95  
CHAIRMAN *Harry Bueche*

The selected location is accepted by me and is generally accepted by professional surveyors as the best available evidence of the position of the original corner.

C. Description of monument for corner and accessories established to perpetuate locating the position of the corner:

I-4 Standard Kent County Monument			
New Nail & KC Remon. tag E. side	30" Oak	N10°W	81.28'
New Nail & KC Remon. tag SW side	48" Oak	N45°W	23.81'
New Nail & KC Remon. tag E. side	42" Maple	South	51.90'
New Nail & KC Remon. tag N. side	10" Maple	West	42.35'
Fence post	NW 0.8' m/l		
Fence & tree line	- North & West		
Field line	- South & East		



Signed by *Kirk Breitels* Date 6/22/95  
Surveyor's Michigan License No. 30077