

\$7.00  
\$2.00

SEP 18 1995

KENT COUNTY REMONUMENTATION

COMMISSION

LAND CORNER RECORDATION CERTIFICATE

Filing Requirement of Act 74, Mich. P.A. 1970

For corners in  
KENT COUNTY

(County)	Located In:	Corner Code #
1. Public Land Survey	T 8N R 12W	I-6
	T R	
	T R	
	T R	
2. Property Controlling in Section	S T R	
	S T R	
3. Miscellaneous Property in Sec.	S T R	
	S T R	
4. Lot No. _____, Recorded Plat _____		
5. Private Claims _____		

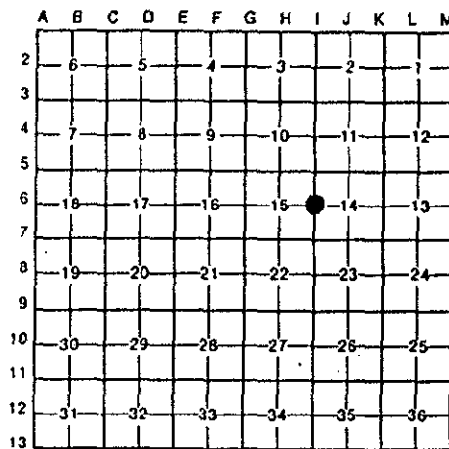
STATE OF MICHIGAN  
COUNTY OF KENT  
RECEIVED FOR RECORD

95 JUN 29 AM 11:55  
8484

REG. OF DEEDS

Register of Deeds Stamp & File Number

I, Kirk Breitels, in a field survey on Feb. 20, 19 95, do hereby certify that under requirements of P.A. 74, Michigan P.A. of 1970, the corner points mentioned in lines 1 and 2 above were in conformance with regulations and rules therefore as required in the current manual of survey instructions of the United States Department of the Interior, Bureau of Land Management or by a decree of a Court of Law and/or that the corner points mentioned in lines 3, 4 and 5 above were in conformance with the rules of the Michigan Board of Land Surveyors or by a Decree of a Court of Law; established, re-established, monumented, re-monumented, recovered, found as expressed below:



NOTE: Not more than 4 corners, all in the same town and range, may be recorded on this certificate.

A. Description of original monument and accessories and/or subsequent restoration:

I-6	1838	GLO	Whitcomb	Set Post
	1934	Kent Co. Wit.		Stone & brick
	1972	LCRC #72	Spicer	"T" Iron
			Byl	1 1/2" Iron
	1983	LCRC #3366	Bueche	Set Kent County Monument
	1984	LCRC #3990	Kolehouse	Reset Kent County Monument
	1990	LCRC #5392	Starr	Kent County Monument

The position of this corner was previously approved by the Kent County Remonumentation Peer Group, monumented by John C. Bueche on 5/10/83 and was recorded per LCRC #3366.

B. Description of corner evidence found and/or method applied in restoring or reestablishing corner:

I-6 Found standard Kent Co. Mon. (Harrison) per witnesses from above LCRC as set by Randy J. Kolehouse in the same position as set in 1983 by John C. Bueche in place of the 1 1/2" x 20" Iron he found in brick & stone. Said Iron in brick and stone checks with Kent Co. Wit. and Byl information. Bent "T" Iron was 1.05' E. and 0.2' N. per LCRC #3366 LCRC #3990 & #5392

Nail & KC Remon. tag E. side 8" Apple	S25°E	81.42'
Nail & KC Remon. tag N. side 8" Apple	S55°E	44.86'
Nail & KC Remon. tag N. side wood post	East	24.47'
S. end 12" C.M.P.	S80°W	22.65'
N. end 12" C.M.P.	N60°W	28.95'

P.A. 345 1990 KENT COUNTY  
PEER APPROVED 6/22/95  
CHAIRMAN Randy Kolehouse

C/L Bristol (blktp.) N-S is East 0.5'; On tree row West; on field dr. East  
The selected location is accepted by me and is generally accepted by professional surveyors as the best available evidence of the position of the original corner.

C. Description of monument for corner and accessories established to perpetuate locating the position of the corner:

I-6 Standard Kent County Monument		
New Nail & KC Remon. tag E. side 10" Apple	S25°E	81.42'
Nail & KC Remon. tag N. side wood post	East	24.47'
NW cor. conc. pad for elec. box	S55°W	126.80'
Set Nail & KC Remon. tag N. side 10" Apple	S60°E	88.58'
Set Nail & KC Remon. tag NE side 10" Apple	S35°E	54.47'

C/L Bristol (blktp.) N-S is East 0.5'; On tree row West; on field dr. East

Signed by Kirk Breitels  
Surveyor's Michigan License No. 30077

Date 6/22/95

