

\$7.00
\$2.00

SEP 18 1985

COMMISSION

KENT COUNTY REMONUMENTATION

LAND CORNER RECORDATION CERTIFICATE

Filing Requirement of Act 74, Mich. P.A. 1970

For corners in
KENT COUNTY

(County)

Located In:

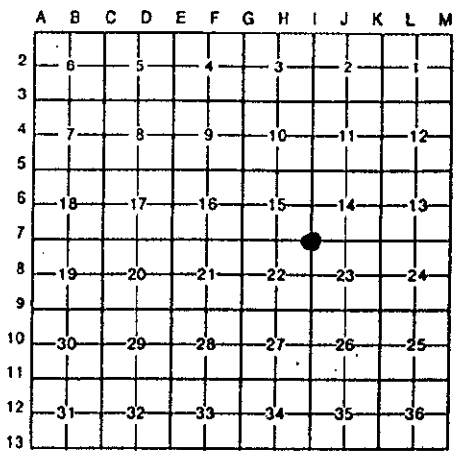
Corner Code #

1. Public Land Survey	T	8N	R	12W	I-7
	T		R		
	T		R		
	T		R		
2. Property Controlling in Section	S		T	R	
	S		T	R	
3. Miscellaneous Property in Sec.	S		T	R	
	S		T	R	

- 4. Lot No. _____, Recorded Plat _____
- 5. Private Claims _____

STATE OF MICHIGAN
COUNTY OF KENT
RECEIVED FOR RECORD
95 JUN 29 AM 11:55
REG. OF DEEDS
W. J. Spang
8485
Register of Deeds Stamp & File Number

I, Kirk Breitels, in a field survey on Feb. 20, 1995, do hereby certify that under requirements of P.A. 74, Michigan P.A. of 1970, the corner points mentioned in lines 1 and 2 above were in conformance with regulations and rules therefore as required in the current manual of survey instructions of the United States Department of the Interior, Bureau of Land Management or by a decree of a Court of Law and/or that the corner points mentioned in lines 3, 4 and 5 above were in conformance with the rules of the Michigan Board of Land Surveyors or by a Decree of a Court of Law; established, re-established, monumented, re-monumented, recovered, found as expressed below:



NOTE: Not more than 4 corners, all in the same town and range, may be recorded on this certificate.

A. Description of original monument and accessories and/or subsequent restoration:

I-7	1838	GLO	Whitcomb	Set Post
	1969	Kent Co. Wit.		Iron in mon. box
	1972	LCRC #333	Spicer	3/4" Iron in mon. box
	1980	LCRC #1363	Stadt	Iron in mon. box
	1981	LCRC #2610	Nederveld	Set Kent County Monument
	1990	LCRC #5393	Starr	Kent County Monument

The position of this corner was previously approved by the Kent County Remonumentation Peer Group, monumented by Gordon D. Nederveld on 9/15/81 and was recorded per LCRC #2610

B. Description of corner evidence found and/or method applied in restoring or reestablishing corner:

I-7 Found standard Kent Co. Mon. (Harrison) per witnesses from above LCRC as set by Gordon D. Nederveld in place of the 3/4" Iron he found. Said Iron checks with Kent Co. Wit. and LCRC's #333 & #1363.

LCRC #2610 & #5393

NE cor. hse. foundation	S45°W	105.52'
SE cor. hse. foundation	N40°W	99.55'
NW cor. brick porch pillar	S40°E	92.71'
Nail & KC Remon. tag SW side CP/MBT Pole	N35°W	45.03'
Top C/L Tele. Box	N40°E	50.48'

P.A. 345 1990 KENT COUNTY

PEER APPROVED 6/22/95
CHAIRMAN *Harry Huber*

The selected location is accepted by me and is generally accepted by professional surveyors as the best available evidence of the position of the original corner.

C. Description of monument for corner and accessories established to perpetuate locating the position of the corner:

I-7 Standard Kent County Monument

NE cor. hse. foundation	S45°W	105.52'
SE cor. hse. foundation	N40°W	99.55'
NW cor. brick porch pillar	S40°E	92.71'
Nail & KC Remon. tag SW side CP/MBT Pole	N35°W	45.03'
Top C/L Tele. Box	N40°E	50.48'
PK Nail in curb joint	N50°E	43.90'



Signed by *Kirk Breitels*

Date 6/22/95

Surveyor's Michigan License No. 30077