

SEP 18 1995

KENT COUNTY REMONUMENTATION

\$7.00  
\$2.00

COMMISSION

LAND CORNER RECORDATION CERTIFICATE  
Filing Requirement of Act 74, Mich. P.A. 1970

For corners in  
KENT COUNTY  
(County)

Located In:

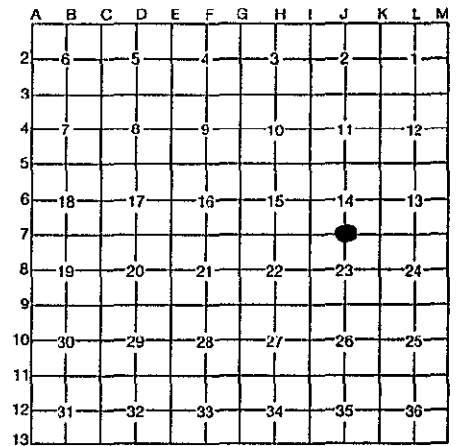
Corner Code #

1. Public Land Survey	T	8N	R	12W	J-7
	T		R		
	T		R		
	T		R		
2. Property Controlling in Section	S		T	R	
	S		T	R	
3. Miscellaneous Property in Section	S		T	R	
	S		T	R	

STATE OF MICHIGAN  
COUNTY OF KENT  
RECEIVED FOR RECORD  
95 JUN 29 AM 11:55  
REG. OF DEEDS  
*Lucy Bond*  
8492

Register of Deeds Stamp & File Number

- 4. Lot No. \_\_\_\_\_, Recorded Plat \_\_\_\_\_
- 5. Private Claims \_\_\_\_\_



I, Kirk Breitels, in a field survey on Feb. 20, 1995, do hereby certify that under requirements of P.A. 74, Michigan P.A. of 1970, the corner points mentioned in lines 1 and 2 above were in conformance with regulations and rules therefore as required in the current manual of survey instructions of the United States Department of the Interior, Bureau of Land Management or by a decree of a Court of Law and/or that the corner points mentioned in lines 3, 4 and 5 above were in conformance with the rules of the Michigan Board of Professional Surveyors or by a Decree of a Court of Law; established, re-established, monumented, re-monumented, recovered, found as expressed below:

NOTE: Not more than 4 corners, all in the same town and range, may be recorded on this certificate.

A. Description of original monument and accessories and/or subsequent restoration:

J-7	1838	GLO	Whitcomb	Set Post
	1935	Kent Co. Wit.		Iron on stone
	1959	Williams & Works		1" Iron
	1969	Kent Co. Wit.		Iron in mon. box
	1983	LCRC #3367	Bueche	Set Kent County Monument
	1990	LCRC #5402	Starr	Kent County Monument

The position of this corner was previously approved by the Kent County Remonumentation Peer Group, monumented by John C. Bueche on 5/10/83 and was recorded per LCRC #3367.

B. Description of corner evidence found and/or method applied in restoring or reestablishing corner:

J-7 Found standard Kent Co. Mon. (Harrison) per witnesses from above LCRC as set by John C. Bueche in place of the Iron he found inside a mon. box over a stone. Said Iron checks with Kent Co. Wit. and Williams & Works information.

LCRC #3367 & #5402

"X" cut on conc. culv.	S00°E	27.82'
"X" cut on conc. culv.	N00°E	29.82'
Nail & KC Remon. tag W. side P. Pole	S20°W	43.21'
NW cor. bldg. @ brick	S50°E	154.44'
Top C/L fire hydrant	N30°E	34.77'
NE cor. frame building	S15°E	108.16'

On C/L E-W bit. road; On fence line N-S

The selected location is accepted by me and is generally accepted by professional surveyors as the best available evidence of the position of the original corner.

P.A. 345 1930 KENT COUNTY  
PEER APPROVED 6/22/95  
CHAIRMAN *Harry Hubbell*

C. Description of monument for corner and accessories established to perpetuate locating the position of the corner:

J-7 Standard Kent County Monument

"X" cut on conc. culv.	S00°E	27.90'
"X" cut on conc. culv.	N00°E	29.82'
Nail & KC Remon. tag W. side P. Pole	S20°W	43.21'
NW cor. bldg. @ brick	S50°E	154.44'
Top C/L fire hydrant	N30°E	34.77'
NE cor. frame building (vinyl siding)	S15°E	108.14'

On C/L E-W bit. road; On fence line N-S



Signed by Kirk Breitels

Date 6/22/95

Surveyor's Michigan License No. 30077