

\$7.00  
\$2.00

SEP 13 1995

KENT COUNTY REMONUMENTATION

COMMISSION

LAND CORNER RECORDATION CERTIFICATE

Filing Requirement of Act 74, Mich. P.A. 1970

For corners in  
KENT COUNTY  
(County)

Located In:

Corner Code #

1. Public Land Survey	T	<u>8N</u>	R	<u>12W</u>	<u>J-9</u>	
	T	_____	R	_____	_____	
	T	_____	R	_____	_____	
	T	_____	R	_____	_____	
2. Property Controlling in Section	S	_____	T	_____	R	_____
	S	_____	T	_____	R	_____
3. Miscellaneous Property in Section	S	_____	T	_____	R	_____
	S	_____	T	_____	R	_____

STATE OF MICHIGAN  
COUNTY OF KENT  
RECEIVED FOR RECORD

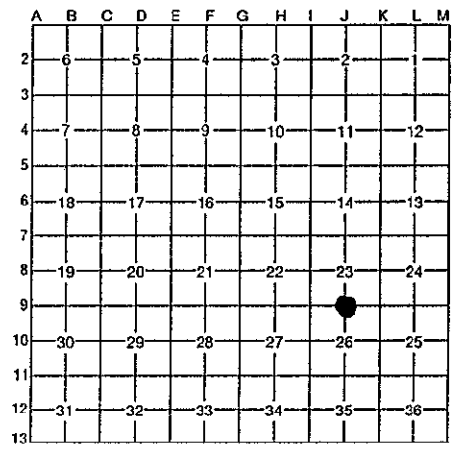
95 JUN 29 AM 11:56

REG. OF DEEDS  
8493

Register of Deeds Stamp & File Number

4. Lot No. \_\_\_\_\_, Recorded Plat \_\_\_\_\_

5. Private Claims \_\_\_\_\_



I, Kirk Breitels, in a field survey on Feb. 10, 1995, do hereby certify that under requirements of P.A. 74, Michigan P.A. of 1970, the corner points mentioned in lines 1 and 2 above were in conformance with regulations and rules therefore as required in the current manual of survey instructions of the United States Department of the Interior, Bureau of Land Management or by a decree of a Court of Law and/or that the corner points mentioned in lines 3, 4 and 5 above were in conformance with the rules of the Michigan Board of Professional Surveyors or by a Decree of a Court of Law; established, re-established, monumented, re-monumented, recovered, found as expressed below:

NOTE: Not more than 4 corners, all in the same town and range, may be recorded on this certificate.

A. Description of original monument and accessories and/or subsequent restoration:

J-9	1838	GLO	Whitcomb	Set Post
		Kent Co. Wit.		1/2" Iron and stones
	1978	LCRC #1138	VanKooten	RR Spike
	1981	LCRC #2392	Bueche	Set Kent County Monument
	1990	LCRC #5403	Starr	Kent County Monument

The position of this corner was previously approved by the Kent County Remonumentation Peer Group, monumented by John C. Bueche on 12/3/81 and was recorded per LCRC #2392.

B. Description of corner evidence found and/or method applied in restoring or reestablishing corner:

J-9 Found standard Kent Co. Mon. (Harrison) per witnesses from above LCRC as set by John C. Bueche in place of the PK Nail over a 3/4 x 18" Iron he found. Both PK Nail and Iron check with Kent Co. Wit. and LCRC #1138.

LCRC #2392 & #5403

Nail & KC Remon. tag E. side P. Pole	N10°E	86.88'
Nail & KC Remon. tag W. side 28" Chinese Elm	S05°E	40.64'
Nail & KC Remon. tag E. side 10" Oak	N10°W	58.26'
"X" cut E. end conc. culv.	N50°W	61.93'
NE corner house foundation	S25°E	89.66'
Nail & KC Remon. tag N. side P. Pole	S65°E	87.05'

P.A. 345 1980 KENT COUNTY  
PEER APPROVED 6/22/95  
CHAIRMAN *Harry Huber*

The selected location is accepted by me and is generally accepted by professional surveyors as the best available evidence of the position of the original corner.

C. Description of monument for corner and accessories established to perpetuate locating the position of the corner:

J-9 Standard Kent County Monument		
Nail & KC Remon. tag E. side P. Pole	N10°E	86.90'
New Nail & KC Remon. tag E. side 12" Oak	N10°W	58.26'
"X" cut E. end conc. culv.	N50°W	61.93'
NE corner house foundation	S25°E	89.62'
Nail & KC Remon. tag N. side P. Pole	S65°E	87.02'
NW corner house foundation	N10°E	84.58'
On C/L E-W bit. road; On tree row South		



Signed by *Kirk Breitels*

Date 6/22/95

Surveyor's Michigan License No. 30077