

7.00
32.00

SEP 1 1995

KENT COUNTY REMONUMENTATION

LAND CORNER RECORDATION CERTIFICATE
Filing Requirement of Act 74, Mich. P.A. 1970

For corners in
KENT COUNTY
(County)

Located In:

Corner Code #

1. Public Land Survey	T	8N	R	12W	K-6
	T		R		
	T		R		
	T		R		
2. Property Controlling in Section	S		T	R	
	S		T	R	
3. Miscellaneous Property in Section	S		T	R	
	S		T	R	

STATE OF MICHIGAN
COUNTY OF KENT
RECEIVED FOR RECORD

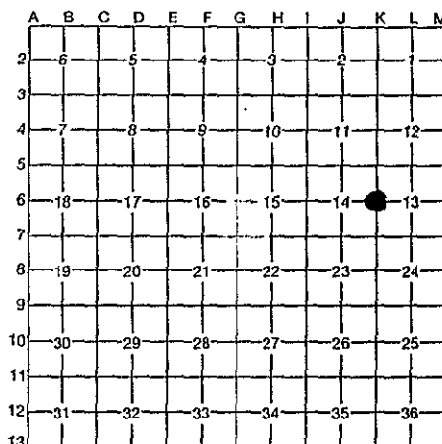
95 JUN 29 AM 11:56

REG. OF DEEDS
8499

Register of Deeds Stamp & File Number

- 4. Lot No. _____, Recorded Plat _____
- 5. Private Claims _____

I, Kirk Breitels, in a field survey on Feb. 7, 1995, do hereby certify that under requirements of P.A. 74, Michigan P.A. of 1970, the corner points mentioned in lines 1 and 2 above were in conformance with regulations and rules therefore as required in the current manual of survey instructions of the United States Department of the Interior, Bureau of Land Management or by a decree of a Court of Law and/or that the corner points mentioned in lines 3, 4 and 5 above were in conformance with the rules of the Michigan Board of Professional Surveyors or by a Decree of a Court of Law; established, re-established, monumented, re-monumented, recovered, found as expressed below:



NOTE: Not more than 4 corners, all in the same town and range, may be recorded on this certificate.

A. Description of original monument and accessories and/or subsequent restoration:

K-6	1838	GLO	Whitcomb	Set Post
	1971	Kent Co. Wit.		3/4" Iron
	1972	LCRC #334	Spicer	3/4" Iron
	1982	LCRC #3067	Jonker	Set Kent County Monument
	1990	LCRC #5410	Starr	Kent County Monument

The position of this corner was previously approved by the Kent County Remonumentation Peer Group, monumented by Robert J. Jonker on 8/17/82 and was recorded per LCRC #3067.

B. Description of corner evidence found and/or method applied in restoring or reestablishing corner:

K-6 Found standard Kent Co. Mon. (Harrison) per witnesses from above LCRC as set by Robert J. Jonker in place of the 4" x 36" Plat Monument he found. Said Plat Monument checks with Kent Co. Wit. and MDSH information.

LCRC #3067 & #5410

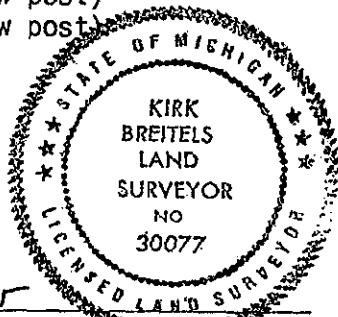
Nail & KC Remon. tag W. side P & T Pole	N25°E	154.00'	P.A. 3:15 1990 KENT COUNTY
Nail & KC Remon. tag on top of guard post	N60°W	16.88'	PEER APPROVED 6/22/95
Nail & KC Remon. tag on top of guard post	S30°W	32.11'	CHAIRMAN <i>Harry Ruben</i>
C/L N.B. lane M-37 - West		37.8'	
NE cor. of H/W (not wing wall) on tree line to East	S20°E	114.10'	

The selected location is accepted by me and is generally accepted by professional surveyors as the best available evidence of the position of the original corner.

C. Description of monument for corner and accessories established to perpetuate locating the position of the corner:

K-6 Standard Kent County Monument

Nail & KC Remon. tag W. side P. Pole	N25°E	153.95'	
Set Nail & KC Remon. tag on top of guard post	N35°W	12.82'	(new post)
Set Nail & KC Remon. tag on top of guard post	S40°W	17.56'	(new post)
NE cor. of H/W (not wing wall)	S20°E	113.80'	
NW cor. brick bldg. (4' above ground)	N50°E	143.90'	
C/L N.B. lane M-37 - West		37.8' more or less	
on tree line to East			



Signed by *Kirk Breitels*
Surveyor's Michigan License No. 30077

Date 6/22/95