

SURVEY & REMONUMENTATION

APR 28 1995

KENT COUNTY REMONUMENTATION

COMMISSION

LAND CORNER RECORDATION CERTIFICATE
Filing Requirement of Act 74, Mich. P.A. 1970

STATE OF MICHIGAN
COUNTY OF KENT
RECEIVED FOR RECORD

94 DEC 27 AM 9:04

W. R. Byl
REG. OF DEEDS

For corners in
KENT COUNTY

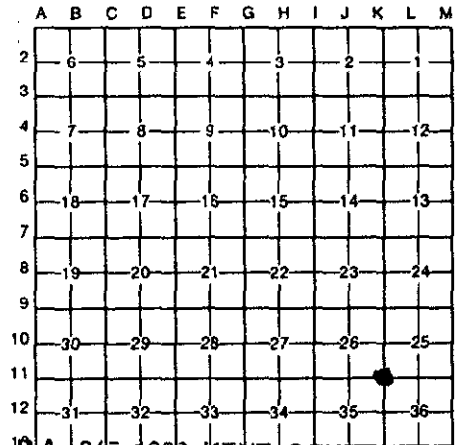
(County)	Located In:	Corner Code #
1. Public Land Survey	T <u>8N</u> R <u>12W</u>	K-11
	T _____ R _____	_____
	T _____ R _____	_____
	T _____ R _____	_____
2. Property Controlling in Section	S _____ T _____ R _____	_____
	S _____ T _____ R _____	_____
3. Miscellaneous Property in Sec.	S _____ T _____ R _____	_____
	S _____ T _____ R _____	_____

7906

Register of Deeds Stamp & File Number

4. Lot No. _____, Recorded Plat _____
5. Private Claims _____

I, William R. Byl, in a field survey on Oct. 19, 19 94, do hereby certify that under requirements of P.A. 74, Michigan P.A. of 1970, the corner points mentioned in lines 1 and 2 above were in conformance with regulations and rules therefore as required in the current manual of survey instructions of the United States Department of the Interior, Bureau of Land Management or by a decree of a Court of Law and/or that the corner points mentioned in lines 3, 4 and 5 above were in conformance with the rules of the Michigan Board of Land Surveyors or by a Decree of a Court of Law; established, re-established, monumented, re-monumented, recovered, found as expressed below:



NOTE: Not more than 4 corners, all in the same town and range, may be recorded on this certificate.

A. Description of original monument and accessories and/or subsequent restoration:

K-11	1838	GLO	Whitcomb	Set Post
	1960	Kent Co. Wit.		Iron in mon. box
	1974	LCRC #763	Bonnema	Boat Spike in mon. box
	1981	LCRC #2567	Bueche	Set Kent County Monument in mon. box
	1990	LCRC #5415	Starr	Kent County Monument

The position of this corner was previously approved by the Kent County Remonumentation Peer Group, monumented by John C. Bueche on 12/10/81 and was recorded per LCRC #2567

B. Description of corner evidence found and/or method applied in restoring or reestablishing corner:

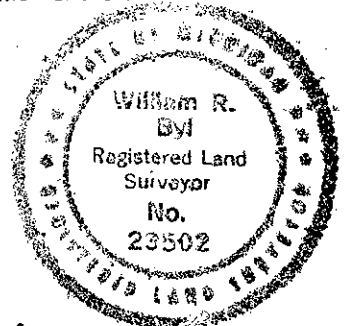
K-11 Found standard Kent Co. Mon. (Harrison) per witnesses from above LCRC as set by John C. Bueche in place of the Boat Spike he found inside a mon. box. Said Boat Spike in mon. box checks with Kent Co. Wit. and LCRC #763.

LCRC #2567		LCRC #5415	
NE cor. bldg.	S80°W 64.35'	NE cor. bldg.	S80°W 64.35'
"X" cut on conc. curb	N60°E 57.42'	"X" cut in conc. curb	N60°E 57.42'
"X" cut on conc. curb	S50°E 79.39'	"X" cut in conc. curb	S50°E 79.39'
PK N. side T & P Pole on C/L of blktp. N-S (5 lanes)	N50°W 48.02'	Nail & KC tag N. side P. Pole	N45°W 47.93'
on C/L of blktp. E		Nail & KC tag NW side P. Pole	N40°E 75.94'
		Nail & KC tag N. side P. Pole	S55°E 93.60'

The selected location is accepted by me and is generally accepted by professional surveyors as the best available evidence of the position of the original corner.

C. Description of monument for corner and accessories established to perpetuate locating the position of the corner:

K-11 Standard Kent County Monument in mon. box		
NE cor. bldg. (stone veneer)	S80°W	64.21'
"X" cut on conc. curb	N60°E	57.42'
Nail & KC Remon. tag N. side P. Pole	N45°W	47.85'
Nail & KC Remon. tag NW side P. Pole	N40°E	75.97'
Set Nail & KC Remon. tag NE side P. Pole	S55°E	93.66'
C/L top of fire hydrant	N75°E	147.29'
on C/L of blktp. N-S (5 lanes)		
on C/L of blktp. E		



Signed by *W. R. Byl* Date 12/07/94
Surveyor's Michigan License No. 23502