

\$7.00
\$2.00

MAY 22 2000

LAND CORNER RECORDATION CERTIFICATE
Filing Requirement of Act 74, Mich. P.A. 1970
KENT COUNTY REMONUMENTATION

STATE OF MICHIGAN
COUNTY OF KENT
RECEIVED FOR RECORD
1999 DEC - 8 AM 10: 06

REG. OF DEEDS
[Signature]

11552

Register of Deeds Stamp & File Number

SECTION
For corners in
Kent
(County)

Located in: Oakfield Township
Corner Code #

1. Public Land Survey	T	<u>9N</u>	R	<u>9W</u>	<u>G-4</u>
	T		R		
	T		R		
	T		R		
2. Property Controlling in Section	S		T	R	
	S		T	R	
3. Miscellaneous Property in Sec.	S		T	R	
	S		T	R	

4. Lot No. _____, Recorded Plat _____
5. Private Claims _____

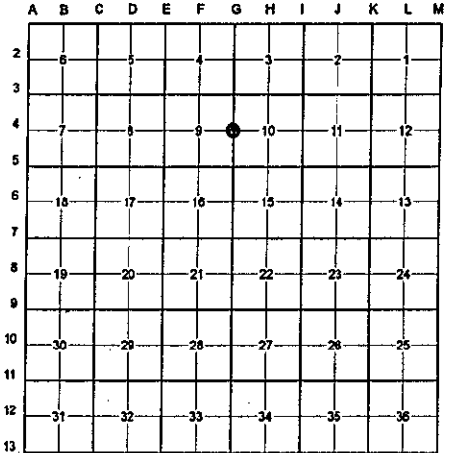
I, Randy Kolehouse, in a field survey on October 14 19 99, do hereby certify that under requirements of P.A. 74 Michigan P.A. of 1970, the corner points mentioned in lines 1 and 2 above were in conformance with regulations and rules therefore as required in the current manual of survey instructions of the United States Department of the interior, Bureau of Land Management or by a decree of a Court of Law and/or that the corner points mentioned in lines 3, 4 and 5 above were in conformance with the rules of the Michigan Board of Land Surveyors or by a Decree of a Court of Law; established, re-established, monumented, re-monumented, recovered, found as expressed below:

NOTE: Not more than 4 corners, all in the same town and range, may be recorded on this certificate.

A. Description of original monument and accessories and/or subsequent restoration:

G-4	1837	G.L.O. Notes	Cathcart	Set Post
	1939-63	Witness Map	K.C. Surveyor	Large Stone & 3/8" Iron
	1981	L.C.R.C. #2317	Nederveld & Jonker	3/8" Iron
	1982	L.C.R.C. #2869	Jonker Land Surveys	Fnd. 3/8" Iron & Stone / Set K.C. Monument in Gravel
	1989	L.C.R.C. #5208	John Bueche	K.C. Monument
	1997	L.C.R.C. #9680	Kirk Breitels	K.C. Monument

P.A. 345 1990 KENT COUNTY
PEER APPROVED 10/28/99
CHAIRMAN [Signature]



This corner was originally approved by the Kent County Remonumentation Peer Group and monumented by Rob Jonker on 5/19/82 and was recorded per L.C.R.C. #2869.

B. Description of corner evidence found and/or method applied in restoring or reestablishing corner:

G-4 Found a Standard Kent County Monument 15' ± North of the C/L intersection of Heintzelmann Avenue (bit.) running North and South and Sandy Bottom Street (gravel) running East and West per L.C.R.C.'s #2869, #5208, and #9680 as set by Rob Jonker in place of a 3/8" iron and stone he found which checked L.C.R.C. #2317 and the K.C. Surveyor's records.

L.C.R.C. #2869

L.C.R.C. #9680

Remon. tag on S side 6" Oak N70°E 66.03'
Remon. tag on E side 12" Oak S30°W 104.62'
Remon. tag on E side 16" Oak N30°W 54.95'
Remon. tag on W side 14" Oak N25°E 111.12'
Nail in cap on W side 16" Oak S35°E 96.90'

Nail & KC Remon. tag S. side 14" Oak N70°E 65.96' (m. 65.84')
Nail & KC Remon. tag E. side 20" Oak S30°W 104.67' (m. 104.71')
Nail & KC Remon. tag E. side 24" Oak N30°W 54.78' (m. 54.73')
Nail & KC Remon. tag W. side 22" Oak N25°E 111.37' (m. 111.28')
Nail & KC Remon. tag W. side 20" Oak S35°E 97.51' (m. 97.56')

The selected location is accepted by me and is generally accepted by professional surveyors as the best available evidence of the position of the original corner.

C. Description of monument for corner and accessories established to perpetuate locating the position of the corner:

G-4 Standard Kent County Monument

Nail & K.C. remon. tag on S side 14" Oak N 70° E 65.84'
Nail & K.C. remon. tag on E side 20" Oak S 30° W 104.71'
Nail & K.C. remon. tag on E side 24" Oak N 30° W 54.73'
Nail & K.C. remon. tag on W side 22" Oak N 25° E 111.28'
Nail & K.C. remon. tag on W side 20" Oak S 35° E 97.56'
Nail & K.C. remon. tag on E side 15" Oak S 52° W 161.85'
Nail & K.C. remon. tag on N side P. pole N 65° W 91.62'

On C/L of gravel road running E-W
C/L of bit. road running N-S, South 15' ±

Signed by [Signature] Date _____

WILLIAMS & WORKS

Surveyor's Michigan License No. 25854

