

MAY 28 2000

\$7.00
\$2.00

SECTION

LAND CORNER RECORDATION CERTIFICATE
Filing Requirement of Act 74, Mich. P.A. 1970
KENT COUNTY REMONUMENTATION

For corners in

Kent (County)	Located in: Oakfield Township	Corner Code #
1. Public Land Survey	T <u>9N</u> R <u>9W</u>	<u>J-5</u>
	T _____ R _____	_____
	T _____ R _____	_____
	T _____ R _____	_____
2. Property Controlling in Section	S _____ T _____ R _____	_____
	S _____ T _____ R _____	_____
3. Miscellaneous Property in Sec.	S _____ T _____ R _____	_____
	S _____ T _____ R _____	_____

REG. OF DEEDS

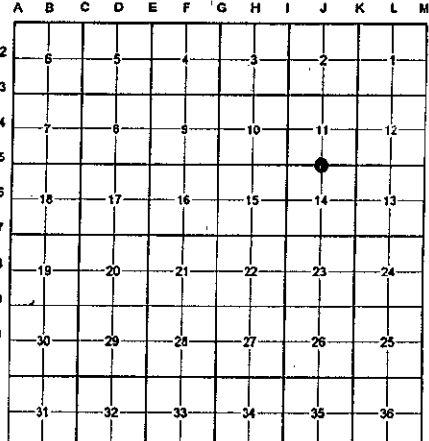
[Signature]

STATE OF MICHIGAN
COUNTY OF KENT
RECEIVED FOR RECORD
1999 DEC -8 AM 10:07

11567

Register of Deeds Stamp & File Number

- 4. Lot No. _____, Recorded Plat _____
- 5. Private Claims _____



I, Randy Kolehouse, in a field survey on March 16 19 99, do hereby certify that, under requirements of P.A. 74 Michigan P.A. of 1970, the corner points mentioned in lines 1 and 2 above were in conformance with regulations and rules therefore as required in the current manual of survey instructions of the United States Department of the interior, Bureau of Land Management or by a decree of a Court of Law and/or that the corner points mentioned in lines 3, 4 and 5 above were in conformance with the rules of the Michigan Board of Land Surveyors or by a Decree of a Court of Law; established, re-established, monumented, re-monumented, recovered, found as expressed below:

NOTE: Not more than 4 corners, all in the same town and range, may be recorded on this certificate.

A. Description of original monument and accessories and/or subsequent restoration:

J-5	1837	G.L.O. Notes	Cathcart	Set Post
	N/A	Witness Map	K.C. Surveyor	Iron
	1946	Survey	Williams & Works	Set Corner
	1985	L.C.R.C. #4151	Thomas Chettleburgh	Fnd. Conc. Monument / Set K.C. Monument
	1994	L.C.R.C. #7229	Glaza & Associates	K.C. Monument

P.A. 345 1990 KENT COUNTY
PEER APPROVED 10/28/99
CHAIRMAN [Signature]

This corner was originally approved by the Kent County Remonumentation Peer Group and monumented by Thomas Chettleburgh on 4/2/85 and was recorded per L.C.R.C. #4151.

B. Description of corner evidence found and/or method applied in restoring or reestablishing corner:
J-5 Found a Standard Kent County Monument 135' ± North of Old 14 Mile Road running East and West, on line of a fence line running East and West and a tree row running South, per L.C.R.C.'s #4151 and #7229 as set by Thomas Chettleburgh in place of concrete monument he found which checked the K.C. Surveyor's records.

L.C.R.C. #4151

L.C.R.C. #7229

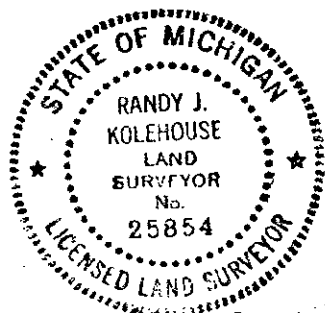
- Nail/tag in W side 12" Oak N2E 36.56'
- Nail/tag in E side 6" Oak N4E 3.65'
- Nail/tag in N side 23" Oak N88E 43.36'
- Nail/tag in N side 22" Oak S83W 53.83'
- Nail/tag in S side 9" Oak N77W 25.74'
- 5' Chain line fence with steel posts E & W

- K.C. remon. tag & nail in W side 14" Oak N02°E 36.55' (m. 36.54')
- K.C. remon tag & nail in E side 8" Oak N04°E 3.60' (m. 3.68')
- K.C. remon tag & nail in N side 24" Oak N88°E 43.24' (m. 43.20')
- K.C. remon tag & nail in N side 24" Oak S83°W 53.85' (m. 53.81')
- K.C. remon tag & nail in S side 12" Oak N77°W 25.76' (m. 25.73')
- 5' chain link fence with steel posts E & W

The selected location is accepted by me and is generally accepted by professional surveyors as the best available evidence of the position of the original corner.

C. Description of monument for corner and accessories established to perpetuate locating the position of the corner:

- J-5 Standard Kent County Monument
- Nail & K.C. remon. tag on W side 16" Oak N 02° E 36.54'
 - Nail & K.C. remon. tag on E side 8" Oak N 04° E 3.68'
 - Nail & K.C. remon. tag on N side 26" Oak N 88° E 43.20'
 - Nail & K.C. remon. tag on N side 26" Oak N 83° W 53.81'
 - Nail & K.C. remon. tag on S side 14" Oak N 77° W 25.73'
 - Iron Pipe South 32.95'
 - C/L of road running E-W, South 135' ±
 - On fence line running E-W
 - On tree row running S



Signed by Randy J. Kolehouse Date 10-29-99

WILLIAMS & WORKS

Surveyor's Michigan License No. 25854