

MAY 22 2000

SECTION

LAND CORNER RECORDATION CERTIFICATE
Filing Requirement of Act 74, Mich. P.A. 1970
KENT COUNTY REMONUMENTATION

For corners in

Table with columns: Kent (County), Located in: Oakfield Township, Corner Code #. Rows include Public Land Survey, Property Controlling in Section, Miscellaneous Property in Sec.

REG. OF DEEDS

Handwritten signature

STATE OF MICHIGAN
COUNTY OF KENT
RECEIVED FOR RECORD
1999 OCT 27 AM 8:39

11450

Register of Deeds Stamp & File Number

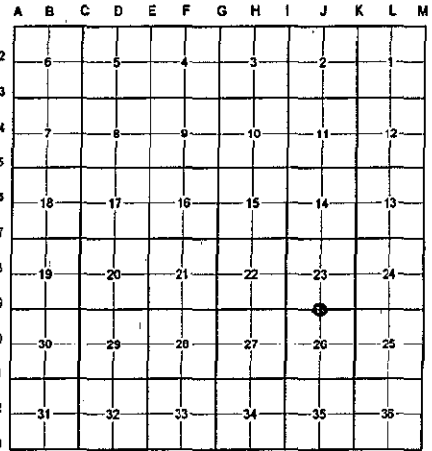
- 4. Lot No. Recorded Plat
5. Private Claims

I, Randy Kolehouse, in a field survey on March 25 19 99, do hereby certify that under requirements of P.A. 74 Michigan P.A. of 1970, the corner points mentioned in lines 1 and 2 above were in conformance with regulations and rules therefore as required in the current manual of survey instructions of the United States Department of the Interior, Bureau of Land Management or by a decree of a Court of Law and/or that the corner points mentioned in lines 3, 4 and 5 above were in conformance with the rules of the Michigan Board of Land Surveyors or by a Decree of a Court of Law; established, re-established, monumented, re-monumented, recovered, found as expressed below:

NOTE: Not more than 4 corners, all in the same town and range, may be recorded on this certificate.

A. Description of original monument and accessories and/or subsequent restoration:

Table with columns: J-9, 1837, 1984, 1985, 1994, G.L.O. Notes, L.C.R.C. #3728, #4153, #7231, Cathcart, All-Points Surveyors, Thomas Chettleburgh, Glaza & Associates, Set Post, 1/2" Iron Bar, Fnd. 1/2" Iron Bar / Set K.C. Monument, K.C. Monument



This corner was originally approved by the Kent County Remonumentation Peer Group and monumented by Thomas Chettleburgh on 4/2/85 and was recorded per L.C.R.C. #4153.

B. Description of corner evidence found and/or method applied in restoring or reestablishing corner:

J-9 Found a Standard Kent County Monument at the C/L "X" of 12 Mile Road (gravel) running East and West and Tully Avenue (gravel) running South, on line of a tree row running North, per L.C.R.C.'s #4153 and #7231 as set by Thomas Chettleburgh in place of a 1/2" iron bar he found which checked L.C.R.C. #3728.

L.C.R.C. #4153

Nail/tag in NE side 33" Oak S48E 33.33'
Nail/tag in SE side 48" Oak S31W 37.32'
Nail/tag in S side 8" Hickory N67W 56.45'

L.C.R.C. #7231

Nail & K.C. remon tag in NE side 36" Oak S48°E 33.33'
Nail & K.C. remon tag in SE side 54" Oak S31°W 37.32' (m. 37.33')
Nail & K.C. remon tag in S side 12" Hickory N67°W 56.35' (m. 36.38')
Nail & K.C. remon tag in N side 30' tree S80°E 102.78' (m. 102.75')
In C/L gravel road to the East, West and South

The selected location is accepted by me and is generally accepted by professional surveyors as the best available evidence of the position of the original corner.

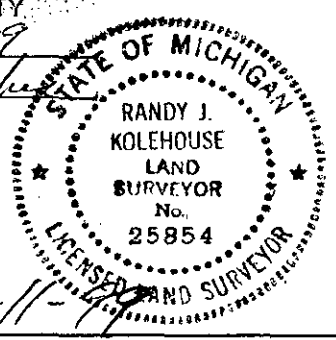
C. Description of monument for corner and accessories established to perpetuate locating the position of the corner:

J-9 Standard Kent County Monument

Nail & K.C. remon. tag on NE side 36" Oak S 48° E 33.33'
Nail & K.C. remon. tag on SE side 54" Oak S 31° W 37.33'
Nail & K.C. remon. tag on S side 12" Hickory N 67° W 56.38'
Nail & K.C. remon. tag on N side 30" Oak S 80° E 102.75'
Nail & K.C. remon. tag on N side 24" Oak S 70° W 126.94'
On C/L "X" of gravel roads running E-W & S
On tree row running N

P.A. 345 1990 KENT COUNTY

PEER APPROVED 7/29/99
CHAIRMAN



Signed by [Signature] Date 10-11-99

WILLIAMS & WORKS

Surveyor's Michigan License No. 25854