

MAY 22 2000

\$7.00  
\$2.00

LAND CORNER RECORDATION CERTIFICATE  
Filing Requirement of Act 74, Mich. P.A. 1970  
KENT COUNTY REMONUMENTATION

SECTION

For corners in

Kent (County)	Located in: Oakfield Township	Corner Code #
1. Public Land Survey	T <u>9N</u> R <u>9W</u>	<u>K-7</u>
	T _____ R _____	_____
	T _____ R _____	_____
	T _____ R _____	_____
2. Property Controlling in Section	S _____ T _____ R _____	_____
	S _____ T _____ R _____	_____
3. Miscellaneous Property in Sec.	S _____ T _____ R _____	_____
	S _____ T _____ R _____	_____

REG. OF DEEDS

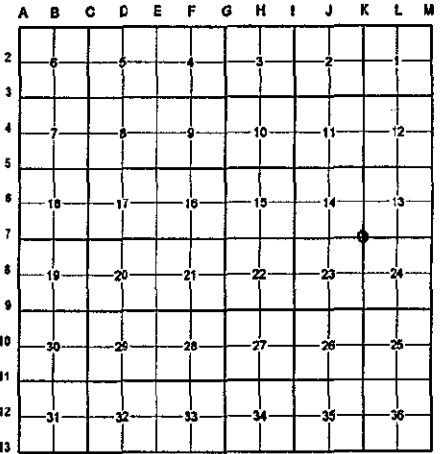
*[Signature]*

STATE OF MICHIGAN  
COUNTY OF KENT  
RECEIVED FOR RECORD  
1999 DEC 21 AM 8:19

11653

Register of Deeds Stamp & File Number

4. Lot No. \_\_\_\_\_, Recorded Plat \_\_\_\_\_  
5. Private Claims \_\_\_\_\_



I, Randy Kolehouse, in a field survey on July 15 19 99, do hereby certify that under requirements of P.A. 74 Michigan P.A. of 1970, the corner points mentioned in lines 1 and 2 above were in conformance with regulations and rules therefore as required in the current manual of survey instructions of the United States Department of the interior, Bureau of Land Management or by a decree of a Court of Law and/or that the corner points mentioned in lines 3, 4 and 5 above were in conformance with the rules of the Michigan Board of Land Surveyors or by a Decree of a Court of Law; established, re-established, monumented, re-monumented, recovered, found as expressed below:

NOTE: Not more than 4 corners, all in the same town and range, may be recorded on this certificate.

A. Description of original monument and accessories and/or subsequent restoration:

K-7	1837	G.L.O. Notes	Cathcart	Set Post
	1943-63	Witness Map	K.C. Surveyor	Iron
	1983	L.C.R.C. #3335	Glaza & Associates	3/4" Iron
	1985	L.C.R.C. #4154	Thomas Chettleburgh	Fnd. 3/4" Iron Pipe / Set K.C. Monument
	1994	L.C.R.C. #7240	Glaza & Associates	K.C. Monument

P.A. 345 1990 KENT COUNTY  
PEER APPROVED 7/29/99  
CHAIRMAN [Signature]

This corner was originally approved by the Kent County Remonumentation Peer Group and monumented by Thomas Chettleburgh on 4/2/85 and was recorded per L.C.R.C. #4154.

B. Description of corner evidence found and/or method applied in restoring or reestablishing corner:

K-7 Found a Standard Kent County Monument 2.5' ± West of a fence line running South and 120' ± Southeast of water's edge of Little Blue Lake per L.C.R.C.'s #4154 and #7240 as set by Thomas Chettleburgh in place of a 5/8" iron pipe he found which checked L.C.R.C. #3335 and the K.C. Surveyor's records.

L.C.R.C. #4154

L.C.R.C. #7240

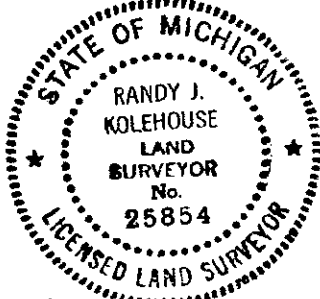
SW Cor Cottage (Conc Foundation) N23E 86.72'  
Nail/tag in SE side 31" Oak N63E 10.18'  
Nail/tag in E side 18" Hemlock S18E 60.69'  
NE Cor Cottage #10770 (Conc. Foundation) S72W 98.27'  
Nail/tag N side 5" Oak N90W 23.83'  
Nail/tag NW side Power Pole N32W 29.15'

SW corner cottage (concrete foundation) N23°E 86.72' (m. 87.13')  
Nail & K.C. remon tag in SE side 31" Oak N63°E 10.18' (m. 10.15')  
Nail & K.C. remon tag in E side 18" Hemlock S18°E 60.69' (m. 60.72')  
NE corner cottage #10770 (concrete foundation) S72°W 98.27' (m. 98.32')  
Nail & K.C. remon tag in N side 8" Oak N90°W 23.90' (m. 23.93')  
Nail & K.C. remon tag in NW side P. pole N32°W 29.15' (m. 29.23')

The selected location is accepted by me and is generally accepted by professional surveyors as the best available evidence of the position of the original corner.

C. Description of monument for corner and accessories established to perpetuate locating the position of the corner:

K-7 Standard Kent County Monument  
SW cor. cottage fndn. N 23° E 87.13'  
Nail & K.C. remon. tag on SE side 34" Oak N 63° E 10.15'  
Nail & K.C. remon. tag on E side 22" Hemlock S 18° E 60.72'  
Nail & K.C. remon. tag on N side 10" Oak N 90° W 23.93'  
Nail & K.C. remon. tag on NW side P. pole N 32° W 29.23'  
NE cor. cottage #10770 fndn. S 72° W 98.32'  
Fence line running S, East 2.5' ±



Signed by Randy J. Kolehouse  
WILLIAMS & WORKS

Date 10-22-99

Surveyor's Michigan License No. 25854