

**SURVEY &
REMONUMENTATION**

MAY 22 2000

*\$7.00
\$2.00*

SECTION LAND CORNER RECORDATION CERTIFICATE
Filing Requirement of Act 74, Mich. P.A. 1970
KENT COUNTY REMONUMENTATION

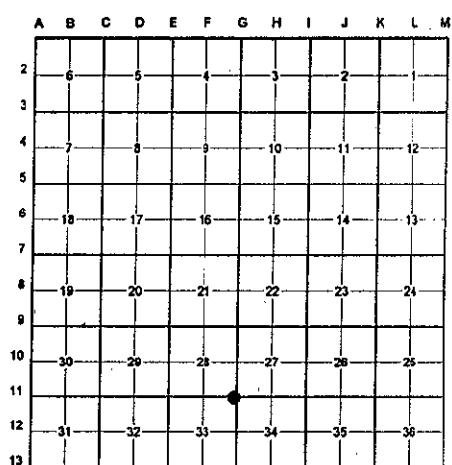
STATE OF MICHIGAN
COUNTY OF KENT
RECEIVED FOR RECORD
1999 DEC - 8 AM 10:06

For corners in

<u>Kent</u> (County)	Located in: <u>Oakfield</u> Township	Corner Code #
1. Public Land Survey	T <u>9N</u> R <u>9W</u>	Witness Mon.
	T _____ R _____	_____
	T _____ R _____	_____
	T _____ R _____	_____
2. Property Controlling in Section	S _____ T _____ R _____	West of G-II
	S _____ T _____ R _____	_____
3. Miscellaneous Property in Sec.	S _____ T _____ R _____	_____
	S _____ T _____ R _____	_____

REG. OF DEEDS
Handwritten Signature
"other # 5
Seq # 2
11558
Register of Deeds Stamp & File Number

4. Lot No. _____, Recorded Plat _____
5. Private Claims _____



I, Randy Kolehouse, in a field survey on March 16 19 99, do hereby certify that under requirements of P.A. 74 Michigan P.A. of 1970, the corner points mentioned in lines 1 and 2 above were in conformance with regulations and rules therefore as required in the current manual of survey instructions of the United States Department of the Interior, Bureau of Land Management or by a decree of a Court of Law and/or that the corner points mentioned in lines 3, 4 and 5 above were in conformance with the rules of the Michigan Board of Land Surveyors, or by a Decree of a Court of Law; established, re-established, monumented, re-monumented, recovered, found as expressed below:

NOTE: Not more than 4 corners, all in the same town and range, may be recorded on this certificate.

A. Description of original monument and accessories and/or subsequent restoration:

G-11 1837	G.L.O. Notes	Cathcart	Set Post
1949	Lewis Wabasis Park Plat L. 45 P. 34	N/A	Plat Monument
1993	L.C.R.C. #6824	Chris Marshall	4" Concrete Plat Monument
1997	L.C.R.C. #9689	Kirk Breitels	4" Concrete Plat Monument

P.A. 345 1990 KENT COUNTY
PEER APPROVED 7/29/99
CHAIRMAN Handwritten Signature

This corner was originally approved by the Kent County Remonumentation Peer Group in May of 1993 and was recorded per L.C.R.C. #6824.

B. Description of corner evidence found and/or method applied in restoring or reestablishing corner:
G-11 Found a 4" concrete plat monument (18" above ground) 10' ± East of bank top and 120' ± Northwest of end of Hull Lane per L.C.R.C.'s #6824 and #9689. Marshall found the plat monument at the Northwest corner of Lot 17 of Lewis Wabasis Park and held as the North line of Section 33.

L.C.R.C. #6824

L.C.R.C. #9689

Nail and Tag in W. side of 32" Cherry S 05°E 16.17'
Nail and Tag in E. side of 24" Oak N 00°E 17.84'
Nail and Tag in S. side of 6" Ash (6' above grade) S 80°E 19.13'
Nail and Tag in NE side of 4" Ash (5' above grade) S 35°E 19.79'
Nail and Tag in S. side of 8" Ash S 70°W 18.53'
Monument extends 18" above grade on the top of the hill
Approximately 120' NW of the end of the gravel road (Hull Lane)

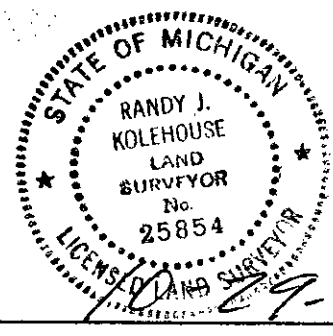
Nail & KC Remon. tag E. side 26" Oak N00°E 17.84' (m. 17.83')
Nail & KC Remon. tag S. side 8" Ash (6' high) S80°E 19.13' (m. 19.17')
Nail & KC Remon. tag NE side 6" Ash (5' high) S35°E 19.79' (m. 19.80')
Nail & KC Remon. tag S. side 10" Ash S70°W 18.60' (m. 18.56')
Monument extends 18" above grade on top of hill approx. 120' NW of the end of the gravel road (Hull Lane)

The selected location is accepted by me and is generally accepted by professional surveyors as the best available evidence of the position of the original corner.

C. Description of monument for corner and accessories established to perpetuate locating the position of the corner:
G-11 4" Concrete Plat Monument

- Nail & K.C. remon. tag on E side 26" Oak N 00° E 17.83'
- Nail & K.C. remon. tag on S side 8" Ash (6' high) S 80° E 19.17'
- Nail & K.C. remon. tag on NE side 6" Ash (5' high) S 35° E 19.80'
- Nail & K.C. remon. tag on S side 10" Ash S 70° W 18.56'
- Nail & K.C. remon. tag on W side 8" Ash S 10° W 15.06'

See Drawing - L.C.R.C. #6824B



Signed by Randy J. Kolehouse Date _____
WILLIAMS & WORKS

Surveyor's Michigan License No. 25854