

SURVEY & REMONUMENTATION

\$7.00 MAR 08 1999
\$2.00

KENT COUNTY REMONUMENTATION

SECTION

LAND CORNER RECORDATION CERTIFICATE
Filing Requirement of Act 74, Mich. P.A. 1970

For corners in

KENT COUNTY

(County)

Located In:

Corner Code #

1. Public Land Survey

~~T 9N R 11W~~ ~~M 1~~
T R common with
~~T 9N R 10W~~ ~~A-1~~
~~T 10N R 11W~~ ~~M 13~~
~~T 10N R 10W~~ ~~A 13~~
S T R
S T R
S T R

2. Property Controlling in Section

3. Miscellaneous Property in Sec.

4. Lot No. _____, Recorded Plat _____
5. Private Claims _____

I, Kirk Breitels, in a field survey on Feb. 10, 1998 do hereby state that under requirements of P.A. 74, Michigan P.A. of 1970, the corner points mentioned in lines 1 and 2 above were in conformance with regulations and rules therefore as required in the current manual of survey instructions of the United States Department of the Interior, Bureau of Land Management or by a decree of a Court of Law and/or that the corner points mentioned in lines 3, 4 and 5 above were in conformance with the rules of the Michigan Board of Land Surveyors or by a Decree of a Court of Law; established, re-established, monumented, recovered, found as expressed below:

NOTE: Not more than 2 corners, all in the same town and range, may be recorded on this certificate.

A. Description of original monument and accessories and/or subsequent restoration:

M-1 1837 GLO Brookfield Set Post
1956 Kent Co. Wits Stone
1959-68 MSHD "X" in pavement
1973 LCRC #479 Spicer PK Nail
1982 LCRC #2810 Jonker Set Kent County Monument
1990 LCRC #5624 Marschall Kent County Monument

The position of this corner was previously approved by the Kent County Remonumentation Peer Group, monumented by Robert J. Jonker on 4-1-82 and was recorded per LCRC #2810.

B. Description of corner evidence found and/or method applied in restoring or reestablishing corner:

M-1 Found Kent County Monument (Harrison) per witnesses from above LCRC as set by Robert J. Jonker in place of the PK Nail he found. Said PK Nail checks with Kent Co. Wits., MSHD, and LCRC #479.

| | |
|---|---|
| LCRC #2810 | LCRC #5624 |
| Nail & Remon. tag P. Pole N45°W 76.65' | Nail & Remon. tag P. Pole N45°W 76.59' |
| Nail & Remon. tag T. Pole S70°W 58.20' | Nail & Remon. tag P. Pole N70°E 145.20' |
| Nail & Remon. tag P. Pole N70°E 148.82' | Face of 10"x10" Util. Ped S55°E 66.93' |
| Face of Util. Ped. at base S55°E 66.97' | Nail & Remon. tag 20" Maple N15°W 125.26' |
| C/L "X" of int. is 1' East ± | Nail & Remon. tag 30" Maple N80°E 147.39' |
| | NE cor. Hse. #13189 S31°W 137.24' |

The selected location is accepted by me and is generally accepted by professional surveyors as the best available evidence of the position of the original corner.

C. Description of monument for corner and accessories established to perpetuate locating the position of the corner:

M-1 Standard Kent County Monument

| | |
|---|---------------|
| Nail & KC Remon. tag SW side P. Pole | N45°W 76.62' |
| Nail & KC Remon. tag N. side P. Pole | N70°E 145.20' |
| Nail & KC Remon. tag E. side 24" Maple | N15°W 125.26' |
| Nail & KC Remon. tag S. side 34" Maple | N80°E 147.39' |
| NE corner foundation of house #13189 | S31°W 137.28' |
| Concrete Monument (2 nd order GPS point) | S40°E 73.84' |
| C/L of "X" pavement is 1' East ± | |

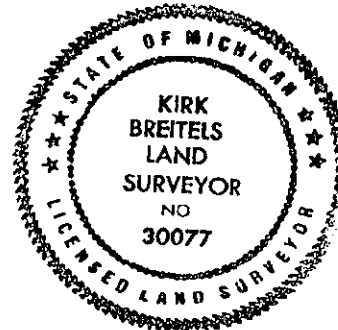
STATE OF MICHIGAN
COUNTY OF KENT
REGISTERED FOR RECORD
98 MAR -5 AM 9:35
REG. OF DEEDS
Lucy Standa

10576

Register of Deeds Stamp & File Number

| | | | | | | | | | | | | | |
|----|----|---|----|---|----|---|----|---|----|---|----|---|---|
| | A | B | C | D | E | F | G | H | I | J | K | L | M |
| 1 | | | | | | | | | | | | | |
| 2 | 6 | | 5 | | 4 | | 3 | | 2 | | 1 | | |
| 3 | | | | | | | | | | | | | |
| 4 | 7 | | 8 | | 9 | | 10 | | 11 | | 12 | | |
| 5 | | | | | | | | | | | | | |
| 6 | 10 | | 17 | | 16 | | 15 | | 14 | | 13 | | |
| 7 | | | | | | | | | | | | | |
| 8 | 19 | | 20 | | 21 | | 22 | | 23 | | 24 | | |
| 9 | | | | | | | | | | | | | |
| 10 | 30 | | 29 | | 28 | | 27 | | 26 | | 25 | | |
| 11 | | | | | | | | | | | | | |
| 12 | 31 | | 32 | | 33 | | 34 | | 35 | | 36 | | |
| 13 | | | | | | | | | | | | | |

P.A. 345 1990 KENT COUNTY
PEER APPROVED 2/19/98
CHAIRMAN Harry Hubert



Signed by *Kirk Breitels*

Date 2/19/98

Surveyor's Michigan License No. 30077