

SURVEY & REMONUMENTATION

KENT COUNTY REMONUMENTATION

\$7.00 MAR 08 1999

\$2.00

SECTION

LAND CORNER RECORDATION CERTIFICATE
Filing Requirement of Act 74, Mich. P.A. 1970

For corners in

KENT COUNTY

Located In:

Corner Code #

1. Public Land Survey

~~T 9N R 11W~~ ~~M-2~~
Common with
T 9N R 10W A-2

2. Property Controlling in Section

S T R
S T R
S T R
S T R

3. Miscellaneous Property in Sec.

4. Lot No. _____, Recorded Plat _____
5. Private Claims _____

I, Kirk Breitels, in a field survey on Jan. 23, 1998 do hereby state that under requirements of P.A. 74, Michigan P.A. of 1970, the corner points mentioned in lines 1 and 2 above were in conformance with regulations and rules therefore as required in the current manual of survey instructions of the United States Department of the Interior, Bureau of Land Management or by a decree of a Court of Law and /or that the corner points mentioned in lines 3, 4 and 5 above were in conformance with the rules of the Michigan Board of Land Surveyors or by a Decree of a Court of Law; established, re-established, monumented, recovered, found as expressed below:

NOTE: Not more than 2 corners, all in the same town and range, may be recorded on this certificate.

A. Description of original monument and accessories and/or subsequent restoration:

M-2	1837	GLO	Brookfield	Set Post
	1959	Kent Co. Wits		Leaded Stone & Iron
	1978	LCRC #1135	VanKooten	PK Nail
	1983	LCRC #3418	Glaza	No desc. - witnesses given
	1982	LCRC #2812	Jonker	Set Kent County Monument
	1994	LCRC #7059	Byl	Kent County Monument

P.A. 345 1990 KENT COUNTY

PEER APPROVED 2/19/98
CHAIRMAN [Signature]

The position of this corner was previously approved by the Kent County Remonumentation Peer Group, monumented by Robert J. Jonker on 3-31-82 and was recorded per LCRC #2812.

B. Description of corner evidence found and/or method applied in restoring or reestablishing corner:

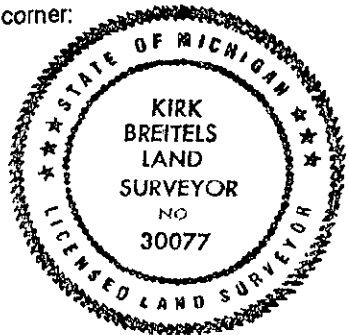
M-2 Found Kent County Monument (Harrison) per witnesses from above LCRC as set by Robert J. Jonker in place of the PK Nail over a 2nd PK Nail he found. Both PK Nail's check with LCRC #1135, Kent Co. Wits. and LCRC #3418 witnesses are gone.

LCRC #2812	Nail & Remon. tag 10" Hickory	S52°E 63.42'	LCRC #7059	Nail & Remon. tag 12" Hickory	S52°E 63.44'
	Nail & Remon. tag 6" Hickory	S70°W 81.15'		Nail & Remon. tag 10" Hickory	S70°W 81.05'
	Nail & Remon. tag P. Pole	N60°W 83.72'		Nail & Remon. tag P. Pole	N60°W 83.72'
	NE corner conc. headwall	N74°E 44.39'		Nail & Remon. tag wood post	N60°E 44.62'
	Nail & Remon. tag			C/L "X" intersection is 2' E. & 5' S.	

The selected location is accepted by me and is generally accepted by professional surveyors as the best available evidence of the position of the original corner.

C. Description of monument for corner and accessories established to perpetuate locating the position of the corner:

M-2 Standard Kent County Monument		
Nail & KC Remon. tag SW side 14" Hickory	S52°E	63.44'
Nail & KC Remon. tag S. side 12" Hickory	S70°W	81.05'
Nail & KC Remon. tag S. side Tel. Stump Pole	N60°W	83.72'
Nail & KC Remon. tag S. side P. Pole	N65°W	82.76'
Nail & KC Remon. tag N. side 10" Elm	N80°E	93.61'
C/L "X" intersection is 2' E. & 5' S.		



Signed by [Signature]
Surveyor's Michigan License No. 30077

Date 2/19/98

REG. OF DEEDS
[Signature]
98 MAR -5 AM 8:35
STATE OF MICHIGAN
COUNTY OF KENT
RECEIVED FOR RECORD
10577
Register of Deeds Stamp & File Number

	A	B	C	D	E	F	G	H	I	J	K	L	M
1													
2	6		5		4		3		2		1		
3													
4	7		8		9		10		11		12		
5													
6	18		17		16		15		14		13		
7													
8	19		20		21		22		23		24		
9													
10	30		29		28		27		26		25		
11													
12	31		32		33		34		35		36		
13													