

SURVEY & REMONUMENTATION

KENT COUNTY REMONUMENTATION

LAND CORNER RECORDATION CERTIFICATE
Filing Requirement of Act 74, Mich. P.A. 1970

MAR 08 1999

\$7.00
\$2.00

SECTION

For corners in
KENT COUNTY

Located in: Corner Code #

- | | | |
|------------------------------------|---|-------------|
| 1. Public Land Survey | T <u>9N</u> R <u>11W</u> M <u>7</u> | |
| | T <u> </u> R <u> </u> | common with |
| | T <u>9N</u> R <u>10W</u> | A-7 |
| | T <u> </u> R <u> </u> | |
| 2. Property Controlling in Section | S <u> </u> T <u> </u> R <u> </u> | |
| | S <u> </u> T <u> </u> R <u> </u> | |
| 3. Miscellaneous Property in Sec. | S <u> </u> T <u> </u> R <u> </u> | |
| | S <u> </u> T <u> </u> R <u> </u> | |

4. Lot No. _____, Recorded Plat _____
5. Private Claims _____

I, Kirk Breitels, in a field survey on Jan. 28, 1998 do hereby state that under requirements of P.A. 74, Michigan P.A. of 1970, the corner points mentioned in lines 1 and 2 above were in conformance with regulations and rules therefore as required in the current manual of survey instructions of the United States Department of the Interior, Bureau of Land Management or by a decree of a Court of Law and/or that the corner points mentioned in lines 3, 4 and 5 above were in conformance with the rules of the Michigan Board of Land Surveyors or by a Decree of a Court of Law; established, re-established, monumented, recovered, found as expressed below:

NOTE: Not more than 2 corners, all in the same town and range, may be recorded on this certificate.

A. Description of original monument and accessories and/or subsequent restoration:

- | | | | | |
|-----|------|---------------|------------|--------------------------------------|
| M-7 | 1837 | GLO | Brookfield | Set Post |
| | 1963 | Kent Co. Wits | | Mon. Box |
| | 1973 | LCRC #460 | Spicer | 1/2" Iron in Mon. Box |
| | 1975 | LCRC #786 | Bonnema | 1/2" Solid Rod in Mon. Box |
| | 1981 | LCRC #1983 | Jonker | Set Kent County Monument in Mon. Box |
| | 1994 | LCRC #7064 | Byl | Kent County Monument in Mon. Box |

The position of this corner was previously approved by the Kent County Remonumentation Peer Group, monumented by Robert J. Jonker on 8-25-81 and was recorded per LCRC #1983.

B. Description of corner evidence found and/or method applied in restoring or reestablishing corner:

M-7 Found Kent County Monument (Harrison) per witnesses from above LCRC as set by Robert J. Jonker in place of the 1/2" Copper Conduit he found inside a Mon. Box. Said Copper Conduit checks with Kent Co. Wits. and LCRC's #460 & #786.

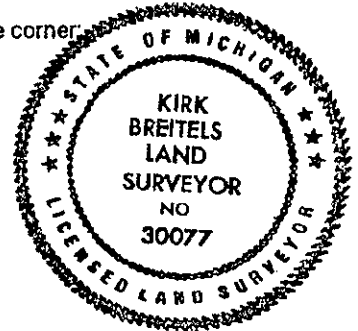
LCRC #1983	LCRC #
Nail & Remon. tag Guy Pole S48°W 60.86'	Nail & Remon. tag Guy Pole N60°E 65.25'
Nail & Remon. tag Guy Pole N60°E 65.25'	Nail & Remon. tag 36" Oak N23°W 103.59'
Nail & Remon. tag Tw. 12" Ch. Elm S41°E 115.48'	Nail & Remon. tag P. Pole S45°W 90.50'
Nail & Remon. tag 30" Oak N23°W 103.68'	Top fiber optic cable marker S40°E 76.25'

C/L traveled way is East 9'

The selected location is accepted by me and is generally accepted by professional surveyors as the best available evidence of the position of the original corner.

C. Description of monument for corner and accessories established to perpetuate locating the position of the corner:

- | | |
|---|---------------------------|
| M-7 Standard Kent County Monument in Mon. Box | |
| Nail & KC Remon. tag NW side Guy Pole N60°E 65.25' | |
| Nail & KC Remon. tag SW side 36" Oak N23°W 103.59' | |
| Nail & KC Remon. tag SE side P. Pole S45°W 76.25' | P. Pole wit. and |
| Top fiber optic marker (wobbles) S40°E 90.5' ± | Fiber marker wit. |
| Concrete Monument (2 nd order GPS point) S55°E 153.70' | were reversed previously. |
| C/L N-S asphalt road is East 9' ± | |



Signed by Kirk Breitels
Surveyor's Michigan License No. 30077

Date 2/19/98

STATE OF MICHIGAN
COUNTY OF KENT
RECEIVED FOR RECORD
98 MAR -5 AM 8:35
REG. OF DEEDS
Lucy Spauld

10582
Register of Deeds Stamp & File Number

A	B	C	D	E	F	G	H	I	J	K	L	M
1												
2	6		5		4		3		2		1	
3												
4	7		8		9		10		11		12	
5												
6	10		17		16		15		14		13	
7												
8	19		20		21		22		23		24	
9												
10	30		29		28		27		26		25	
11												
12	31		32		33		34		35		36	
13												

P.A. 345 1900 KENT COUNTY
PEER APPROVED 2/19/98
CHAIRMAN Harry Hahese