

**SURVEY & REMONUMENTATION**

MAR 08 1999

KENT COUNTY REMONUMENTATION

\$7.00  
\$2.00

SECTION

**LAND CORNER RECORDATION CERTIFICATE**  
Filing Requirement of Act 74, Mich. P.A. 1970

STATE OF MICHIGAN  
COUNTY OF KENT  
RECEIVED FOR RECORD  
98 MAR -5 AM 8:35  
REG. OF DEEDS  
*Lucy Staveland*

For corners in

KENT COUNTY

(County)

Located In:

Corner Code #

- |                                    |            |             |
|------------------------------------|------------|-------------|
| 1. Public Land Survey              | T 9N R 11W | M 11        |
|                                    | T R        | common with |
|                                    | T 9N R 10W | A-11        |
|                                    | T R        |             |
| 2. Property Controlling in Section | S T R      |             |
|                                    | S T R      |             |
| 3. Miscellaneous Property in Sec.  | S T R      |             |
|                                    | S T R      |             |

10584

Register of Deeds Stamp & File Number

4. Lot No. \_\_\_\_\_, Recorded Plat \_\_\_\_\_  
5. Private Claims \_\_\_\_\_

I, Kirk Breitels, in a field survey on Feb. 17, 1998 do hereby state that under requirements of P.A. 74, Michigan P.A. of 1970, the corner points mentioned in lines 1 and 2 above were in conformance with regulations and rules therefore as required in the current manual of survey instructions of the United States Department of the Interior, Bureau of Land Management or by a decree of a Court of Law and /or that the corner points mentioned in lines 3, 4 and 5 above were in conformance with the rules of the Michigan Board of Land Surveyors or by a Decree of a Court of Law; established, re-established, monumented, recovered, found as expressed below:

NOTE: Not more than 2 corners, all in the same town and range, may be recorded on this certificate.

A	B	C	D	E	F	G	H	I	J	K	L	M
1												
2	6	5	4	3	2	1						
3												
4	7	8	9	10	11	12						
5												
6	18	17	16	15	14	13						
7												
8	19	20	21	22	23	24						
9												
10	30	29	28	27	26	25						
11												
12	31	32	33	34	35	36						
13												

A. Description of original monument and accessories and/or subsequent restoration:

- |           |                |            |                                      |
|-----------|----------------|------------|--------------------------------------|
| M-11 1837 | GLO            | Brookfield | Set Post                             |
|           | Kent Co. Wits. |            | "+" cut in pavement                  |
| 1973      | LCRC #484      | Spicer     | 1/2" Iron in Mon. Box                |
| 1976      | LCRC #928      | McCloskey  | Monument                             |
| 1981      | LCRC #1987     | Jonker     | Set Kent County Monument in Mon. Box |
| 1994      | LCRC #7068     | Byl        | Kent County Monument in Mon. Box     |

P.A. 345 1990 KENT COUNTY  
PEER APPROVED 2/19/98  
CHAIRMAN *Harry Stukes*

The position of this corner was previously approved by the Kent County Remonumentation Peer Group, monumented by Robert J. Jonker on 8-26-81 and was recorded per LCRC #1987.

B. Description of corner evidence found and/or method applied in restoring or reestablishing corner:

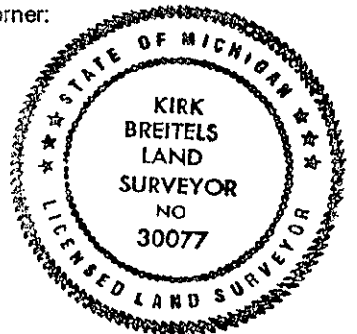
M-11 Found Kent County Monument (Harrison) per witnesses from above LCRC as set by Robert J. Jonker in place of the 3/4" Solid Iron he found inside a Mon. Box. Said Iron checks with Kent Co. Wits. and LCRC's #484 & #928.

- |            |   |  |
|------------|---|--|
| LCRC #1987 | Nail & Remon. tag P. Pole S15°W 121.90' | Nail & Remon. tag P. Pole N88°W 53.76'   |
|            | Nail & Remon. tag P. Pole N88°W 53.70'  | Nail & Remon. tag P. Pole N10°W 236.10'  |
|            | Nail & Remon. tag P. Pole N10°W 235.94' | Nail & Remon. tag Lt. Pole S15°W 121.41' |
|            | C/L concrete pavement is East 2.55'     | C/L concrete pavement is East 2.55'      |

The selected location is accepted by me and is generally accepted by professional surveyors as the best available evidence of the position of the original corner.

C. Description of monument for corner and accessories established to perpetuate locating the position of the corner:

- M-11 Standard Kent County Monument in Mon. Box
- |                                       |               |
|---------------------------------------|---------------|
| Nail & KC Remon. tag N. side P. Pole  | N88°W 53.76'  |
| Nail & KC Remon. tag E. side P. Pole  | N10°W 235.98' |
| Nail & KC Remon. tag E. side Lt. Pole | S15°W 121.35' |
| Capped Rerod (Byl)                    | S15°E 159.56' |
| Chiseled "X" top N. end conc. culvert | S30°E 109.79' |
| C/L concrete pavement is East 2.55'   |               |



Signed by *Kirk Breitels*  
Surveyor's Michigan License No. 30077

Date 2/19/98