

SURVEY & REMONUMENTATION

\$7.00
\$2.00

MAR 08 1999

KENT COUNTY REMONUMENTATION

LAND CORNER RECORDATION CERTIFICATE
Filing Requirement of Act 74, Mich. P.A. 1970

SECTION

For corners in

KENT COUNTY
(County)

Located in:

Corner Code #

- 1. Public Land Survey T 2N R 11W M-12
T _____ R _____ Common with
T 2N R 10W A-12
T _____ R _____
- 2. Property Controlling in Section S _____ T _____ R _____
- 3. Miscellaneous Property in Sec. S _____ T _____ R _____

STATE OF MICHIGAN
COUNTY OF KENT
RECEIVED FOR RECORD

98 MAR -5 AM 8:35

REG. OF DEEDS

10585

Register of Deeds Stamp & File Number

- 4. Lot No. _____, Recorded Plat _____
- 5. Private Claims _____

I, Kirk Breitels, in a field survey on Jan. 14, 1998 do hereby state that under requirements of P.A. 74, Michigan P.A. of 1970, the corner points mentioned in lines 1 and 2 above were in conformance with regulations and rules therefore as required in the current manual of survey instructions of the United States Department of the Interior, Bureau of Land Management or by a decree of a Court of Law and/or that the corner points mentioned in lines 3, 4 and 5 above were in conformance with the rules of the Michigan Board of Land Surveyors or by a Decree of a Court of Law; established, re-established, monumented, recovered, found as expressed below:

NOTE: Not more than 2 corners, all in the same town and range, may be recorded on this certificate.

	A	B	C	D	E	F	G	H	I	J	K	L	M
1													
2	6	5	4	3	2	1							
3													
4	7	8	9	10	11	12							
5													
6	18	17	16	15	14	13							
7													
8	19	20	21	22	23	24							
9													
10	30	29	28	27	26	25							
11													
12	31	32	33	34	35	36							
13													

A. Description of original monument and accessories and/or subsequent restoration:

- M-12 1837 GLO Brookfield Set Post
- Kent Co. Wits Stone - Mon. Box
- 1973 LCRC #480, #484 Spicer 1/2" Iron in Mon. Box
- 1981 LCRC #1988 Jonker Set Kent County Monument in Mon. Box
- 1994 LCRC #7069 Byl Kent County Monument in Mon. Box

P.A. 345 1990 KENT COUNTY
PEER APPROVED 2/19/98
CHAIRMAN [Signature]

The position of this corner was previously approved by the Kent County Remonumentation Peer Group, monumented by Robert J. Jonker on 8-26-81 and was recorded per LCRC #1988.

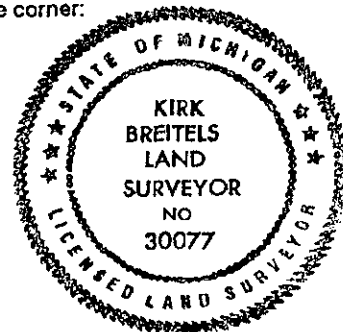
B. Description of corner evidence found and/or method applied in restoring or reestablishing corner:

- M-12 Found Kent County Monument (Harrison) per witnesses from above LCRC as set by Robert J. Jonker in place of the 1/2" Solid Iron he found inside a Mon. Box. Said Iron checks with Kent Co. Wits. and LCRC's #480 & #484.
- LCRC #1988 LCRC #7069
- Nail & Remon. tag P. Pole N47°E 34.62' Nail & Remon. tag P. Pole N47°E 34.73'
- SE cor. bottom church step N45°W 76.10' SE cor. bottom church step N45°W 76.10'
- C/L steel fence post N89°W 44.12' C/L steel fence post N89°W 44.12'
- SW cor. conc. block bldg. N77°E 73.70' SW cor. bldg. (siding) N77°E 73.73'
- Face of North gate post S36°W 89.60' Face of North gate post S36°W 89.58'

The selected location is accepted by me and is generally accepted by professional surveyors as the best available evidence of the position of the original corner.

C. Description of monument for corner and accessories established to perpetuate locating the position of the corner:

- M-12 Standard Kent County Monument in Mon. Box
- Nail & KC Remon. tag NW side P. Pole N47°E 34.73'
- SE corner bottom step of bldg. N45°W 76.10'
- C/L steel fence post N89°W 44.07'
- SW corner bldg. (siding) N77°E 73.65'
- Face of North gate post S36°W 89.58'



Signed by Kirk Breitels
Surveyor's Michigan License No. 30077

Date 2/19/98