

\$7.00  
\$2.00

MAY 22 2000

SECTION

LAND CORNER RECORDATION CERTIFICATE  
Filing Requirement of Act 74, Mich. P.A. 1970  
KENT COUNTY REMONUMENTATION

REG. OF DEEDS

*[Signature]*

STATE OF MICHIGAN  
COUNTY OF KENT  
RECEIVED FOR RECORD  
1999 OCT 15 AM 8:03

For corners in

Kent (County)	Located in: Courtland Township	Corner Code #
1. Public Land Survey	T <u>9N</u> R <u>10W</u>	<u>C-7</u>
	T _____ R _____	_____
	T _____ R _____	_____
	T _____ R _____	_____
2. Property Controlling in Section	S _____ T _____ R _____	_____
	S _____ T _____ R _____	_____
3. Miscellaneous Property in Sec.	S _____ T _____ R _____	_____
	S _____ T _____ R _____	_____

11282

Register of Deeds Stamp & File Number

4. Lot No. \_\_\_\_\_, Recorded Plat \_\_\_\_\_  
5. Private Claims \_\_\_\_\_

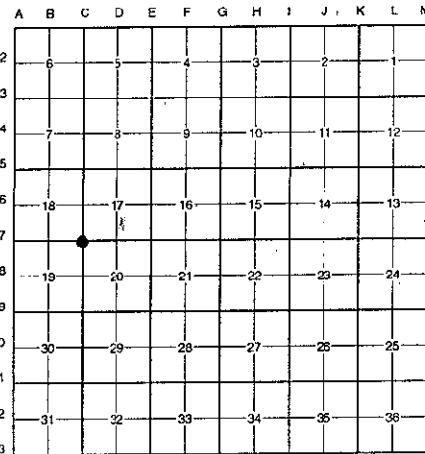
I, Randy Kolehouse, in a field survey on January 6 19 99, do hereby certify that under requirements of P.A. 74 Michigan P.A. of 1970, the corner points mentioned in lines 1 and 2 above were in conformance with regulations and rules therefore as required in the current manual of survey instructions of the United States Department of the interior, Bureau of Land Management or by a decree of a Court of Law and/or that the corner points mentioned in lines 3, 4 and 5 above were in conformance with the rules of the Michigan Board of Land Surveyors or by a Decree of a Court of Law; established, re-established, monumented, re-monumented, recovered, found as expressed below:

NOTE: Not more than 4 corners, all in the same town and range, may be recorded on this certificate.

A. Description of original monument and accessories and/or subsequent restoration:

C-7	1837	G.L.O. Notes	Cathcart	Set Post
	1935	Witness Map	K.C. Surveyor	Iron
	1975	L.C.R.C. #881	Medema, Van Kooten & Assoc.	Monument Box
	1980	L.C.R.C. #1335	William Byl	Monument Box
	1982	L.C.R.C. #2986	Jonker Land Survey	Fnd. 1" Iron in Mon. Box / Set K.C. Monument
	1988	L.C.R.C. #4802	Olson, Meyer & May	K.C. Monument

P.A. 345 1990 KENT COUNTY  
PEER APPROVED 2/25/99  
CHAIRMAN [Signature]



This corner was originally approved by the Kent County Remonumentation Peer Group and monumented by Rob Jonker on 7/8/82 and was recorded per L.C.R.C. #2986.

B. Description of corner evidence found and/or method applied in restoring or reestablishing corner:

C-7 Found a Standard Kent County Monument 1.0' North of the C/L of 13 Mile Road (bit.) running East and West and 3.0' East of Courtland Avenue (bit.) running South per L.C.R.C.'s #2986 and #4802 as set by Rob Jonker in place of a 1" iron he found at grade in a monument box over a 1/2" rod over an 8"x12"x18" pointed stone 12" below grade which checked L.C.R.C.'s #1335, #881 and the K.C. Surveyor's records. Rob Jonker removed irons, stone and monument box.

L.C.R.C. #2986

L.C.R.C. #4802

Remon. tag on S side 12" Oak N80°W 89.90'  
Remon. tag on S side 9" Elm N60°E 48.28'

Remon tag & nail on S sde 14" Oak N 80 W 89.88'  
Remon tag & nail on S sde 11" Elm N 60 E 48.25'

The selected location is accepted by me and is generally accepted by professional surveyors as the best available evidence of the position of the original corner.

C. Description of monument for corner and accessories established to perpetuate locating the position of the corner:

C-7 Standard Kent County Monument

- Nail & K.C. remon. tag on S side 16" Elm N 60° E 48.25'
- Nail & K.C. remon. tag on W side P. pole N 10° E 51.25'
- Nail & K.C. remon. tag on S side 14" Oak N 80° W 89.83'
- Top C/L N end 8" C.M.P. S 20° W 91.48'
- C/L of bit. road running E-W, South 1.0'
- C/L of bit. road running S, West 3.0'



Signed by Randy J. Kolehouse

Date 3/30/99

Surveyor's Michigan License No. 25854