

SURVEY &
MONUMENTATION

KENT COUNTY REMONUMENTATION

JAN 24 1996

LAND CORNER RECORDATION CERTIFICATE

COMMISSION Filing Requirement of Act 74, Mich. P.A. 1970

For corners in
KENT COUNTY
(County)

Located In:

Corner Code #

1. Public Land Survey	T	<u>9N</u>	R	<u>10W</u>	<u>E-5</u>
	T	_____	R	_____	_____
	T	_____	R	_____	_____
	T	_____	R	_____	_____
2. Property Controlling in Section	S	_____	T	_____	_____
	S	_____	T	_____	_____
3. Miscellaneous Property in Section	S	_____	T	_____	_____
	S	_____	T	_____	_____

STATE OF MICHIGAN
COUNTY OF KENT
RECEIVED FOR RECORD
95 OCT 24 PM 4:13
REG. OF DEEDS
Lucy Spang

8726

Register of Deeds Stamp & File Number

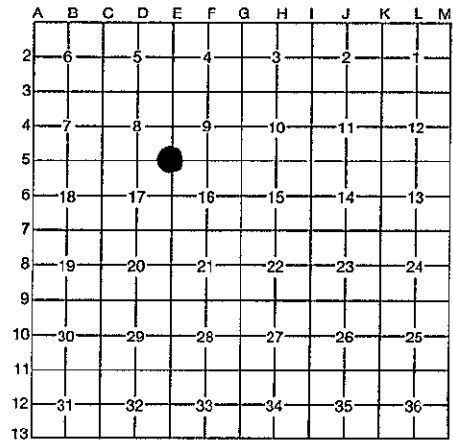
4. Lot No. _____, Recorded Plat _____
5. Private Claims _____

Kirk Breitels

Aug. 15, 1995

I, _____, in a field survey on _____, 1995, do hereby certify that under requirements of P.A. 74, Michigan P.A. of 1970, the corner points mentioned in lines 1 and 2 above were in conformance with regulations and rules therefore as required in the current manual of survey instructions of the United States Department of the Interior, Bureau of Land Management or by a decree of a Court of Law and/or that the corner points mentioned in lines 3, 4 and 5 above were in conformance with the rules of the Michigan Board of Professional Surveyors or by a Decree of a Court of Law; established, re-established, monumented, re-monumented, recovered, found as expressed below:

NOTE: Not more than 4 corners, all in the same town and range, may be recorded on this certificate.



A. Description of original monument and accessories and/or subsequent restoration:

E-5	1837	GLO Cathcart	Set Post	1963	Kent Co. Wit. Mon. Box
	1899	Williams & Works	Stake/Stones	1986-90	Surveys Hackbardt Mon. Box
	1940	Williams & Works	Pt. by wits.		MBT Pole N45°W 63.25'
	1963	MDSH	3/4" Pipe in Conc. Mon.		SW cor. Fnd. N40°E 109.40'
			28" Hickory N65°E 60.40'		C.P. S45°E 92.0'
			Tel. Pole S25°W 70.20'		
			Tel. Pole N65°W 93.15'		

P.A. 345 1990 KENT COUNTY
PEER APPROVED 8/24/95
CHAIRMAN *Harry Huber*

B. Description of corner evidence found and/or method applied in restoring or reestablishing corner:

E-5 Found PK Nail at road surface in center of large patch over Large Spike 4" below road surface. Intersection of M-57 and Shaner Ave. has been reconstructed recently (last 1-2 years). All witnesses from MDSH are gone. Said PK Nail/Large Spike fit 1986 Hackbardt witnesses ±. Also fits the following measurements (±) versus MDSH 1963 measurements and Williams & Works 1940 measurements.

- Meas. 2658.53' North - MDSH 2658.86'
- Meas. 2650.09' South - MDSH 2650.06'
- Meas. 2658.66' West - MDSH 2658.56' - 2659.3' Williams & Works 1940
- Meas. 2589.00' East - MDSH 2589.08'

The PK Nail over the Large Spike is accepted by me and is generally accepted by professional surveyors as the best available evidence of the position of the original corner.

C. Description of monument for corner and accessories established to perpetuate locating the position of the corner:

E-5	Set Standard Kent County Monument in place of PK Nail & Large Spike
	Set Nail & KC Remon. tag S. side Guy Pole N50°W 63.34'
	Set Nail & KC Remon. tag N. side P. Pole N10°W 165.12'
	SW corner house foundation N40°E 109.30'
	SE corner garage foundation N60°E 164.20'
	Set Nail & KC Remon. tag N. side P. Pole S65°E 183.52'
	Set Nail & KC Remon. tag W. side P. Pole S35°E 92.30'
	Set Nail & KC Remon. tag E. side 40" Maple S15°W 205.62'



Signed by *Kirk Breitels*

Date 10/20/95

Surveyor's Michigan License No. 30077