

SURVEY & REMONUMENTATION

\$7.00
\$2.00

MAR 03 1998

LAND CORNER RECORDATION CERTIFICATE
Filing Requirement of Act 74, Mich. P.A. 1970
KENT COUNTY REMONUMENTATION

STATE OF MICHIGAN
COUNTY OF KENT
RECEIVED FOR RECORD
97 NOV 14 AM 9:01
REG. OF DEEDS
Luis J. Koles

SECTION
For corners in Kent
(County)

Located in: Courtland Township Corner Code #

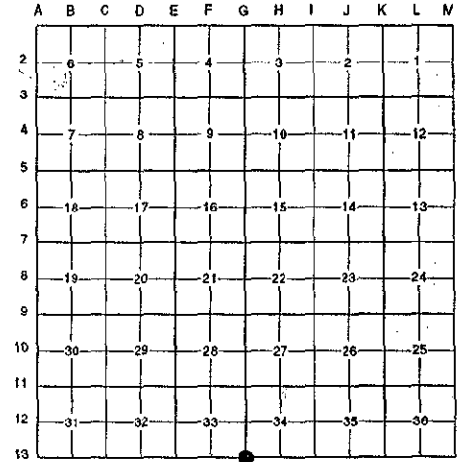
- | | | | |
|------------------------------------|-------------|--------------|-------------|
| 1. Public Land Survey | T <u>9N</u> | R <u>10W</u> | <u>G-13</u> |
| | T _____ | R _____ | _____ |
| | T _____ | R _____ | _____ |
| | T _____ | R _____ | _____ |
| 2. Property Controlling in Section | S _____ | T _____ | R _____ |
| | S _____ | T _____ | R _____ |
| 3. Miscellaneous Property in Sec. | S _____ | T _____ | R _____ |
| | S _____ | T _____ | R _____ |

10324

Register of Deeds Stamp & File Number

4. Lot No. _____, Recorded Plat _____
5. Private Claims _____

I, Randy Kolehose, in a field survey on July 14 19 97, do hereby certify that under requirements of P.A. 74 Michigan P.A. of 1970, the corner points mentioned in lines 1 and 2 above were in conformance with regulations and rules therefore as required in the current manual of survey instructions of the United States Department of the interior, Bureau of Land Management or by a decree of a Court of Law and/or that the corner points mentioned in lines 3, 4 and 5 above were in conformance with the rules of the Michigan Board of Land Surveyors or by a Decree of a Court of Law; established, re-established, monumented, re-monumented, recovered, found as expressed below:



NOTE: Not more than 4 corners, all in the same town and range, may be recorded on this certificate.

A. Description of original monument and accessories and/or subsequent restoration:

G-13	1831	G.L.O. Notes	Mullett	Set Post
	N/A	Witness Map	K.C. Surveyor	Stone
	1980	L.C.R.C. #1400	J. Reda	3/4" Iron Pipe
	1980	L.C.R.C. #2088	Nederveid & Jonker	3/4" Round Iron
	1983	L.C.R.C. #3494	Williams & Works	Set K.C. Monument
	1988	L.C.R.C. #4838	J. Bueche	K.C. Monument

P.A. 345 1990 KENT COUNTY
PEER APPROVED 7/24/97
CHAIRMAN *Randy Kolehose*

Note: This corner is not common with G-1, T8N, R10W.

This corner was originally approved by the Kent County Remonumentation Peer Group and monumented by Williams & Works on 7/28/83 and was recorded per L.C.R.C. #3494.

B. Description of corner evidence found and/or method applied in restoring or reestablishing corner:

G-13 Found a Standard Kent County Monument 44' ± North of the C/L of 10 Mile Road (bit.) running East and West and 100' ± West of the C/L of Bush Road (gravel) running South per L.C.R.C.'s #3494 and #4838 as set by Williams & Works at a point established using witnesses from L.C.R.C.'s #2088 and #1400.

L.C.R.C. #3494

L.C.R.C. #4838

Nail & KC.Remon.tag in N.side service & guy pole S.70°E. 74.39'	K.C. Remon tag & nail in N sde service & guy pole S 70 E 75.28'
Nail & KC.Remon.tag in NE'y side power pole N.29°W. 42.20'	K.C. Remon tag & nail in NE'y sde P pole N 2 W 42.20'
Brick cor. at SE cor.of garage to hse #7193 N.49°W. 99.32'	Brick cor at SE cor of garage to hse #7193 N 49 W 99.32'
Brick cor. at SW cor.of garage to hse #7193 N.60°W. 120.33'	Brick cor at SW cor of garage to hse #7193 N 60 W 120.33'
C/L Manhole S.79°W. 62.18'	C/L manhole S 79 W 62.18'

The selected location is accepted by me and is generally accepted by professional surveyors as the best available evidence of the position of the original corner.

C. Description of monument for corner and accessories established to perpetuate locating the position of the corner:

G-13 Standard Kent County Monument

- Nail & K.C. remon. tag on N side Service & Guy pole S 70° E 75.28'
- Nail & K.C. remon. tag on NE'y side P. pole N 02° W 42.20'
- Brick cor. at SE cor. garage to hse. #7193 N 49° W 99.32'
- Brick cor. at SW cor. garage to hse. #7193 N 60° W 120.33'
- C/L manhole S 80° W 62.18'
- K.C. Mon., G-1, T8N, R10W, East 112.09'



Signed by *Randy J. Kolehose* Date 9/23/97

Surveyor's Michigan License No. 25854