

MAY 22 2000

1/2

SECTION

LAND CORNER RECORDATION CERTIFICATE
Filing Requirement of Act 74, Mich. P.A. 1970
KENT COUNTY REMONUMENTATION

For corners in

Table with columns: Kent (County), Located in: Courtland Township, Corner Code #. Rows include Public Land Survey, Property Controlling in Section, and Miscellaneous Property in Sec.

REG. OF DEEDS

Handwritten signature

STATE OF MICHIGAN
COUNTY OF KENT
RECEIVED FOR RECORD
1999 OCT 15 AM 8:05

11334

Register of Deeds Stamp & File Number

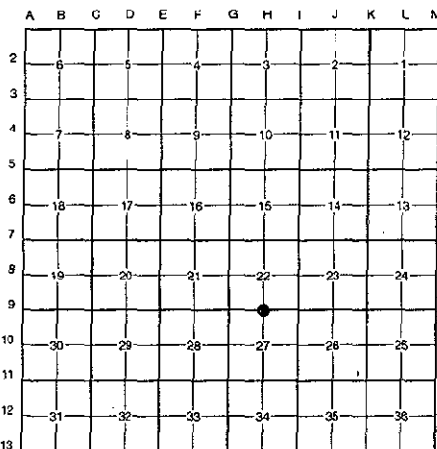
- 4. Lot No. , Recorded Plat
5. Private Claims

I, Randy Kolehouse, in a field survey on January 11 19 99, do hereby certify that under requirements of P.A. 74 Michigan P.A. of 1970, the corner points mentioned in lines 1 and 2 above were in conformance with regulations and rules therefore as required in the current manual of survey instructions of the United States Department of the Interior, Bureau of Land Management or by a decree of a Court of Law and/or that the corner points mentioned in lines 3, 4 and 5 above were in conformance with the rules of the Michigan Board of Land Surveyors or by a Decree of a Court of Law; established, re-established, monumented, re-monumented, recovered, found as expressed below.

NOTE: Not more than 4 corners, all in the same town and range, may be recorded on this certificate.

A. Description of original monument and accessories and/or subsequent restoration:

Table with columns: H-9, 1837, 1988, 1994, G.L.O. Notes, L.C.R.C. #4546, L.C.R.C. #6959A, Cathcart, B. Wickham, Jr., William Byl, Set Post, Set Capped Rod, Fnd. Capped Rod / Set K.C. Monument



This corner was originally approved by the Kent County Remonumentation Peer Group and monumented by William Byl on 2/8/94 and was recorded per L.C.R.C. #6959A.

B. Description of corner evidence found and/or method applied in restoring or reestablishing corner:

H-9 Found a Standard Kent County Monument on line of a fence line running East and West and a tree row running South per L.C.R.C. #6959A as set by William Byl in place of a capped rod he found on the South side of an old concrete base for a fence post which checked L.C.R.C. #4546.

L.C.R.C. #6959A

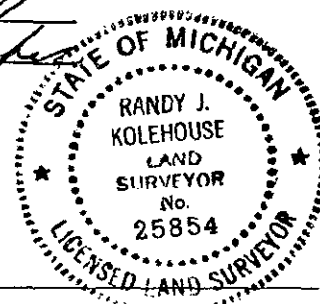
- Nail & KC Remon. tag E. side 8" Apple S15°W 12.83' (m. 12.82')
Nail & KC Remon. tag SE side 60" Trip. Oak S50°W 9.65' (m. 9.67')
Nail & KC Remon. tag N. side 18" Hickory S90°E 31.58' (m. 31.60')

The selected location is accepted by me and is generally accepted by professional surveyors as the best available evidence of the position of the original corner.

C. Description of monument for corner and accessories established to perpetuate locating the position of the corner:

- H-9 Standard Kent County Monument
Nail & K.C. remon. tag on E side 8" Apple S 15° W 12.82'
Nail & K.C. remon. tag on SE side 60" triple Oak S 50° W 9.67'
Nail & K.C. remon. tag on N side 18" Hickory S 90° E 31.60'
Nail & K.C. remon. tag on N side 60" triple Oak S 85° W 11.26'
On fence line running E-W
On tree row running S

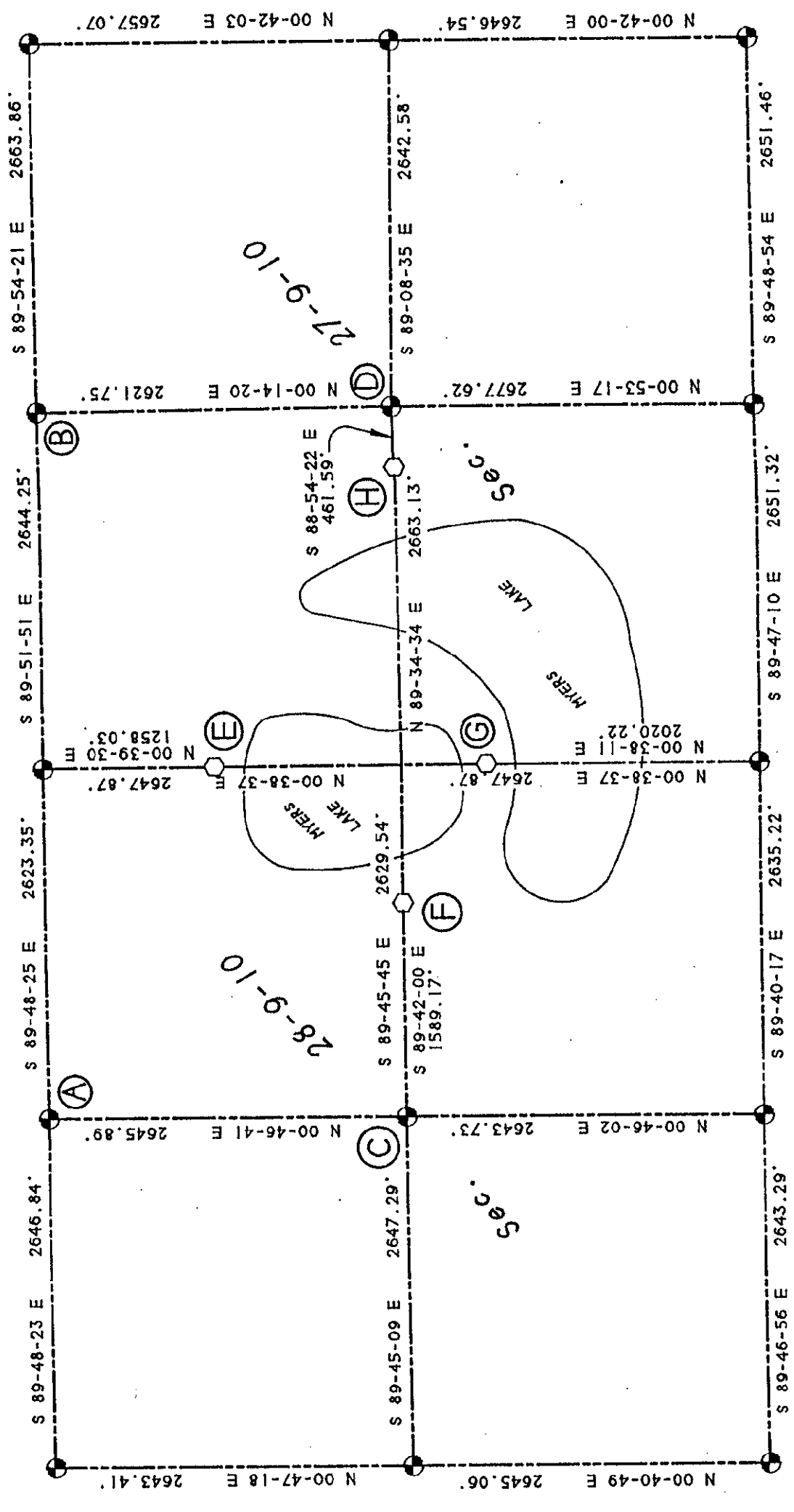
P.A. 345 1990 KENT COUNTY
PEER APPROVED 2/25/99
CHAIRMAN



Signed by Randy J. Kolehouse
EARTH TECH

Date 3/30/99

Surveyor's Michigan License No. 25854



SECTION 27 & 28, TOWN 9 NORTH, RANGE 10 WEST
 COURTLAND TWP., KENT COUNTY, MICHIGAN.

SCALE: 1" = 1000'

- - KENT COUNTY MONUMENT
 - - KENT COUNTY REFERENCE MONUMENT
- BEARING DATUM PER SOLAR OBSERVATION

PREPARED BY:

WILLIAM R. BYL, INC.
 REGISTERED LAND SURVEYORS
 1549 KALAMAZOO SE
 GRAND RAPIDS, MI. 49507