

MAY 22 2000

SECTION

LAND CORNER RECORDATION CERTIFICATE
Filing Requirement of Act 74, Mich. P.A. 1970
KENT COUNTY REMONUMENTATION

For corners in

Table with columns: Kent (County), Located in: Courtland Township, Corner Code #. Rows include Public Land Survey, Property Controlling in Section, Miscellaneous Property in Sec.

REG. OF DEEDS

Handwritten signature/initials

STATE OF MICHIGAN
COUNTY OF KENT
RECEIVED FOR RECORD
1999 OCT 15 AM 8:06

11341

Register of Deeds Stamp & File Number

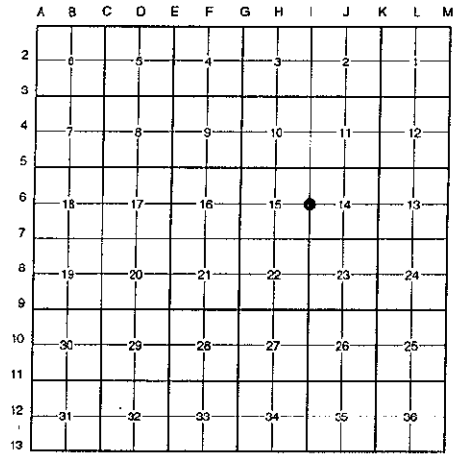
- 4. Lot No.
5. Private Claims

I, Randy Kolehouse, in a field survey on February 11, 1999, do hereby certify that under requirements of P.A. 74 Michigan P.A. of 1970, the corner points mentioned in lines 1 and 2 above were in conformance with regulations and rules therefore as required in the current manual of survey instructions of the United States Department of the interior, Bureau of Land Management or by a decree of a Court of Law and/or that the corner points mentioned in lines 3, 4 and 5 above were in conformance with the rules of the Michigan Board of Land Surveyors or by a Decree of a Court of Law; established, re-established, monumented, re-monumented, recovered, found as expressed below:

NOTE: Not more than 4 corners, all in the same town and range, may be recorded on this certificate.

A. Description of original monument and accessories and/or subsequent restoration:

Table with 4 columns: Corner ID, Description, Monument, Restoration. Includes entries for 1837, 1902, 1994, and 1995 surveys.



This corner was originally approved by the Kent County Remonumentation Peer Group and monumented by Kirk Breitels on 9/17/95 and was recorded per L.C.R.C. #8725.

B. Description of corner evidence found and/or method applied in restoring or reestablishing corner:

I-6 Found a Standard Kent County Monument on line of fence lines running East, West and South per L.C.R.C. #8725 as set by Kirk Breitels in place of a capped rered he found which checked the 1994 survey by G. Hackbardt and the 1902 survey by Williams & Works.

L.C.R.C. #8725

- Nail & KC Remon. tag N. side 12" Maple N80°E 30.67' (m. 30.70')
Nail & KC Remon. tag N. side 12" Oak N50°E 25.48' (m. 25.45')
Nail & KC Remon. tag W. side 18" Oak S30°W 32.85' (m. 32.81')
Nail & KC Remon. tag NE side 22" Maple N60°W 41.00' (m. 40.98')
1/2" rered and cap (All Points) West 35.96' (m: 35.94')

P.A. 345 1990 KENT COUNTY

PEER APPROVED

CHAIRMAN

Handwritten signature of Randy Kolehouse

The selected location is accepted by me and is generally accepted by professional surveyors as the best available evidence of the position of the original corner.

C. Description of monument for corner and accessories established to perpetuate locating the position of the corner:

I-6 Standard Kent County Monument

- Nail & K.C. remon. tag on N side 12" Maple N 80° E 30.70'
Nail & K.C. remon. tag on N side 12" Oak N 50° E 25.45'
Nail & K.C. remon. tag on W side 18" Oak S 30° W 32.81'
Nail & K.C. remon. tag on NE side 22" Maple N 60° W 40.98'
1/2" rebar and cap (all points) West 35.94'
On fence lines running E-W-S

Signed by Randy Kolehouse

EARTH TECH

Date

3/30/99

Surveyor's Michigan License No. 25854

