

MAY 22 2000

SECTION

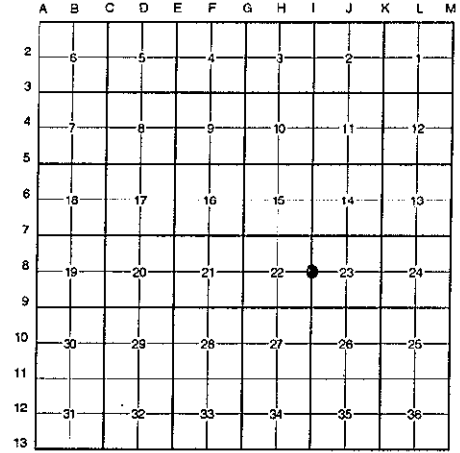
LAND CORNER RECORDATION CERTIFICATE
Filing Requirement of Act 74, Mich. P.A. 1970
KENT COUNTY REMONUMENTATION

For corners in

Table with columns: Kent (County), Located in: Courtland Township, Corner Code #. Rows include Public Land Survey, Property Controlling in Section, Miscellaneous Property in Sec., Lot No., and Private Claims.

REG. OF DEEDS stamp with date 1999 OCT 15 AM 8:06, file number 11343, and text 'Register of Deeds Stamp & File Number'.

I, Randy Kolehouse, in a field survey on January 15 19 99, do hereby certify that under requirements of P.A. 74 Michigan P.A. of 1970, the corner points mentioned in lines 1 and 2 above were in conformance with regulations and rules therefore as required in the current manual of survey instructions of the United States Department of the Interior, Bureau of Land Management or by a decree of a Court of Law and/or that the corner points mentioned in lines 3, 4 and 5 above were in conformance with the rules of the Michigan Board of Land Surveyors or by a Decree of a Court of Law; established, re-established, monumented, re-monumented, recovered, found as expressed below:



NOTE: Not more than 4 corners, all in the same town and range, may be recorded on this certificate.

A. Description of original monument and accessories and/or subsequent restoration:

Table with columns: Date (1837-1991), Description (G.L.O. Notes, Witness Map, L.C.R.C. #292, #3051, #6249), Name (Cathcart, K.C. Surveyor, Medema, Van Kooten & Assoc., Jonker Land Survey, C. Marschall), and Monument Type (Set Post, 1/2" Iron, 12" Solid Iron in Mon. Box, Fnd. 1/2" Rerod in Mon. Box / Set K.C. Monument in Mon. Box, K.C. Monument in Mon. Box).

This corner was originally approved by the Kent County Remonumentation Peer Group and monumented by Rob Jonker on 7/28/82 and was recorded per L.C.R.C. #3051.

B. Description of corner evidence found and/or method applied in restoring or reestablishing corner:

I-8 Found a Standard Kent County Monument at the C/L intersection of Peterson Street (bit.) running East and West and Young Avenue (bit.) running South and (gravel) running North per L.C.R.C.'s #3051 and #6249 as set by Rob Jonker in place of a 1/2" rerod he found in a monument box which checked L.C.R.C. #292 and the K.C. Surveyor's records.

L.C.R.C. #3051

L.C.R.C. #6249

Table comparing monument details for L.C.R.C. #3051 and #6249, including measurements and monument types like Hickory, P.P., and Guy pole.

The selected location is accepted by me and is generally accepted by professional surveyors as the best available evidence of the position of the original corner.

C. Description of monument for corner and accessories established to perpetuate locating the position of the corner:

- I-8 Standard Kent County Monument
Nail & K.C. remon. tag on S side 32" Hickory N 80° W 153.73'
Nail & K.C. remon. tag on NW side P. pole S 55° W 176.98'
Nail & K.C. remon. tag on N side P. pole S 55° E 59.28'
Nail & K.C. remon. tag on S side Guy pole N 46° E 47.32'
On C/L of bit. road running E-W
On C/L of bit. road running S
On C/L of gravel road running N

P.A. 345 1990 KENT COUNTY
PEER APPROVED 2/25/99
CHAIRMAN [Signature]

Signed by [Signature] EARTH TECH
Date 3/30/99

Surveyor's Michigan License No. 25854

