

MAY 22 2000

1/2

SECTION

LAND CORNER RECORDATION CERTIFICATE
Filing Requirement of Act 74, Mich. P.A. 1970
KENT COUNTY REMONUMENTATION

For corners in

Table with columns: Kent (County), Located in: Courtland Township, Corner Code #. Rows include Public Land Survey, Property Controlling in Section, and Miscellaneous Property in Sec.

REG. OF DEEDS

Handwritten signature/initials

STATE OF MICHIGAN
COUNTY OF KENT
RECEIVED FOR RECORD
1999 OCT 15 AM 8:06

11349

Register of Deeds Stamp & File Number

- 4. Lot No. _____, Recorded Plat _____
5. Private Claims _____

I, Randy Kolehouse, in a field survey on February 19 19 99, do hereby certify that under requirements of P.A. 74 Michigan P.A. of 1970, the corner points mentioned in lines 1 and 2 above were in conformance with regulations and rules therefore as required in the current manual of survey instructions of the United States Department of the interior, Bureau of Land Management or by a decree of a Court of Law and/or that the corner points mentioned in lines 3, 4 and 5 above were in conformance with the rules of the Michigan Board of Land Surveyors or by a Decree of a Court of Law; established, re-established, monumented, re-monumented, recovered, found as expressed below:

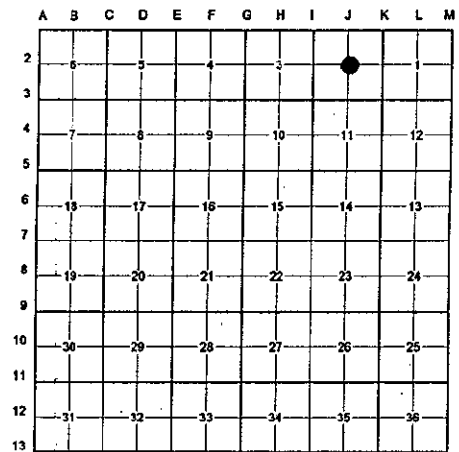
NOTE: Not more than 4 corners, all in the same town and range, may be recorded on this certificate.

A. Description of original monument and accessories and/or subsequent restoration:

J-2 This corner was not originally set by the G.L.O.

Table with columns: Year, L.C.R.C. #, Name, Monument Type. Rows: 1972 L.C.R.C. #127 Maurice Chambers PK and Iron; 1972 L.C.R.C. #187 F.E. Spicer PK Nail over Iron; 1979 L.C.R.C. #1280 Glen Hacklardt 1" Rod

P.A. 345 1990 KENT COUNTY
PEER APPROVED 2/29/99
CHAIRMAN [Signature]



B. Description of corner evidence found and/or method applied in restoring or reestablishing corner:

J-2 Found a 1" iron rod on the C/L of Benham road (bit.) running East and West, on line of a fence line and tree row running North, per L.C.R.C.'s #127, #187 and #1280. Found 1" iron is 0.1' North and 4.9' East of the intersection of 1/4 lines. Due to continued usage, accepted the 1" iron as the Center of Section.

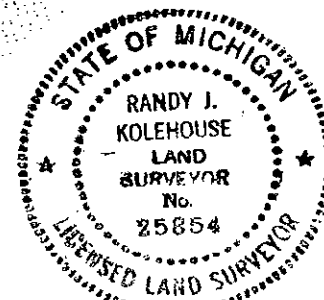
Table with columns: L.C.R.C. #, Description. Rows: L.C.R.C. #127: 34" Maple S75°E 58.04', 30" Maple N 55.98', 30" Maple S40°W 28.1'; L.C.R.C. #1280: 30" Oak N 5° E 57.18' (m. 57.10'), 30" Map. S 30° W 28.10' (m. 28.00')

The selected location is accepted by me and is generally accepted by professional surveyors as the best available evidence of the position of the original corner.

C. Description of monument for corner and accessories established to perpetuate locating the position of the corner:

J-2 Replaced 1" Iron with a Standard Kent County Monument

- Nail & K.C. remon. tag on NW side 40" Maple S 40° W 29.57'
Nail & K.C. remon. tag on SW'y side 40" Maple S 59° E 59.47'
Nail & K.C. remon. tag on W side 36" Maple N 09° E 56.75'
Nail & K.C. remon. tag on NW side 24" Maple N 53° W 54.23'
On C/L of bit. road running E-W
On fence line and tree row running N



Signed by [Signature] WILLIAMS & WORKS

Date 9-27-99

Surveyor's Michigan License No. 25854