

MAY 22 2009

\$7.00
\$2.00

LAND CORNER RECORDATION CERTIFICATE
Filing Requirement of Act 74, Mich. P.A. 1970
KENT COUNTY REMONUMENTATION

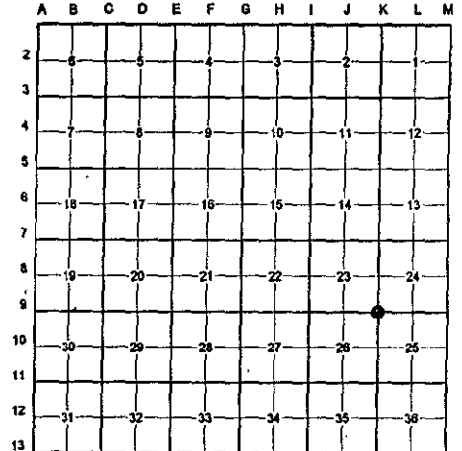
For corners in	SECTION	Located in: Courtland Township	Corner Code #
Kent (County)			
1. Public Land Survey	T 9N R 10W		K-9
	T R		
	T R		
	T R		
2. Property Controlling in Section	S T R		
	S T R		
3. Miscellaneous Property in Sec.	S T R		
	S T R		

STATE OF MICHIGAN
COUNTY OF KENT
RECEIVED FOR RECORD
1999 DEC - 8 AM 10: 01
REG. OF DEEDS

11527

Register of Deeds Stamp & File Number

4. Lot No. _____, Recorded Plat _____
5. Private Claims _____



I, Randy Kolehouse, in a field survey on March 31 19 99, do hereby certify that under requirements of P.A. 74 Michigan P.A. of 1970, the corner points mentioned in lines 1 and 2 above were in conformance with regulations and rules therefore as required in the current manual of survey instructions of the United States Department of the Interior, Bureau of Land Management or by a decree of a Court of Law and/or that the corner points mentioned in lines 3, 4 and 5 above were in conformance with the rules of the Michigan Board of Land Surveyors or by a Decree of a Court of Law; established, re-established, monumented, re-monumented, recovered, found as expressed below:

NOTE: Not more than 4 corners, all in the same town and range, may be recorded on this certificate.

A. Description of original monument and accessories and/or subsequent restoration:

K-9 1837 G.L.O. Notes Cathcart Set Post
No information on record.

P.A. 345 1990 KENT COUNTY
PEER APPROVED 4/21/99
CHAIRMAN Harry Huber

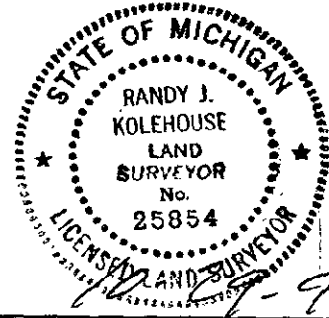
B. Description of corner evidence found and/or method applied in restoring or reestablishing corner:

K-9 Found an unrecorded Standard Kent County Monument in a tilled field. This corner was reestablished by double-proportionate measurement by William Byl P.S. and tentatively approved by the Kent County Remonumentation Peer Group in 1984; however Edward Glaza P.S. requested that the group reconsider his alternate position for this corner (about 16 feet west), based on two irons in Whittall Road (now gone) which were presumed to be eighth corners. At that time the group agreed to table approval of this corner; since then the corner as monumented has been used for several surveys by at least two Kent County survey firms. Old fence and tree lines have been removed because land on all sides of this corner is now in common ownership; fence lines several hundred feet from the corner are not consistently on line, so the peer group agreed to hold the corner as set by Byl using double-proportionate measurement.

The selected location is accepted by me and is generally accepted by professional surveyors as the best available evidence of the position of the original corner.

C. Description of monument for corner and accessories established to perpetuate locating the position of the corner:

K-9 Standard Kent County Monument
Nail & K.C. remon. tag on W side P. pole S 10° W 1035.38'
Nail & K.C. remon. tag on W side W'y P. pole S 12° E 1089.41'
NW cor. W'y alum. bldg. S 42° W 1183.92'
Nail & K.C. remon. tag on E side 24" Hickory N 37° W 829.37'



Signed by Randy J. Kolehouse Date 4-29-99
WILLIAMS & WORKS
Surveyor's Michigan License No. 25854