

1/2

MAY 22 2000

LAND CORNER RECORDATION CERTIFICATE
Filing Requirement of Act 74, Mich. P.A. 1970
KENT COUNTY REMONUMENTATION

For corners in SECTION Kent (County)

Table with columns: Located in: Courtland Township, Corner Code #. Rows include Public Land Survey, Property Controlling in Section, and Miscellaneous Property in Sec.

REG. OF DEEDS

Handwritten signature

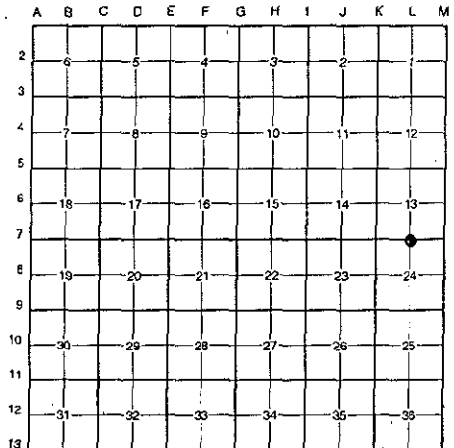
STATE OF MICHIGAN COUNTY OF KENT RECEIVED FOR RECORD 1999 OCT 15 AM 8:07

11375

Register of Deeds Stamp & File Number

4. Lot No. Recorded Plat
5. Private Claims

I, Randy Kolehouse, in a field survey on January 18 19 99, do hereby certify that under requirements of P.A. 74 Michigan P.A. of 1970, the corner points mentioned in lines 1 and 2 above were in conformance with regulations and rules therefore as required in the current manual of survey instructions of the United States Department of the Interior, Bureau of Land Management or by a decree of a Court of Law and/or that the corner points mentioned in lines 3, 4 and 5 above were in conformance with the rules of the Michigan Board of Land Surveyors or by a Decree of a Court of Law; established, re-established, monumented, re-monumented, recovered, found as expressed below:



NOTE: Not more than 4 corners, all in the same town and range, may be recorded on this certificate.

A. Description of original monument and accessories and/or subsequent restoration:

Table with 4 columns: Corner Code, Description, Name, and Monument Type. Rows include G.L.O. Notes, Survey, L.C.R.C. #3598, and L.C.R.C. #6225.

This corner was originally approved by the Kent County Remonumentation Peer Group and monumented by William Byl on 10/24/83 and was recorded per L.C.R.C. #3598.

B. Description of corner evidence found and/or method applied in restoring or reestablishing corner:

L-7 Found a Standard Kent County Monument 1.0' South of the C/L of 13 Mile Road (gravel) running East and West per L.C.R.C.'s #3598 and #6225 as set by William Byl using a 1902 survey by Williams & Works.

L.C.R.C. #3598

L.C.R.C. #6225

Nail & tag, N sd. 36" Oak S 60 W 35.30'
Nail & tag, E sd. 10" Hickory S 00 W 34.10'
Nail & tag, E sd. 8" Hickory S 35 E 19.71'

Nail & Remon tag in N sd. 48" Oak S 53 W 35.22'
Nail & Remon tag in E sd. 16" Hickory S 0 W 34.06' (m. 34.08')
Nail & Remon tag in N sd. 10" Cherry N 61 W 71.23' (m. 71.31')
Nail & Remon tag in NE sd. 10" Hickory S 39 E 19.55' (m. 19.58')

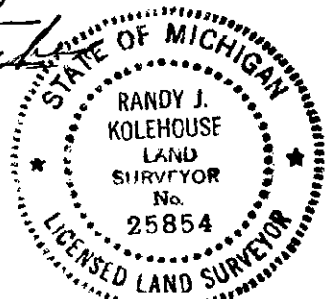
The selected location is accepted by me and is generally accepted by professional surveyors as the best available evidence of the position of the original corner.

C. Description of monument for corner and accessories established to perpetuate locating the position of the corner:

L-7 Standard Kent County Monument

Nail & K.C. remon. tag on N side 48" Oak S 53° W 35.22'
Nail & K.C. remon. tag on E side 16" Hickory South 34.08'
Nail & K.C. remon. tag on N side 10" Cherry N 61° W 71.31'
Nail & K.C. remon. tag on NE side 12" Hickory S 39° E 19.58'
Nail & K.C. remon. tag on SE side triple 10" Hickory N 55° E 72.08'
Iron pipe East 10.8'
C/L of gravel road running E-W, North 1.0'

P.A. 345 1990 KENT COUNTY PEER APPROVED 2/25/99 CHAIRMAN Randy Kolehouse



Signed by Randy J. Kolehouse

Date 3/30/99

Surveyor's Michigan License No. 25854