

REMONUMENTATION
 OCT 28 1994
 COMMISSIONER

KENT COUNTY REMONUMENTATION
 COURTLAND TWP.

STATE OF MICHIGAN
 COUNTY OF KENT
 RECEIVED FOR RECORD

LAND CORNER RECORDATION CERTIFICATE
 Filing Requirement of Act 74, Mich. P.A. 1970

94 JUL -5 PM 3: 12

For corners in
KENT COUNTY
 (County)

Located in:

Corner Code #

- 1. Public Land Survey T ___ R ___
 T ___ R ___
 T ___ R ___
 T ___ R ___
- 2. Property Controlling S 28 T 9N R 10W
 in Section S ___ T ___ R ___
- 3. Miscellaneous S ___ T ___ R ___
 Property in Sec. S ___ T ___ R ___

Other Code
2

Wit. Mon.
on E. line
Sec. 28

W. J. Bond
 REG. OF DEEDS

6962

Register of Deeds Stamp & File Number

- 4. Lot No. _____, Recorded Plat _____
- 5. Private Claims _____

A	B	C	D	E	F	G	H	I	J	K	L	M
2	6	5	4	3	2	1						
3												
4	7	8	9	10	11	12						
5												
6	18	17	16	15	14	13						
7												
8	19	20	21	22	23	24						
9												
10	30	29	28	27	26	25						
11												
12	31	32	33	34	35	36						
13												

I, William R. Byl, in a field survey on Feb. 18, 19 94, do hereby certify that under requirements of P.A. 74, Michigan P.A. of 1970, the corner points mentioned in lines 1 and 2 above were in conformance with regulations and rules therefore as required in the current manual of survey instructions of the United States Department of the Interior, Bureau of Land Management or by a decree of a Court of Law and/or that the corner points mentioned in lines 3, 4 and 5 above were in conformance with the rules of the Michigan Board of Land Surveyors or by a Decree of a Court of Law; established, re-established, monumented, re-monumented, recovered, found as expressed below:

NOTE: Not more than 4 corners, all in the same town and range, may be recorded on this certificate.

A. Description of original monument and accessories and/or subsequent restoration:

Bearing tree per GLO survey North side of Myers Lake
 No other information available from the County Surveyor's Office, other surveying firms or any other sources.

P.A. 345 1990 KENT COUNTY
 PEER APPROVED 3/24/98
 CHAIRMAN *Harry Spuhler*

B. Description of corner evidence found and/or method applied in restoring or reestablishing corner:

Did not find bearing tree per GLO survey

Found concrete monuments at plat corners along the East line of "MYERS LAKEVIEW PLAT" (Liber 65, Page 34). According to plat, these monuments are on the East line of Section 28. Found monuments to be within 0.3' of a straight line between the NE and SE corners of Section 28 with measurements according to the plat. Held the concrete monument at the North line of Hessler Drive and the East line of Section 28 as a reference point on the East line of Section 28.

See sketch reverse side-corner "E"

C. Description of monument for corner and accessories established to perpetuate locating the position of the corner:

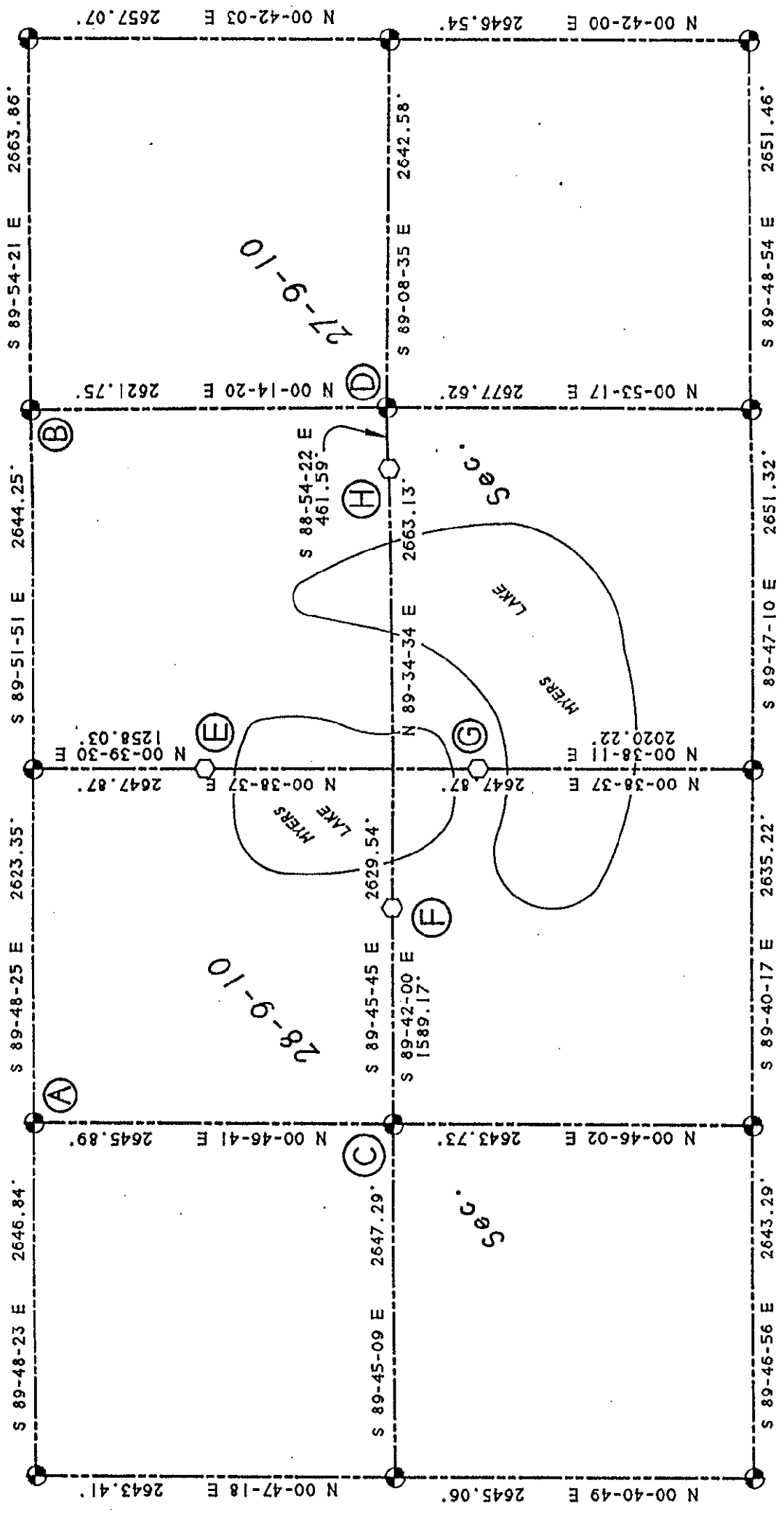
Replaced concrete monument with "Witness Corner" Kent County Monument

SW cor. conc. porch	N55°E	100.08'
Set Nail & KC Remon. tag SE side Tele. Pole	N40°E	40.07'
Set Nail & KC Remon. tag SW side Tele. Pole	N45°W	63.92'
Set Nail & KC Remon. tag E. side Power Pole	S00°E	65.12'
Conc. Monument	North	205.30'
NE corner Section 28 (Kent Co. Mon.)	North	1258.03' (1257.92' Plat)
C/L Hessler Dr. is South 32' m/l		



Signed by *W. R. Byl*
 Surveyor's Michigan License No. 23502

Date 06.17.94



N SECTION 27 & 28, TOWN 9 NORTH, RANGE 10 WEST
 COURTLAND TWP., KENT COUNTY, MICHIGAN.

SCALE: 1" = 1000'

- ⊙ - KENT COUNTY MONUMENT
- - KENT COUNTY REFERENCE MONUMENT
- BEARING DATUM PER SOLAR OBSERVATION

PREPARED BY:

WILLIAM R. BYL, INC.
 REGISTERED LAND SURVEYORS
 1549 KALAHAZOO SE
 GRAND RAPIDS, MI. 49507