

\$7.00
\$2.00

MAR 08 1999

KENT COUNTY REMONUMENTATION

LAND CORNER RECORDATION CERTIFICATE
Filing Requirement of Act 74, Mich. P.A. 1970

SECTION

For corners in
KENT COUNTY
(County)

Located In:	Corner Code #
T 9N R 12W	M-12
T R	Common
T 9N R 11W	A-12
T R	
S T R	
S T R	
S T R	
S T R	

- Public Land Survey
- Property Controlling in Section
- Miscellaneous Property in Sec.

STATE OF MICHIGAN
COUNTY OF KENT
RECEIVED FOR RECORDS
98 MAY 21 AM 8:33
REG. OF DEEDS
Lucy Sand

10636

Register of Deeds Stamp & File Number

- Lot No. _____, Recorded Plat _____
- Private Claims _____

I, Kirk Breitels, in a field survey on April 7, 19 98 do hereby state that under requirements of P.A. 74, Michigan P.A. of 1970, the corner points mentioned in lines 1 and 2 above were in conformance with regulations and rules therefore as required in the current manual of survey instructions of the United States Department of the Interior, Bureau of Land Management or by a decree of a Court of Law and /or that the corner points mentioned in lines 3, 4 and 5 above were in conformance with the rules of the Michigan Board of Land Surveyors or by a Decree of a Court of Law; established, re-established, monumented, recovered, found as expressed below:

NOTE: Not more than 2 corners, all in the same town and range, may be recorded on this certificate.

	A	B	C	D	E	F	G	H	I	J	K	L
1												
2	6			5			4			3		2
3												
4	7						8			9		10
5												
6	18									17		16
7												
8	19									20		21
9												
10	30											29
11												
12	31											32
13												

A. Description of original monument and accessories and/or subsequent restoration:

M-12 1837	GLO	Brookfield	Set Post
1965	Kent Co. Wits		1" Iron next to Stone
1973	LCRC #478	Spicer	1" Iron
1983	LCRC #3384	Stadt	Set Kent County Monument
1995	LCRC #8339	Breitels	Kent County Monument

P.A. 345 1990 KENT COUNTY
PEER APPROVED 4/30/98
CHAIRMAN *Harry Hubert*

The position of this corner was previously approved by the Kent County Remonumentation Peer Group, monumented by Russell E. Stadt on 5-5-83 and was recorded per LCRC #3384.

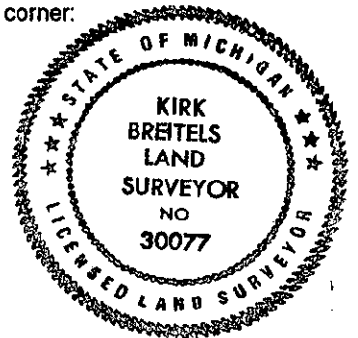
B. Description of corner evidence found and/or method applied in restoring or reestablishing corner:

M-12 Found Kent County Monument (Harrison) per witnesses from above LCRC as set by Russell E. Stadt in place of the 1" Iron he found. Said Iron checks with Kent Co. Wit. and LCRC #478.	
LCRC #3384	LCRC #8339
Nail & Remon. tag 14" Ash N85°W 59.00'	Nail & Remon. tag 20" Ash N85°W 59.08'
Nail & Remon. tag Tri. 28" Oak East 90.45'	Nail & Remon. tag Tri. 32" Oak S90°E 90.48'
NW corner conc. blk. hse. fnd. S65°E 115.15'	Nail & Remon. tag P. Pole S45°W 48.20'
SW corner conc. blk. hse. fnd. S40°E 142.23'	NW corner conc. blk. hse. fnd. S65°E 115.15'
C/L of road N-S is 4' East	SW corner conc. blk. hse. fnd. S40°E 142.23'
On tree row E-W	C/L road N-S is 4' East and on tree row E-W

The selected location is accepted by me and is generally accepted by professional surveyors as the best available evidence of the position of the original corner.

C. Description of monument for corner and accessories established to perpetuate locating the position of the corner:

- M-12 Standard Kent County Monument
- Nail & KC Remon. tag N. side 20" Ash N85°W 59.00'
 - Nail & KC Remon. tag S. side Tri. 32" Oak S90°E 90.48'
 - Nail & KC Remon. tag SE side P. Pole S45°W 48.20'
 - NW corner concrete block house foundation S65°E 115.15'
 - SW corner concrete block house foundation S40°E 142.23'
 - C/L N-S asphalt road is 4' ± East
 - On tree row E-W ±



Signed by *Kirk Breitels*
Surveyor's Michigan License No. 30077

Date 4/30/98