

KENT COUNTY REMONUMENTATION

MAY 21 1998

\$7.00
\$2.00

SECTION

KENT COUNTY REMONUMENTATION LAND CORNER RECORDATION CERTIFICATE

Filing Requirement of Act 74, Mich. P.A. 1970

For corners in

KENT COUNTY (County)	Located In:	Corner Code #
1. Public Land Survey	T9N R11W	B-5
	T R	
	T R	
	T R	
2. Property Controlling in Section	S T R	
	S T R	
3. Miscellaneous Property in Sec.	S T R	
	S T R	

4. Lot No. _____, Recorded Plat _____
5. Private Claims _____

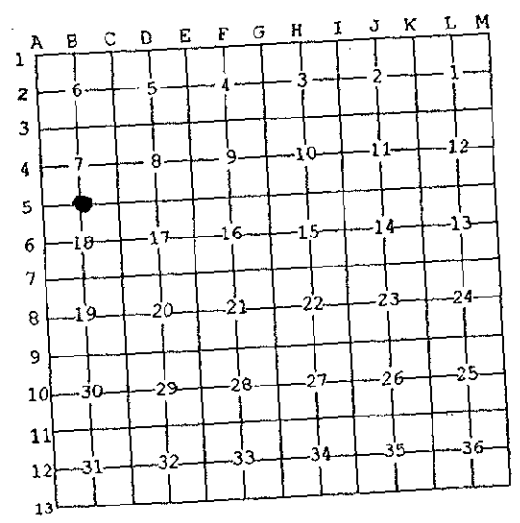
I, Kirk Breitels, in a field survey on April 29, 1998 do hereby state that under requirements of P.A. 74, Michigan P.A. of 1970, the corner points mentioned in lines 1 and 2 above were in conformance with regulations and rules therefore as required in the current manual of survey instructions of the United States Department of the Interior, Bureau of Land Management or by a decree of a Court of Law and/or that the corner points mentioned in lines 3, 4 and 5 above were in conformance with the rules of the Michigan Board of Land Surveyors or by a Decree of a Court of Law; established, re-established, monumented, recovered, found as expressed below:

NOTE: Not more than 2 corners, all in the same town and range, may be recorded on this certificate.

STATE OF MICHIGAN
COUNTY OF KENT
RECEIVED FOR RECORD
98 MAY 21 AM 9:30
REG. OF DEEDS
[Signature]

10598

Register of Deeds Stamp & File Number



A. Description of original monument and accessories and/or subsequent restoration:

B-5	1837	GLO	Whitcomb	Set Post
				Iron
	1980	LCRC #1379	Hackbardt	3/4" Iron
	1981	LCRC #2454	Jonker	Set Kent County Monument
	1990	LCRC #5634	Marschall	Kent County Monument

P.A. 345 1990 KENT COUNTY
PEER APPROVED 4/30/98
CHAIRMAN *[Signature]*

The position of this corner was previously approved by the Kent County Remonumentation Peer Group, monumented by Robert J. Jonker on 11-25-81 and was recorded per LCRC #2454.

B. Description of corner evidence found and/or method applied in restoring or reestablishing corner:

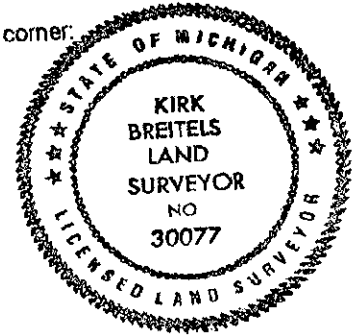
B-5 Found Nothing at corner. Set Kent County Monument (Harrison) at same location per wits. from above LCRC as set in 1981 by Robert J. Jonker in place of the 3/4" Iron he found. Said Iron checks with Kent Co. Wits. & LCRC #1379.
LCRC #2454

Nail & Remon. tag 18" Ash	S80°W 18.67'	Nail & Remon. tag 16" Beech	S20°W 72.42'
Nail & Remon. tag 18" Ash	S68°E 21.83'	Nail & Remon. tag 8" Ash	S40°E 24.15'
Nail & Remon. tag 8" Maple	N75°E 11.95'	Nail & Remon. tag 22" Maple	S55°W 48.82'
SE corner fnd. of outhouse	N55°W 11.54'	Nail & Remon. tag 22" Ash	S65°E 21.83'
SW corner fnd. of outhouse	N05°W 6.95'	SE corner conc. hse. fnd.	N60°W 9.15'

The selected location is accepted by me and is generally accepted by professional surveyors as the best available evidence of the position of the original corner.

C. Description of monument for corner and accessories established to perpetuate locating the position of the corner:

B-5 Standard Kent County Monument	
Nail & KC Remon. tag NE side 10" Ash stump	S40°E 24.15'
SE corner concrete house foundation	N60°W 9.15'
Nail & KC Remon. tag S. side 18" Maple	N75°E 11.95'
NE corner concrete house foundation	N00°E 37.01'
SE corner of East deck post	N90°W 23.13'



Signed by *[Signature]*
Surveyor's Michigan License No. 30077

Date 4/30/98