

**SURVEY & REMONUMENTATION**

\$7.00  
\$2.00

MAR 08 1999

**KENT COUNTY REMONUMENTATION**

**SECTION**

**LAND CORNER RECORDATION CERTIFICATE**  
Filing Requirement of Act 74, Mich. P.A. 1970

For corners in

KENT COUNTY

(County)

Located In:

Corner Code #

1. Public Land Survey	T <u>9</u> N	R <u>11</u> W	B-12
	T	R	
	T	R	
	T	R	
2. Property Controlling in Section	S	T	R
	S	T	R
3. Miscellaneous Property in Sec.	S	T	R
	S	T	R

STATE OF MICHIGAN  
 COUNTY OF KENT  
 RECEIVED FOR RECORD  
 98 NOV 16 AM 8:06  
 REG. OF DEEDS  
 10909  
*Luis Standa*

Register of Deeds Stamp & File Number

4. Lot No. \_\_\_\_\_, Recorded Plat \_\_\_\_\_  
 5. Private Claims \_\_\_\_\_

I, Kirk Breitels, in a field survey on Aug. 3, 1998 do hereby state that under requirements of P.A. 74, Michigan P.A. of 1970, the corner points mentioned in lines 1 and 2 above were in conformance with regulations and rules therefore as required in the current manual of survey instructions of the United States Department of the Interior, Bureau of Land Management or by a decree of a Court of Law and /or that the corner points mentioned in lines 3, 4 and 5 above were in conformance with the rules of the Michigan Board of Land Surveyors or by a Decree of a Court of Law; established, re-established, monumented, recovered, found as expressed below:

NOTE: Not more than 2 corners, all in the same town and range, may be recorded on this certificate.

1	A	B	C	D	E	F	G	H	I	J	K	L	M
2		6		5		4		3		2		1	
3													
4		7		8		9		10		11		12	
5													
6		18		17		16		15		14		13	
7													
8		19		20		21		22		23		24	
9													
10		30		29		28		27		26		25	
11													
12		31		32		33		34		35		36	
13													

A. Description of original monument and accessories and/or subsequent restoration:

B-12 1837 GLO	Not Set
1959 Williams & Works	Held point at E-W fence line and true N-S 1/4 line - no monumentation
Kent Co. Wits	No Information
1978 LCRC #1208 Nederveld	Set Capped Rerod at Intersection of 1/4 lines
14" Hickory ENE 16.52'	36" Oak ESE 13.33' "L" Iron WNW 81.08'

P.A. 345 1990 KENT COUNTY  
 PEER APPROVED 10/22/98  
 CHAIRMAN [Signature]

B. Description of corner evidence found and/or method applied in restoring or reestablishing corner:

B-12 Found Capped Rerod (Nederveld) per LCRC #1208 witnesses. However, this Capped Rerod is 3.5' E. and 6.3' N. of the Intersection of 1/4 lines and measurements to it do not agree with a Nederveld survey dated 12-18-79.

Also found a Capped Rerod (Fauser - CP Co) that is 0.1' N. and less than 0.1' E. of the Intersection of 1/4 lines.

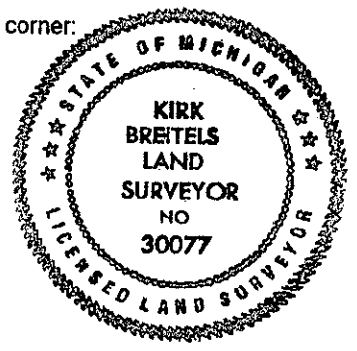
Given the fact that Nederveld intended to set at Intersection of 1/4 lines and measurements don't fit, I recommend using the Capped Rerod by Fauser - CP Co.

The Capped Rerod (Fauser - CP Co.) is accepted by me and is generally accepted by professional surveyors as the best available evidence of the position of the corner.

C. Description of monument for corner and accessories established to perpetuate locating the position of the corner:

B-12 Set Standard Kent County Monument in place of the Capped Rerod (Fauser - CP Co.)

Nail & KC Remon. tag W. side 6" Oak	N00°E	30.77'
Nail & KC Remon. tag NW side 18" Hickory	N55°E	22.82'
Nail & KC Remon. tag S. side 18" Beech	N80°E	3.52'
Nail & KC Remon. tag SE side 20" Pine	S50°W	32.92'
C/L cable route sign post	N85°W	45.8'
Capped Rerod (Nederveld)	N30°E	7.11'
Remains of fence E-W is North 1'		
Remains of fence to N is East 4'		



Signed by [Signature]  
 Surveyor's Michigan License No. 30077

Date 11/12/98