

SURVEY & REMONUMENTATION

KENT COUNTY REMONUMENTATION

\$7.00
\$2.00
MAR 08 1999

LAND CORNER RECORDATION CERTIFICATE
Filing Requirement of Act 74, Mich. P.A. 1970

For corners in

KENT COUNTY
(County)

Located in:

Corner Code #

1. Public Land Survey

T 9N R 11W C-6

T R

T R

T R

2. Property Controlling in Section

S T R

S T R

3. Miscellaneous Property in Sec.

S T R

S T R

4. Lot No. _____, Recorded Plat _____

5. Private Claims _____

I, Kirk Breitels, in a field survey on Jan. 2, 1998 do hereby state that under requirements of P.A. 74, Michigan P.A. of 1970, the corner points mentioned in lines 1 and 2 above were in conformance with regulations and rules therefore as required in the current manual of survey instructions of the United States Department of the Interior, Bureau of Land Management or by a decree of a Court of Law and/or that the corner points mentioned in lines 3, 4 and 5 above were in conformance with the rules of the Michigan Board of Land Surveyors or by a Decree of a Court of Law; established, re-established, monumented, recovered, found as expressed below:

NOTE: Not more than 2 corners, all in the same town and range, may be recorded on this certificate.

STATE OF MICHIGAN
COUNTY OF KENT
RECEIVED FOR RECORD

98 MAR -5 AM 8:32

REG. OF DEEDS

10514
Register of Deeds Stamp & File Number

	A	B	C	D	E	F	G	H	I	J	K	L	M
1													
2	6		5		4		3		2		1		
3													
4	7		8		9		10		11		12		
5													
6	18		17		16		15		14		13		
7													
8	19		20		21		22		23		24		
9													
10	30		29		28		27		26		25		
11													
12	31		32		33		34		35		36		
13													

A. Description of original monument and accessories and/or subsequent restoration:

- C-6 1837 GLO Whitcomb Set Post
- 1930 Kent Co. Wits Stone
- 1980 LCRC #1379 Hackbardt "X" on Stone
- 1981 LCRC#2455 Jonker Set Kent County Monument
- 1990 LCRC #5644 Marschall Kent County Monument

P.A. 345 1990 KENT COUNTY
PEER APPROVED 2/19/98
CHAIRMAN [Signature]

The position of this corner was previously approved by the Kent County Remonumentation Peer Group, monumented by Robert J. Jonker on 11-25-81 and was recorded per LCRC #2455.

B. Description of corner evidence found and/or method applied in restoring or reestablishing corner:

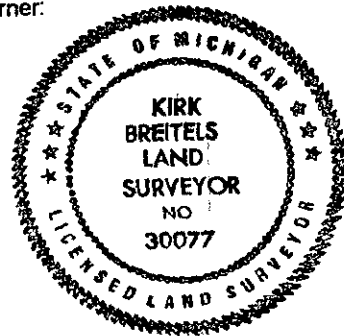
C-6 Found Kent County Monument (Harrison) per witnesses from above LCRC as set by Robert J. Jonker in place of the Stone with "X" on top that he found. Said Stone checks with Kent Co. Wits. and LCRC #1379.

- LCRC #2455
- Nail & Remon. tag 30" Beech N78°E 89.96'
- Nail & Remon. tag 30" Maple S48°E 110.66'
- Nail & Remon. tag 15" Walnut N62°E 17.70'
- Nail & Remon. tag Fence Post S04°W 23.00'
- C/L Pavement - NW 32 1/2 feet
- In line w/pavement N-W & on line w/fence to S-E
- LCRC #5644
- Nail & Remon. tag 20" Walnut N62°E 17.68'
- Nail & Remon. tag 10" dia. Fc. Post S25°E 10.20'
- Nail & Remon. tag 36" Maple S52°E 110.63'
- Nail & Remon. tag 32" Beech N79°E 89.65'
- C/L pavement N45°W 32.5±
- On C/L roads to West & North

The selected location is accepted by me and is generally accepted by professional surveyors as the best available evidence of the position of the original corner.

C. Description of monument for corner and accessories established to perpetuate locating the position of the corner:

- C-6 Standard Kent County Monument
- Nail & KC Remon. tag SE side 24" Walnut N62°E 17.70'
- Nail & KC Remon. tag W. side 10" dia. Fence Post S25°E 10.35'
- Nail & KC Remon. tag NE side 38" Maple S52°E 110.53'
- Nail & KC Remon. tag S. side 36" Beech N79°E 89.73'
- C/L pavement N45°W 32.5±
- On C/L of roads N& W and on fence line E ±



Signed by [Signature]
Surveyor's Michigan License No. 30077

Date 2/19/98