

\$7.00
\$2.00
MAR 08 1999

KENT COUNTY REMONUMENTATION

LAND CORNER RECORDATION CERTIFICATE
Filing Requirement of Act 74, Mich. P.A. 1970

For corners in SECTION

<u>KENT COUNTY</u> (County)	Located In:	Corner Code #
1. Public Land Survey	T <u>9N</u> R <u>11W</u>	<u>C-8</u>
	T ___ R ___	_____
	T ___ R ___	_____
	T ___ R ___	_____
2. Property Controlling in Section	S ___ T ___ R ___	_____
	S ___ T ___ R ___	_____
3. Miscellaneous Property in Sec.	S ___ T ___ R ___	_____
	S ___ T ___ R ___	_____

STATE OF MICHIGAN
COUNTY OF KENT
RECEIVED FOR RECORD

98 MAY 21 AM 8:30

REG. OF DEEDS

Lucy Stand

10599

Register of Deeds Stamp & File Number

4. Lot No. _____, Recorded Plat _____
5. Private Claims _____

I, Kirk Breitels, in a field survey on Feb. 25, 19 98 do hereby state that under requirements of P.A. 74, Michigan P.A. of 1970, the corner points mentioned in lines 1 and 2 above were in conformance with regulations and rules therefore as required in the current manual of survey instructions of the United States Department of the Interior, Bureau of Land Management or by a decree of a Court of Law and for that the corner points mentioned in lines 3, 4 and 5 above were in conformance with the rules of the Michigan Board of Land Surveyors or by a Decree of a Court of Law; established, re-established, monumented, recovered, found as expressed below:

A	B	C	D	E	F	G	H	I	J	K	L	M
1												
2	6	5	4	3	2	1						
3												
4	7	8	9	10	11	12						
5												
6	18	17	16	15	14	13						
7												
8	19	20	21	22	23	24						
9												
10	30	29	28	27	26	25						
11												
12	31	32	33	34	35	36						
13												

NOTE: Not more than 2 corners, all in the same town and range, may be recorded on this certificate.

A. Description of original monument and accessories and/or subsequent restoration:

C-8	1837	GLO	Whitcomb	Set Post
		1879-1907 Williams & Works		Leaded Stone
		1940 Kent Co. Wits.		Leaded Stone
		1983 LCRC #3651	Bueche	Set Kent County Monument
		1990 LCRC #5646	Marschall	Kent County Monument

P.A. 345 1990 KENT COUNTY
PEER APPROVED 4/30/98
CHAIRMAN *Henry Huber*

The position of this corner was previously approved by the Kent County Remonumentation Peer Group, monumented by John C. Bueche on 11-21-83 and was recorded per LCRC #3651.

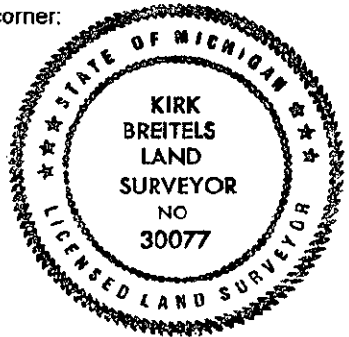
B. Description of corner evidence found and/or method applied in restoring or reestablishing corner:

C-8	Found Kent County Monument (Harrison) per witnesses from above LCRC as set by John C. Bueche in place of the Stone he found. Said Stone checks with Kent Co. Wits and Williams & Works information.		
LCRC #3651	LCRC #5646		
Nail & Remon. tag 10" Pine	N20°W 48.82'	Nail & Remon. tag 14" Pine	N20°W 48.85'
Nail & Remon. tag 6" Poplar	N30°E 4.67'	Nail & Remon. tag 16" Poplar	N30°E 4.91'
Nail & Remon. tag 6" Elm	N90°E 24.74'	Nail & Remon. tag 6" Oak	N85°W 13.95'
Nail & Remon. tag 4" Oak	N85°W 13.96'	Nail & Remon. tag 12" Elm	N90°E 24.70'

The selected location is accepted by me and is generally accepted by professional surveyors as the best available evidence of the position of the original corner.

C. Description of monument for corner and accessories established to perpetuate locating the position of the corner:

C-8	Standard Kent County Monument
Nail & KC Remon. tag E. side 16" Pine	N20°W 48.83'
Nail & KC Remon. tag W. side 6" stump	N30°E 4.91'
Nail & KC Remon. tag N. side 8" Oak	N85°W 13.95'
Nail & KC Remon. tag S. side 16" stump	N90°E 24.93'
Nail & KC Remon. tag E. side P. Pole	N05°W 4.80'
Nail & KC Remon. tag E. side Lt. Pole	S05°W 34.05'



Signed by *Kirk Breitels*
Surveyor's Michigan License No. 30077

Date 4/30/98