

\$7.00
\$2.00

MAR 08 1999

KENT COUNTY REMONUMENTATION

SECTION

LAND CORNER RECORDATION CERTIFICATE
Filing Requirement of Act 74, Mich. P.A. 1970

For corners in

KENT COUNTY
(County)

Located In:

Corner Code #

- 1. Public Land Survey T 9N R 11W C-9
- T R _____
- T R _____
- T R _____
- 2. Property Controlling S T R _____
- in Section S T R _____
- 3. Miscellaneous S T R _____
- Property in Sec. S T R _____

STATE OF MICHIGAN
COUNTY OF KENT
RECEIVED FOR RECORD

98 MAY 21 AM 8:31

REG. OF DEEDS

W. J. ...

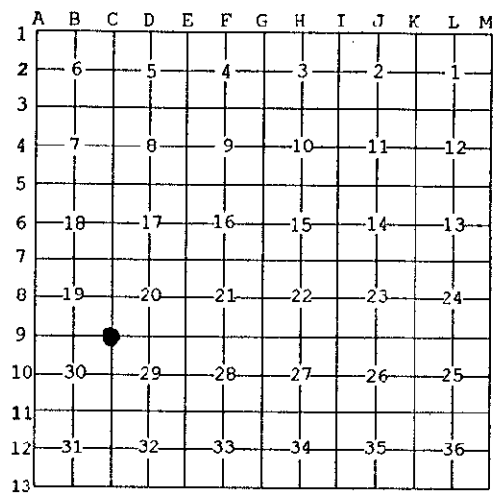
10600

Register of Deeds Stamp & File Number

- 4. Lot No. _____, Recorded Plat _____
- 5. Private Claims _____

I, Kirk Breitels, in a field survey on Feb. 25, 1998 do hereby state that under requirements of P.A. 74, Michigan P.A. of 1970, the corner points mentioned in lines 1 and 2 above were in conformance with regulations and rules therefore as required in the current manual of survey instructions of the United States Department of the Interior, Bureau of Land Management or by a decree of a Court of Law and /or that the corner points mentioned in lines 3, 4 and 5 above were in conformance with the rules of the Michigan Board of Land Surveyors or by a Decree of a Court of Law; established, re-established, monumented, recovered, found as expressed below:

NOTE: Not more than 2 corners, all in the same town and range, may be recorded on this certificate.



A. Description of original monument and accessories and/or subsequent restoration:

C-9	1837 GLO	Whitcomb	Set Post
	1902-07 Williams & Works		Leaded Stone
	Kent Co. Wits		Leaded Stone
	1984 LCRC #3801	Bueche	Grouted Kent County Monument cap on top of Stone
	1990 LCRC #5647	Marschall	Kent County Monument

P.A. 345 1990 KENT COUNTY
PEER APPROVED 4/30/98
CHAIRMAN [Signature]

The position of this corner was previously approved by the Kent County Remonumentation Peer Group, monumented by John C. Bueche on 4-21-84 and was recorded per LCRC #3801.

B. Description of corner evidence found and/or method applied in restoring or reestablishing corner:

C-9	Found Kent County Monument cap grouted on top of a Stone per witnesses from above LCRC as set by John C. Bueche. Said Stone checks with Williams & Works information and Kent Co. Wits.		
LCRC #3801	LCRC #5647		
Nail & Remon. tag 6" El m	N80°W 4.25'	Nail & Remon. tag 6" Oak	N40°W 29.22'
Nail & Remon. tag 3-8" Hickory	N25°W 16.12'	Nail & Remon. tag 8" Oak	N65°W 48.21'
Nail & Remon. tag 8" Oak	N50°W 30.79'	Nail & Remon. tag Tri. 10" Hickory	N05°W 16.15'
Nail & Remon. tag 10" Oak	N90°E 36.45'	Nail & Remon. tag 12" Oak	N90°E 36.42'
On fences & tree rows N-S & E-W		Nail & Remon. tag 6" Elm	N85°W 4.26'

The selected location is accepted by me and is generally accepted by professional surveyors as the best available evidence of the position of the original corner.

C. Description of monument for corner and accessories established to perpetuate locating the position of the corner:

C-9	Kent County Monument cap grouted on top of a Stone
Nail & KC Remon. tag SW side 9" Oak	N40°W 29.22'
Nail & KC Remon. tag S. side 14" Oak	N65°W 48.21'
Nail & KC Remon. tag W. side Tri. 10" Hickory	N05°W 16.18'
Nail & KC Remon. tag N. side 15" Oak	N90°E 36.40'
Nail & KC Remon. tag W. side 6" Elm	S05°W 27.72'



Signed by [Signature]
Surveyor's Michigan License No. 30077

Date 4/30/98