

MAR 08 1999

\$7.00 SECTION
\$2.00

KENT COUNTY REMONUMENTATION

LAND CORNER RECORDATION CERTIFICATE
Filing Requirement of Act 74, Mich. P.A. 1970

For corners in

KENT COUNTY
(County)

Located in:

Corner Code #

1. Public Land Survey	T 9N	R 11W	C-12
	T	R	
	T	R	
	T	R	
2. Property Controlling in Section	S	T	R
	S	T	R
3. Miscellaneous Property in Sec.	S	T	R
	S	T	R

STATE OF MICHIGAN
COUNTY OF KENT
RECEIVED FOR RECORD
98 MAR -5 AM 8:32
REG. OF DEEDS
Eric Bond

10516

Register of Deeds Stamp & File Number

4. Lot No. _____, Recorded Plat _____
5. Private Claims _____

I, Kirk Breitel, in a field survey on Jan. 2, 19 98 do hereby state that under requirements of P.A. 74, Michigan P.A. of 1970, the corner points mentioned in lines 1 and 2 above were in conformance with regulations and rules therefore as required in the current manual of survey instructions of the United States Department of the Interior, Bureau of Land Management or by a decree of a Court of Law and for that the corner points mentioned in lines 3, 4 and 5 above were in conformance with the rules of the Michigan Board of Land Surveyors or by a Decree of a Court of Law; established, re-established, monumented, recovered, found as expressed below:

A	B	C	D	E	F	G	H	I	J	K	L	M
1												
2	6	5	4	3	2	1						
3												
4	7	8	9	10	11	12						
5												
6	10	17	16	15	14	13						
7												
8	19	20	21	22	23	24						
9												
10	30	29	28	27	26	25						
11												
12	31	32	33	34	35	36						
13												

NOTE: Not more than 2 corners, all in the same town and range, may be recorded on this certificate.

A. Description of original monument and accessories and/or subsequent restoration:

C-12	1837	GLO	Whitcomb	Set Post
	1970	Kent Co. Wits		1" Iron
	1973	LCRC #462	Spicer	Conc. Nail over 1" Iron
	1981	LCRC #2459	Jonker	Set Kent County Monument
	1990	LCRC #5650	Marschall	Kent Co. Mon.

P.A. 345 1990 KENT COUNTY
PEER APPROVED 2/19/98
CHAIRMAN *Harry Huber*

The position of this corner was previously approved by the Kent County Remonumentation Peer Group, monumented by Robert J. Jonker on 11-20-81 and was recorded per LCRC #2459.

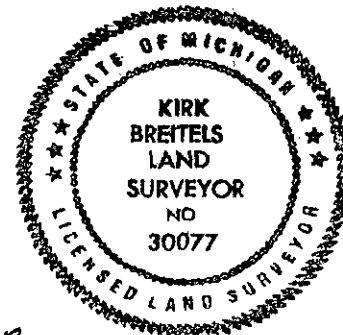
B. Description of corner evidence found and/or method applied in restoring or reestablishing corner:

C-12 Found Kent County Monument (Harrison) per witnesses from above LCRC as set by Robert J. Jonker in place of the Conc. Nail over a 1" Iron he found. Said Nail over Iron checks with Kent Co. Wits. and LCRC #2459												
LCRC #2459				LCRC #5650								
"V" cut SE cor. wing-wall	West	12.35'	"V" cut SE cor. wing-wall	West	12.35'							
"V" cut SW cor. wing-wall	East	12.33'	"V" cut SW cor. wing-wall	East	12.33'							
Nail & Remon. tag dbl. 9" Ash	S48°E	61.06'	Nail & Remon. tag Tw. 12"-8" Ash	S48°E	61.06'							
Nail & Remon. tag Maple clump	S37°W	46.25'	Nail & Remon. tag Maple clump	S37°W	46.17'							
South edge bridge deck	North	8.4'	South edge of bridge deck	North	8.4'							

The selected location is accepted by me and is generally accepted by professional surveyors as the best available evidence of the position of the original corner.

C. Description of monument for corner and accessories established to perpetuate locating the position of the corner:

C-12 Standard Kent County Monument												
"V" cut SE corner wing wall	West	12.35'										
"V" cut SW corner wing wall	East	12.33'										
Nail & KC Remon. tag SW side Twin 12"-8" Ash	S48°E	61.17'										
Nail & KC Remon. tag NW side Maple clump	S37°W	46.13'										
South edge bridge deck	North	8.4'										



Signed by *Kirk Breitel*
Surveyor's Michigan License No. 30077

Date 2/19/98