

\$7.00
\$2.00

MAR 08 1999

KENT COUNTY REMONUMENTATION

SECTION

LAND CORNER RECORDATION CERTIFICATE
Filing Requirement of Act 74, Mich. P.A. 1970

For corners in

KENT COUNTY
(County)

Located in:

Corner Code #

- | | | |
|------------------------------------|----------------------------|-------|
| 1. Public Land Survey | T <u>9</u> N R <u>11</u> W | E-1 |
| | T ___ R ___ | _____ |
| | T ___ R ___ | _____ |
| | T ___ R ___ | _____ |
| 2. Property Controlling in Section | S ___ T ___ R ___ | _____ |
| | S ___ T ___ R ___ | _____ |
| 3. Miscellaneous Property in Sec. | S ___ T ___ R ___ | _____ |
| | S ___ T ___ R ___ | _____ |

STATE OF MICHIGAN
COUNTY OF KENT
RECEIVED FOR RECORD
98 MAR -5 AM 8:32
REG. OF DEEDS
W. J. ...

10520
Register of Deeds Stamp & File Number

4. Lot No. _____, Recorded Plat _____
5. Private Claims _____

I, Kirk Breitels, in a field survey on Jan. 7, 19 98 do hereby state that under requirements of P.A. 74, Michigan P.A. of 1970, the corner points mentioned in lines 1 and 2 above were in conformance with regulations and rules therefore as required in the current manual of survey instructions of the United States Department of the Interior, Bureau of Land Management or by a decree of a Court of Law and /or that the corner points mentioned in lines 3, 4 and 5 above were in conformance with the rules of the Michigan Board of Land Surveyors or by a Decree of a Court of Law; established, re-established, monumented, recovered, found as expressed below:

NOTE: Not more than 2 corners, all in the same town and range, may be recorded on this certificate.

	A	B	C	D	E	F	G	H	I	J	K	L	M
1													
2	6		5		4		3		2		1		
3													
4	7		8		9		10		11		12		
5													
6	18		17		16		15		14		13		
7													
8	19		20		21		22		23		24		
9													
10	30		29		28		27		26		25		
11													
12	31		32		33		34		35		36		
13													

A. Description of original monument and accessories and/or subsequent restoration:

- | | | | | |
|-----|------|---------------------|---|---|
| E-1 | 1837 | GLO | Whitcomb | Set Post 392 links (258.72') W. of E-13, T10N, T11W |
| | 1887 | Williams & Works | Found old stake - set new stake | |
| | 1939 | Kent Co. Wits | Concrete Monument | |
| | 1968 | Consumers Power Co. | Concrete Monument | |
| | 1970 | Williams & Works | Iron 258.7' W. of E-13, T10N, R11W 4.8' S. of twp. line | |
| | 1979 | LCRC #1279 | Hackbardt | Concrete Monument |
| | 1996 | LCRC #9590 | Breitels | Set Kent County Monument |

P.A. 345 1990 KENT COUNTY
PEER APPROVED 2/19/98
CHAIRMAN *Harry ...*

The position of this corner was previously approved by the Kent County Remonumentation Peer Group, monumented by Kirk Breitels on 12-12-96 and was recorded per LCRC #9590.

B. Description of corner evidence found and/or method applied in restoring or reestablishing corner:

E-1 Found Kent County Monument (Harrison) per witnesses from above LCRC as set by Kirk Breitels on the Township line 258.72' West of E-13, T10N, R11W (Kent Co. Mon.). Concrete Mon. per above is 4.96' S. of twp. line.
LCRC #9590

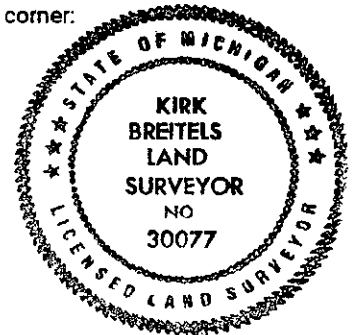
- | | |
|--|---------------|
| Nail & KC Remon. tag SE side P. Pole | N60°E 56.60' |
| Nail & KC Remon. tag N. side 36" Oak | S75°E 106.28' |
| Nail & KC Remon. tag W. side Tw. 18" Oak | S20°E 74.46' |
| Nail & KC Remon. tag E. side 30" Oak | S35°W 36.96' |
| Nail & KC Remon. tag E. side 18" Maple | N35°W 20.33' |

Concrete Mon. - South 4.96' Kent Co. Mon. (E-13, T10N, R11W) - East 258.72'

The selected location is accepted by me and is generally accepted by professional surveyors as the best available evidence of the position of the original corner.

C. Description of monument for corner and accessories established to perpetuate locating the position of the corner:

- E-1 Standard Kent County Monument
- | | |
|--|---------------|
| Nail & KC Remon. tag SE side P. Pole | N60°E 56.65' |
| Nail & KC Remon. tag N. side 36" Oka | S75°E 106.28' |
| Nail & KC Remon. tag W. side Tw. 18" Oak | S20°E 74.46' |
| Nail & KC Remon. tag E. side 30" Oak | S35°W 36.96' |
| Nail & KC Remon. tag E. side 18" Maple | N35°W 20.37' |
- Concrete Monument - South 4.96'
Kent Co. Mon. (E-13, T10N, R11W) - East 258.72'



Signed by *Kirk Breitels*
Surveyor's Michigan License No. 30077

Date 2/19/98