

**SURVEY & REMONUMENTATION**

\$7.00  
\$2.00

MAR 08 1999

SECTION

**KENT COUNTY REMONUMENTATION**

**LAND CORNER RECORDATION CERTIFICATE**  
Filing Requirement of Act 74, Mich. P.A. 1970

REG. OF DEEDS

98 MAY 21 AM 8:31

STATE OF MICHIGAN  
COUNTY OF KENT  
RECEIVED FOR RECORD

For corners in

KENT COUNTY  
(County)

Located In: Corner Code #

1. Public Land Survey

T 9N R 11W  
T \_\_\_\_\_ R \_\_\_\_\_  
T \_\_\_\_\_ R \_\_\_\_\_  
T \_\_\_\_\_ R \_\_\_\_\_

E-3

2. Property Controlling in Section

S \_\_\_\_\_ T \_\_\_\_\_ R \_\_\_\_\_  
S \_\_\_\_\_ T \_\_\_\_\_ R \_\_\_\_\_  
S \_\_\_\_\_ T \_\_\_\_\_ R \_\_\_\_\_  
S \_\_\_\_\_ T \_\_\_\_\_ R \_\_\_\_\_

3. Miscellaneous Property in Sec.

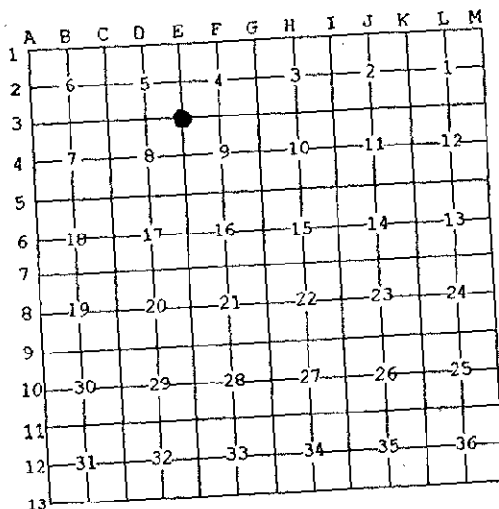
4. Lot No. \_\_\_\_\_, Recorded Plat \_\_\_\_\_  
5. Private Claims \_\_\_\_\_

10604

Register of Deeds Stamp & File Number

I, Kirk Breitels, in a field survey on April 22, 1998 do hereby state that under requirements of P.A. 74, Michigan P.A. of 1970, the corner points mentioned in lines 1 and 2 above were in conformance with regulations and rules therefore as required in the current manual of survey instructions of the United States Department of the Interior, Bureau of Land Management or by a decree of a Court of Law and/or that the corner points mentioned in lines 3, 4 and 5 above were in conformance with the rules of the Michigan Board of Land Surveyors or by a Decree of a Court of Law, established, re-established, monumented, recovered, found as expressed below:

NOTE: Not more than 2 corners, all in the same town and range, may be recorded on this certificate.



**A. Description of original monument and accessories and/or subsequent restoration:**

E-3	1837 GLO	Whitcomb	Set Post
	1977 Survey	VanKooten	Iron
	1983 LCRC #3550	Glaza	Iron
	1984 LCRC #3788	Byl	Set Kent County Monument
	1990 LCRC #5661	Marschall	Kent County Monument

P.A. 345 1990 KENT COUNTY

PEER APPROVED 4/30/98

CHAIRMAN Harry Fisher

The position of this corner was previously approved by the Kent County Remonumentation Peer Group, monumented by William R. Byl on 3-28-84 and was recorded per LCRC #3788.

**B. Description of corner evidence found and/or method applied in restoring or reestablishing corner:**

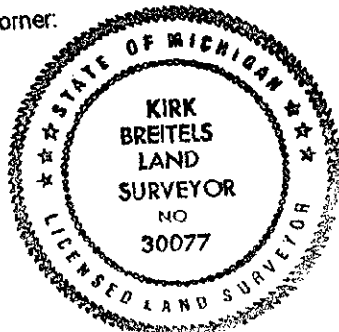
E-3 Found **BROKEN** Kent County Monument (Harrison) per witnesses from above LCRC as set by William R. Byl in place of the Iron Rod he found. Said Iron Rod checks with VanKooten information and LCRC #3550. Removed & Replaced Kent Co. Monument.

LCRC #3788		LCRC #5661	
SE cor. garage siding	N60°W 185.05'	Nail & Remon. tag P. Pole	S48°W 31.30'
NW corner barn find.	S45°W 158.25'	Nail & Remon. tag P. Pole	S69°E 59.01'
Nail & Remon. tag P. Pole	S15°W 131.15'	Nail & Remon. tag 8" Oak	N89°W 58.21'
Nail & Remon. tag P. Pole	S70°E 58.88'	SE corner garage siding	N64°W 184.85'
Nail & Remon. tag		NE corner house foundation	S60°E 228.85'

The selected location is accepted by me and is generally accepted by professional surveyors as the best available evidence of the position of the original corner.

**C. Description of monument for corner and accessories established to perpetuate locating the position of the corner:**

E-3 Standard Kent County Monument	
Nail & KC Remon. tag E. side P. Pole	N15°W 209.24'
Nail & KC Remon. tag SE side P. Pole	S48°W 31.30'
Nail & KC Remon. tag NE side P. Pole	S69°E 58.91'
Nail & KC Remon. tag S. side 12" Oak	N89°W 58.28'
SE corner garage siding	N64°W 184.97'
NE corner house foundation	S60°W 228.90'
C/L gravel road N-S is East 9' ±	
On C/L gravel road to East	



Signed by Kirk Breitels  
Surveyor's Michigan License No. 30077

Date 4/30/98